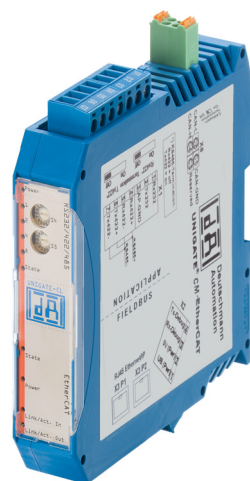




Deutschmann

your ticket to all buses

**Instruction Manual
Universal Fieldbus-Gateway
UNIGATE® CM - EtherCAT**



Deutschmann Automation GmbH & Co. KG
www.deutschmann.com | wiki.deutschmann.de

1	Information on CE marking of the module	8
1.1	EU Directive EMC	8
1.2	Scope of application	8
1.3	Note installation guidelines	8
1.4	Installation of the unit	8
1.5	Working on switch cabinets	8
2	Information for the machine manufacturers	9
2.1	Introduction	9
2.2	EU Machinery Directive	9
3	Introduction	10
3.1	UNIGATE® CM software flow-chart	11
3.2	UNIGATE® CM-application diagram	12
4	Operation modes of the Gateway	13
4.1	Configuration mode (config mode)	13
4.2	Test mode	13
4.3	Data exchange mode	14
5	RS-interface	15
5.1	RS-interfaces at the UNIGATE® CM	15
5.2	Buffer sizes at the UNIGATE® CM	15
5.3	Framing Check	15
6	SSI-interface	16
6.1	Initiation of the SSI-interface	16
6.2	Hardware-wiring	17
7	The Debug-interface	18
7.1	Overview of the Debug-interface	18
7.2	Starting in the Debug-mode	18
7.3	Communication parameter for the Debug-interface	18
7.4	Possibilities with the Debug-interface	18
7.5	Commands of the Debug-interface	18
8	Mode of operation of the system	19
8.1	General explanation	19
8.2	Interfaces	19
8.3	Data exchange	19
8.4	Possible data lengths	19
8.5	Startup phase	19
9	Generating a Script	20
9.1	What is a Script?	20
9.2	Memory efficiency of the programs	20
9.3	What can you do with a Script device?	20
9.4	Independence of buses	20
9.5	Further settings at the Gateway	20
9.6	The use of the Protocol Developer	21
9.7	Accuracies of the baud rates	21
9.8	Script processing times	22

10	Hardware ports, switches and LEDs	23
10.1	Device labeling	23
10.2	Connectors	23
10.2.1	Connector to the external device (RS-interface)	23
10.2.2	Connector supply voltage and DEBUG-interface	24
10.2.3	CANopen interface connector	24
10.2.4	EtherCAT®-connector	24
10.2.5	Power supply	24
10.3	LEDs	25
10.3.1	LED "Bus Power"	25
10.3.2	LED "Link / Act. In"	25
10.3.3	LED "Link / Act. Out"	25
10.3.4	LED "Bus State"	25
10.3.5	LED "Power / State"	26
10.3.6	LEDs 1 / 2 / 4 / 8 (Error No. / Select ID)	27
10.3.7	LED "State"	27
10.3.8	LEDs (Error No. / Select ID)	27
10.4	Switches	27
10.4.1	Termination Rx 422 + Tx 422 (serial interface)	28
10.4.2	Rotary coding switches S4 + S5 (serial interface)	28
10.4.3	CANopen termination	29
10.5	The Debug cable for UNIGATE® CM	29
11	Error handling	30
11.1	Error handling at UNIGATE® CM	30
11.1.1	Error on the CL-extension	31
12	Installation guidelines	32
12.1	Installation of the module	32
12.1.1	Mounting	32
12.1.2	Removal	32
12.2	Wiring	32
12.2.1	Connection systems	32
12.2.2	EtherCAT® communication interface	33
12.2.3	Line routing, shield and measures to combat interference voltage	33
12.2.4	General information on line routing	33
13	Firmware CL-extension with CANopen interface	35
14	Technical data	36
14.1	Device data	36
14.1.1	Interface data	37
15	Commissioning guide	38
15.1	Note	38
15.2	Components	38
15.3	Installation	38
15.4	Dimensional drawing UNIGATE® CM - EtherCAT®	38
15.5	Commissioning	38
15.6	EtherCAT® connection	39
15.7	Setting the CANopen address and baudrate	39

15.8	CANopen connection	39
15.9	Connection to the process device	39
15.10	Shield connection	39
15.11	Connecting the supply voltage	39
15.12	Project planning	39
16	Servicing	40
16.1	Returning a device	40
16.2	Downloading PC software	40
17	Annex	41
17.1	Explanations of the abbreviations	41
17.2	Hexadecimal table	42

Disclaimer of liability

We have checked the contents of the document for conformity with the hardware and software described. Nevertheless, we are unable to preclude the possibility of deviations so that we are unable to assume warranty for full compliance. The information given in the publication is, however, reviewed regularly. Necessary amendments are incorporated in the following editions. We would be pleased to receive any improvement proposals which you may have.

Copyright

Copyright (C) Deutschmann Automation GmbH & Co. KG 1997 – 2017. All rights reserved. This document may not be passed on nor duplicated, nor may its contents be used or disclosed unless expressly permitted. Violations of this clause will necessarily lead to compensation in damages. All rights reserved, in particular rights of granting of patents or registration of utility-model patents.

EtherCAT® is registered trademark and patented technology, licensed by Beckhoff Automation GmbH, Germany.

1 Information on CE marking of the module

1.1 EU Directive EMC

The following applies to the module described in this User Manual:

Products which bear the CE mark comply with the requirements of EU Directive „Electromagnetic Compatibility“ and the harmonized European Standards (EN) listed therein.

The EU Declarations of Conformity are available at the following location for perusal by the responsible authorities in accordance with the EU Directive, Article 10:

Deutschmann Automation GmbH & Co. KG, Carl-Zeiss-Straße 8, 65520 Bad Camberg, Germany.

1.2 Scope of application

The modules are designed for use in the industrial sector and comply with the following requirements.

Scope of application	Requirement applicable to	
	Emitted interference	Interference immunity
Industry	EN 55011, cl. A (2007)	EN 61000-6-2 (2005)

1.3 Note installation guidelines

The module complies with the requirements if you

1. comply with the installation guidelines described in the User Manual when installing and operating the module.
2. also follow the rules below on installation of the equipment and on working on switch cabinets.

1.4 Installation of the unit

Modules must be installed in electrical equipment rooms/areas or in enclosed housings (e.g. switch boxes made of metal or plastic). Moreover, you must earth the unit and the switch box (metal box) or at least the top-hat rail (plastic box) onto which the module has been snapped.

1.5 Working on switch cabinets

In order to protect the modules against static electrical discharge, the personnel must discharge themselves electrostatically before opening switch cabinets or switch boxes.

2 Information for the machine manufacturers

2.1 Introduction

The UNIGATE® module does not constitute a machine as defined by the EU "Machinery" Directive. Consequently, the module does not have a Declaration of Conformity in relation to the EU Machinery Directive.

2.2 EU Machinery Directive

The EU Machinery Directive stipulates the requirements applicable to a machine. The term "machine" is taken to mean a totality of connected parts or fixtures (see also EN 292-1, Paragraph 3.1)

The module is a part of the electrical equipment of the machine and must thus be included by the machine manufacturer in the Declaration of Conformity process.

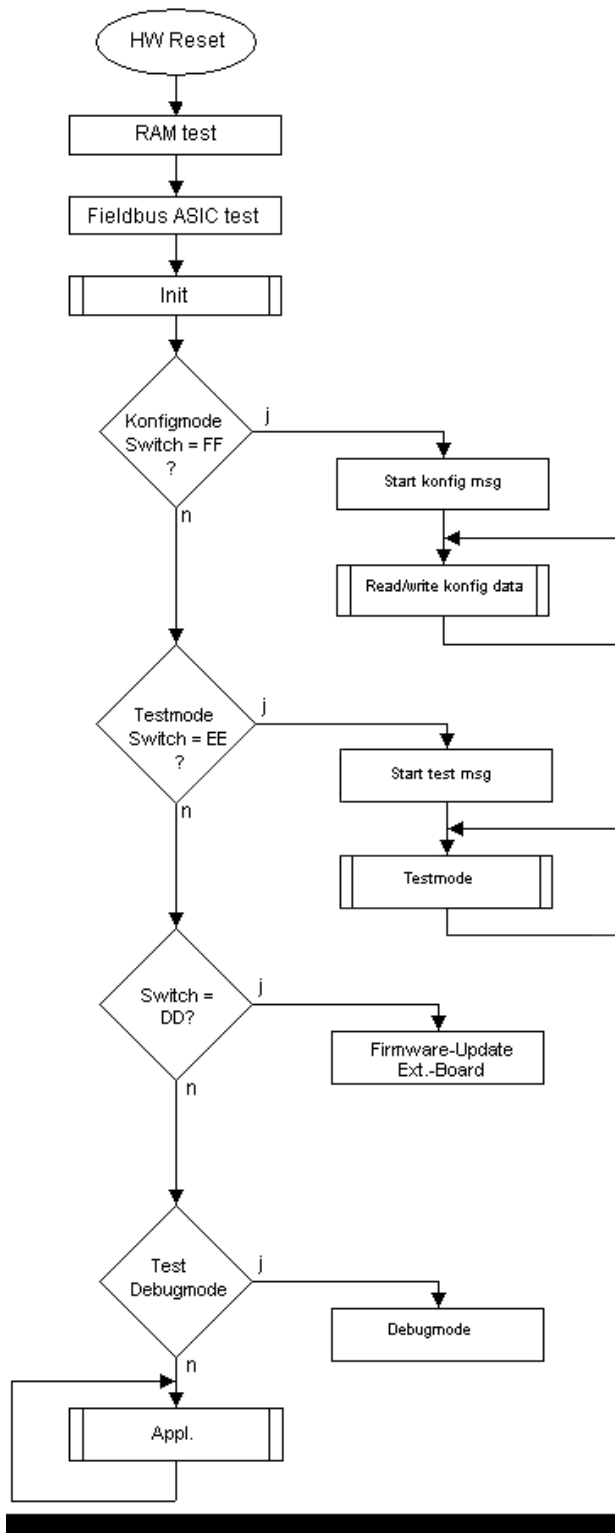
3 Introduction

The UNIGATE® CM-EtherCAT® module serves to adapt a serial port to EtherCAT® networks. The terminal unit's protocol is converted in the UNIGATE® via a Script.

The module CM-EtherCAT® essentially consists of the following hardware components:

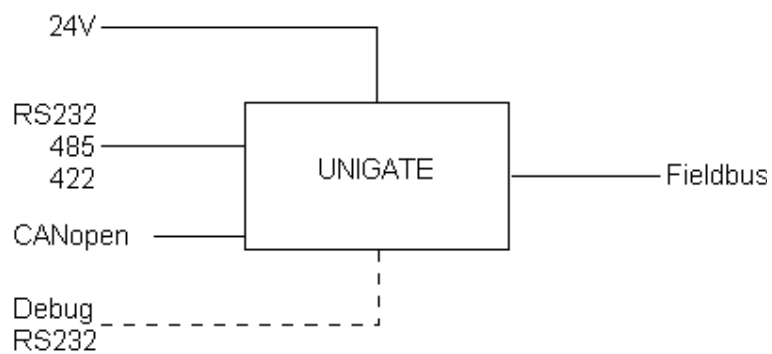
- Electrically isolated EtherCAT®-Interface
- EtherCAT® controller ET1100
- Microprocessor 89C51RD2
- RAM and EEROM
- Serial interface (RS232, RS485 and RS422) to the device connected externally
- CL-extension with additional CANopen interface on the application side

3.1 UNIGATE® CM software flow-chart



3.2 UNIGATE® CM-application diagram

The following graph shows a typical connection scheme.



4 Operation modes of the Gateway

4.1 Configuration mode (config mode)

The configuration mode serves to configure the Gateway. The following adjustments are possible in this mode.

- Loading a Script
- Updating the firmware (only CL- basis)
- Configuring the Gateway

The Gateway will be starting in this mode in case both switches S4 as well as S5 are set on position "F" when switching on the Gateway. Right after switching on the Gateway in the configuration mode it will be sending its starting message, that looks analog with the following message:

```
RS-EC-CL (RS+Ext.Board) V0.1 [30] (c)dA Switch=0xFF Script(8k)="Leer"  
Author="Deutschmann Automation GmbH" Version="1.0" Date=21.08.2001 SN=47110001  
Ext-Board: CL-Erweiterung(CANopen-IO-DICNET) V0.74 (c)dA SN=4294967295  
CAN: ID=1 Baud=500000 LSS-ID=1, LSS-BaudIdx=2
```

In the configuration mode the Gateway always operates with the settings 9600 Bauds, no Parity, 8 Databits and 1 Stopbit, the RS-State LED will always be flashing red, the "Error No/Select ID" LEDs are of no account for the user. All software revisions contain the configuration mode.

4.2 Test mode

Setting of the test mode

The test mode is set by bringing the switches S4 and S5 in position "E". All other switches will not be taken into consideration for the setting of the test mode. Now the Gateway has to be restarted with these settings (by a short disconnection from the power supply).

In the test mode the Gateway always operates with the settings 9600 baud, no parity, 8 databits and 1 stopbit.

The test mode may be helpful to integrate the Gateway in the relevant environment, for instance to test the parameters of the RS-interfaces.

Mode of operation of the test mode

After the restart in the test mode the Gateway will be sending the values 0-15 in hexadecimal representation ("0".."F") in ASCII-coding on the serial side every second. Simultaneously the same values are issued binary on the fieldbus-interface.

In this mode the State-LED on the RS-side will be flashing red, the "Error No/Select ID" LEDs will be displaying the value in a binary way, that is issued that moment. Additionally each character that is received at one of the interfaces will also be output at the same interface as a local echo. On the fieldbus-side only the first byte will be used for the local echo, that means on receiving as well as on transmitting only the first byte of the bus data is looked at, the other bus data do not change compared to the last data.

4 Bytes are output on the CANopen interface:

- 1 byte: Echo of the first received byte via CAN
- 2 byte: Read back byte IO8
3. byte: value of the DIP-switch (currently not used, fixed value is "FF")
4. byte: Output to IO8

4.3 Data exchange mode

The Gateway has to be in the data exchange mode, so that a data exchange between the RS-side of the Gateway and the fieldbus is possible. As long as the Gateway is not in the configuration mode or the test mode, the data exchange mode is active. In the data exchange mode the Gateway will execute the downloaded Script.

5 RS-interface

5.1 RS-interfaces at the UNIGATE® CM

The UNIGATE® CM - EtherCAT® has the interfaces RS232, RS422 and RS485 available. The hardware always features a DEBUG-interface, see chapter 7.

5.2 Buffer sizes at the UNIGATE® CM

UNIGATE® CM features at the serial side a buffer with the size of 1024 bytes for input data and output data each.

The FIFO of the application interface (RS-interface) can be changed in any Gateway form Script revision 26 on, that is capable for Script. For it please check in the Protocol Developer under "Device Control" - "Hardware".

5.3 Framing Check

The length of the stop bit received by the Gateway is checked through the function "Framing Check". Here the stop bit generated by the Gateway is always long enough, so that connected participants can evaluate the stop bit.

Please be aware that the function "Framing Check" becomes effective only in case of 8 data bit and the setting "No parity".

An error is detected and indicated by the Error LEDs in case the stop bit does not show the length 1 bit during the activated check.

The possible setting for this parameter can be controlled by the Script (see online help from Protocol Developer). The presetting for the "Stop Bit Framing Check" is "enabled".

6 SSI-interface

The UNIGATE[®] also supports the connection of applications or products, that communicate via SSI.

6.1 Initiation of the SSI-interface

The required Script (example_SSI), the firmware- (Cust0023) and Protocol Developer-extension (Cust_ssi.xml) are available free of charge from our website at www.deutschmann.com, as well as the softwaretool Protocol Developer and the configuration software WINGATE.

- In the Protocol Developer (see chapter 7, The Debug-interface) the ConfigFile "Cust_ssi.xml" has to be added. At Options -> Settings -> ConfigFiles.
- Load the Script "example_SSI.dss" into the Protocol Developer.
- The encoder type and the clock frequency has to be defined in the Script itself under "Set number of bits" and "Set type and clock stretch value" (default = 12-Bit-Single-Turn-Gray, max. clock stretch):

```
// Set number of bits
// 1..16 = Single Turn
// 17..32 = Multi Turn
moveconst (bNumBits, 12); // i.e. 12 bit single turn
// MT SSI 4096 x 4096 = 16777216 = 0b100000000000000000000000 => 24 bit

//-----
// Set type and clock stretch value
// Type (low nibble):
// 0 = Reserved
// 1 = output value as is (i.e. binary encoder)
// 2 = convert Gray encoded output value to binary (i.e. Gray encoder)
// >2 = Reserved
//
// Clock stretch value (high nibble):
// Please note that the given frequency values are only a rough estimate. The
// exact frequency varies depending on the devices underlying architecture.
// 0 = No Stretch --> ~300 kHz
// 1 = ~185 kHz
// 2 = ~150 kHz
// 3 = ~125 kHz
// 4 = ~110 kHz
// 5 = ~100 kHz
// 6 = ~ 88 kHz
// 7 = ~ 80 kHz
// 8 = ~ 72 kHz
// 9 = ~ 67 kHz
// A = ~ 62 kHz
// B = ~ 58 kHz
// C = ~ 54 kHz
// D = ~ 50 kHz
// E = ~ 48 kHz
// F = ~ 45 kHz
//moveconst ( wTyp, 0x02); // i.e. Gray encoder, no clock stretch (High-Nibble=0)
```

moveconst (wTyp, 0xF2); // i.e. Gray encoder, max clock stretch (High-Nibble=F)

- Load the Script into the device. Open WINGATE and activate the device in the configuration mode (see chapter 4.1, Configuration mode (config mode)) - an actuation message appears, that looks in line with the following (example CL-PB):
Special Firmware (23) not loaded
RS-PBV1-CL (232/422/485) V7.31[30] (c)dA Switch=0x02FF Script(8k)="SSI"
Author="Deutschmann Automation" Version="V 1.0" Date=20.03.2008 SN=47110002 ID=2
Konfigmode...
The note "Special Firmware (23) not loaded" means that the firmware-extension is not yet loaded. The extension is loaded through Extras -> Firmware Script Extension. Select the file "Cust0023 (Cmd 23 + 24 for SSI).hex" and choose "write extension".
- Re-start the device → now only the device's actual actuation message appears and not the note any more.
- Bring the device into the data exchange mode (see chapter 4.3, Data exchange mode) → DONE!

6.2 Hardware-wiring

The clock wires of the SSI-interface are placed onto the Tx-wires of the RS422-interface and the data wires onto the Rx-wires at the UNIGATE® CM.

X1 (3-pin + 4-pin screw-plug-connector):

Pin no.	Name	Function at SSI
1	Rx 232	n. c.
2	Tx 232	n. c.
3	AP-GND	n. c.
4	Rx 422+	SSI DAT+
5	Rx 422-	SSI DAT-
6	Tx 422+	SSI CLK+
7	Tx 422-	SSI CLK-

7 The Debug-interface

7.1 Overview of the Debug-interface

The UNIGATE® CM features a Debug-interface, that allows a step-by-step processing of a Script. Normally this interface is only required for the development of a Script.

7.2 Starting in the Debug-mode

When applying power to the UNIGATE® (power up) the firmware will output the binary character 0 (0x00) after a self-test was carried out on this interface. If the UNIGATE® receives an acknowledgement via this interface within 500 ms, it is in the Debug-mode. The acknowledgement is the ASCII-character O (0x4F).

With the start in the Debug-mode the further execution of Script commands will be put to a stop.

7.3 Communication parameter for the Debug-interface

The Debug-interface is always operating with 9600 baud, no parity, 8 data bit, 1 stop bit. It is not possible to change this parameter in the Protocol Developer. Please consider the fact that these settings have to be in accordance with those of the PC-COM-interface and that the flow control (protocol) has to be set on „none“ there.

7.4 Possibilities with the Debug-interface

Usually the Protocol Developer is connected to the Debug-interface. With it a step-by-step processing of a Script, monitoring jumps and decisions and looking at memory areas is possible. Moreover breakpoints can be set. It basically possesses all characteristics a software-development tool is typically supposed to have. However, it is also possible to carry out a Scrip-update via this interface.

From Script version [27] on you can also output data with the Script command "SerialOutputToDebugInterface". Please also pay attention to the remark in the manual 'Protocol Developer'.

7.5 Commands of the Debug-interface

The commands for the use of the Debug-interface are described in the instruction manual Protocol Developer.

8 Mode of operation of the system

8.1 General explanation

Communication can be split into seven layers, Layer 1 to Layer 7, in accordance with the ISO/OSI model.

The Deutschmann Automation Gateways convert Layers 1 and 2 of the customized bus system (RS485 / RS232 / RS422) to the corresponding Fieldbus system. Layers 3 to 6 are empty. Layer 7 is converted in accordance with chapter 8.3.

8.2 Interfaces

The Gateway features the RS232-, RS422- and RS485-interfaces.

8.3 Data exchange

All data is transferred by the Gateway in dependence of the downloaded Script.

8.4 Possible data lengths

The table below shows the maximum transferable data:

input data	max. 1024 byte	variable: here maximum value
output data	max. 1024 byte	variable: here maximum value

8.5 Startup phase

The Master sets up a connection to the Gateway during the startup phase. Only after a correct termination of the startup phase the data exchange with external devices will take place.

9 Generating a Script



Note: All commands relating to the extension do not work in the debug mode!

9.1 What is a Script?

A Script is a sequence of commands, that are executed in that exact order. Because of the fact that also mechanisms are given that control the program flow in the Script it is also possible to assemble more complex processes from these simple commands.

The Script is memory-oriented. It means that all variables always refer to one memory area. While developing a Script you do not have to take care of the memory management though. The Protocol Developer takes on this responsibility for you.

9.2 Memory efficiency of the programs

A Script command can carry out e. g. a complex checksum like a CRC-16 calculation via data. For the coding of this command only 9 byte are required as memory space (for the command itself). This is only possible when these complex commands are contained in a library.

A further advantage of this library is, that the underlying functions have been in practical use for a couple of years and therefore can be described as 'void of errors'. As these commands are also present in the native code for the controller, at this point also the runtime performance of the Script is favorable.

9.3 What can you do with a Script device?

Our Script devices are in the position to process a lot of commands. In this case a command is always a small firmly outlined task. All commands can be put into classes or groups. A group of commands deals with the communication in general. This group's commands enable the Gateway to send and receive data on the serial side as well as on the bus-side.

9.4 Independence of buses

Basically the Scripts do not depend on the bus, they are supposed to operate on. It means that a Script which was developed on a PROFIBUS Gateway can also be operated on an Interbus without changes, since the functioning of these buses is very similar. In order to also process this Script on an Ethernet Gateway, perhaps further adjustments have to be made in the Script, so that the Script can be executed reasonably.

There are no fixed rules how which Scripts have to operate properly. When writing a Script you should take into account on which target hardware the Script is to be executed, so the necessary settings for the respective buses can be made.

9.5 Further settings at the Gateway

Most devices require no further adjustments, except for those made in the Script itself. However, there are also exceptions to it. These settings are made by means of the software WINGATE. If you know our UNIGATE®-series, you are already familiar with the proceeding with it. An example is the adjustment of the IP-address and the net-mask of an Ethernet-Gateway. These values have to be known as fixed values and are not available for the runtime. Another reason for the

configuration of the values in WINGATE is the following: After an update of the Script these values

remain untouched, i. e. the settings that were made once are still available after a change of the Script.

Only this way it is also possible that the same Script operates on different Ethernet-Gateways, that feature different IP-addresses.

9.6 The use of the Protocol Developer

The software tool Protocol Developer can be downloaded from our website <http://www.deutschmann.de>

It is a tool for an easy generation of a Script for our Script Gateways. Its operation is exactly aimed at this use. After starting the program the Script that was loaded the last time is loaded again, provided that it is not the first start.

Typical for Windows Script commands can be added by means of the mouse or the keyboard. As far as defined and required for the corresponding command, the dialog to the corresponding command is displayed, and after entering the values the right text is automatically added to the Script. The insertion of new commands by the Protocol Developer is carried out in a way that existing commands will not be overwritten. Generally a new command is inserted in front of the one where the cursor is positioned. Of course the commands can also be written by means of the keyboard or already written commands can also be modified.

9.7 Accuracies of the baud rates

The baud rate of the serial interface is derived from the processor's crystal frequency.

Meanwhile all Script-Gateways are working with a crystal frequency of 40 MHz.

You can enter any desired integer baud rate into the Script. After that the firmware adjusts the baud rate, that can be derived the most precisely from the crystal frequency.

The baud rate the Gateway is actually working with (BaudIst) can be determined as follows:

$$\begin{aligned}\text{BaudIst} &= (\text{F32} / \text{K}) \\ \text{F32} &= \text{Crystal frequency [Hz]} / 32 \\ \text{K} &= \text{Round}(\text{F32} / \text{BaudSoll}); \\ &\quad \text{Round}() \text{ is a commercial roundoff}\end{aligned}$$

Example:

The actual baud rate is to be calculated, when 9600 baud are pre-set, where the Gateway is operated with 40 MHz:

$$\begin{aligned}\text{F32} &= 40000000 / 32 = 1250000 \\ \text{K} &= \text{Round}(1250000 / 9600) = \text{Round}(130.208) = 130 \\ \text{BaudIst} &= 1250000 / 130 = 9615.38\end{aligned}$$

I. e.: The baud rate actually adjusted by the Gateway is 9615.38 baud

The resulting error in per cent can be calculated as follows:

$$\text{Error}[\%] = (\text{abs}(\text{BaudIst} - \text{BaudSoll}) / \text{BaudSoll}) * 100$$

In our example the following error results:

$$\text{Error} = (\text{abs}(9615.38 - 9600) / 9600) * 100 = 0.16\%$$

In practise errors below 2% can be tolerated!

In the following please find a listing of baud rates at a 40 MHz-crystal frequency with the corresponding errors:

4800 baud:	0.16%
9600 baud:	0.16%
19200 baud:	0.16%
38400 baud:	1.35%
57600 baud:	1.35%
62500 baud:	0%
115200 baud:	1.35%
312500 baud:	0%
625000 baud:	0%

9.8 Script processing times

The Script is translated by the Protocol Developer and the consequently generated code is loaded into the Gateway. Now the processor in the Gateway interprets this code. In this case, there are commands that can be processed very fast (e. g. "Set Parameter"). There are also commands, however, that take longer (e. g. copying 1000 bytes). Consequently, for one thing the processing time differs due to the kind of Script command. But the processing time of the Script commands is considerably more determined by the processor time that is available for this process. Since the processor has to carry out several tasks simultaneously (multitasking system) only a part of the processor's capacity is available for the Script processing. The following tasks - in the order of priority - are executed on the processor:

- Sending and receiving data at the Debug-interface (provided that the Protocol Developer has been started on the PC)
- Sending and receiving data at the RS-interface
- Sending and receiving data at the Fieldbus-interface
- Tasks controlled via internal clock (1 ms) (e. g. flashing of an LED)
- Processing of the Script

From experience approximately 0.5 ms can be calculated for each Script line. This value confirmed itself again and again in many projects as a standard value. He is always quite right if the processor has enough time available for the Script processing.

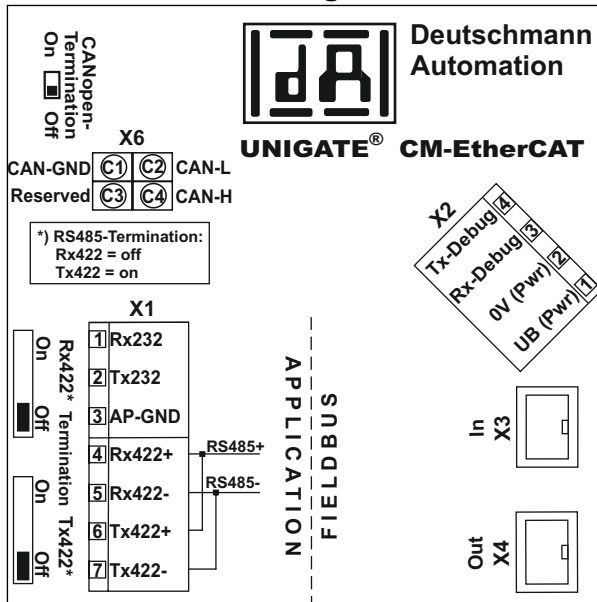
By means of the tasks mentioned above, the following recommendation can be formulated in order to receive a rather fast Script processing:

- Deactivate the Debug-interface (it is the normal case in the serial use)
- Keep the data length at the RS-interface as small as possible. The baud rate is not the problem here, but the amount of characters which are transferred per second.
- Do not unnecessarily extend the data length at the Fieldbus side. Especially at acyclic bus data, if possible do only send them when changes were made. The data length at buses that are configured to a fixed length (e. g. PROFIBUS) should not be longer than absolutely necessary.

If the processing time should be too large in spite of these measures, there is the possibility to generate a customized Script command, that executes several tasks in one Script command.

10 Hardware ports, switches and LEDs

10.1 Device labeling



Picture 1: Terminal labeling and termination



Picture 2: Front panel: Rotary switches and LEDs

10.2 Connectors

10.2.1 Connector to the external device (RS-interface)

The serial interface is available at the plug accessible on the upper side of the device.
Pin assignment X1 (3-pole and 4-pole screw-type plug connector)

Pin No.	Name	Function
1	Rx 232	Receive signal
2	Tx 232	Transmit signal
3	AP-GND	Application Ground
4	Rx 422+ (485+)	Receive signal
5	Rx 422- (485-)	Receive signal
6	Tx 422+ (485+)	Transmit signal
7	Tx 422- (485-)	Transmit signal



For the operation at a 485-interface the two pins labeled "485-" have to be connected together.
Also the two pins "485+".

10.2.2 Connector supply voltage and DEBUG-interface

Pin assignment X2 (4-pole screw-plug connector, on the bottom side, at the back)

Pin No.	Name	Function
1	UB (Pwr)	10..33 V supply voltage / DC
2	0 V (Pwr)	0 V supply voltage / DC
3	Rx-Debug	Receive signal Debug
4	Tx-Debug	Transmit signal Debug



Attention:

The 0V (Pwr)-signal can be used as reference (Ground) for the Debug interface.

10.2.3 CANopen interface connector

The accessible plug at the top (rear) is the CANopen interface.

Pin assignment X6 (4 pole connector)

Pin No.	Name	Function
C1	CAN-GND	CAN Ground
C2	CAN-L	Dominant Low
C3	Reserved	Reserved - please do not wire
C4	CAN-H	Dominant High

10.2.4 EtherCAT® -connector

The plugs (labeled: In and Out) for the connection to the EtherCAT® net are located on the bottom side of the device.

Pin assignment X3 + X4 (2 x RJ45)

Pin No.	Name	Function
1	TD+	Transmission line +
2	TD-	Transmission line -
3	RD+	Receive line +
4		
5		
6	RD-	Receive line -
7		
8		

10.2.5 Power supply

The device must be powered with 10-33 VDC, The voltage supply is made through the 4-pole screw-plug connector at the device's bottom side.

Please note that the devices of the series UNIGATE® should not be operated with AC voltage.

10.3 LEDs

The Gateway UNIGATE® CM - EtherCAT® features 10 LEDs with the following significance:

LED Bus Power	green	Supply voltage EtherCAT®
LED Link / Act. In	green	Ethernet-link pulses found / network data traffic In
LED Link / Act. Out	green	Ethernet-link pulses found / network data traffic Out
LED Bus State	red/green	Interface-state EtherCAT®
LED Power / State	red/green	Interface condition CANopen
LED State	red/green	User-defined / general Gateway error
LED 1 / 2 / 4 / 8 (Error No. / Select ID)	green	User-defined / general Gateway error

10.3.1 LED "Bus Power"

This LED is connected directly to the EtherCAT® supply voltage.

10.3.2 LED "Link / Act. In"

This LED is directly controlled by the EtherCAT® controller and shines when the Gateway is located at the RJ45 (In) at a working net (link pulses are received) and flickers during network data traffic (Activity).

10.3.3 LED "Link / Act. Out"

This LED is directly controlled by the EtherCAT® -processor and shines when the Gateway is located at the RJ45 (Out) at a working net (link pulses are received) and flickers during network data traffic (Activity).

10.3.4 LED "Bus State"

ERR State (rt)	Error	Description
Off	No error	The EtherCAT® communication of the device is in working condition
Blinking	Invalid configuration	General Configuration Error (example: Wrong Object Settings)
Single Flash	Unsolicited State Change	Slave device application has changed the EtherCAT® state autonomously: Parameter "Change" in the AL status register is set to 0x01: change/error
Double Flash	Application Watchdog Timeout	An application watchdog timeout has occurred. (example: 10ms IR Error)

RUN State (gn)	Status	Description
Off	INIT	The device is in state INIT
Blinking	PRE-OPERATIONAL	The device is in state PRE-OPERATIONAL
Single Flash	SAFE-OPERATIONAL	The device is in state SAFE-OPERATIONAL
On	OPERATIONAL	The device is in state OPERATIONAL

Indicator State	Definition
On	The indicator shall be constantly on.
Off	The indicator shall be constantly off.
Blinking	The indicator shall turn on and off iso-phase with a frequency of 2.5 Hz: on for 200 ms followed by off for 200 ms
Single Flash	The indicator shall show one short flash (200 ms) followed by a long phase off (1000 ms).
Double Flash	The indicator shall show a sequence of two short flashes (200 ms), separated by an off phase (200 ms). The sequence is finished by a long off phase (1000 ms).

10.3.5 LED "Power / State"

The Power/State LED signals the status and operating condition of the CANopen interface and can have the following conditions in the data exchange mode:

Indicator states and flash rates

The following Indicator states are distinguished:

LED on	constantly on
LED off	constantly off
LED	flickering iso-phase on and off with a frequency of approximately 10 Hz: on for approximately 50 ms and off for approximately 50 ms.
LED blinking	iso-phase on and off with a frequency of approximately 2,5 Hz: on for approximately 200 ms followed by off for approximately 200 ms.
LED single flash	one short flash (approximately 200ms) followed by a long off phase (approximately 1000 ms).
LED double flash	a sequence of two short flashes (approximately 200ms), separated by an off phase (approximately 200ms). The sequence is finished by a long off phase
LED triple flash	(approximately 1000 ms). a sequence of three short flashes (approximately 200ms), separated by an off phase (approximately 200ms). The sequence is finished by a long off phase (approximately 1000 ms).

If one bicolor Status LED is used instead of two single color LEDs, this LED shall indicate both the physical bus status and the status of the CANopen state machine. This bicolor LED shall be red and green.

CANopen ERROR LED (red)

The CANopen Error LED indicates the status of the CAN physical layer and indicates errors due to missing CAN messages (SYNC, GUARD or HEARTBEAT).

ERROR LED	State	Description
Off	No error	The Device is in working condition.
Single flash	Warning limit reached	At least one of the error counters of the CAN controller has reached or exceeded the warning level (too many error frames).
Flickering	AutoBaud/LSS	Auto Baudrate detection in progress or LSS services in progress (alternately flickering with RUN LED).
Double flash	Error Control Event	A guard event (NMT-Slave or NMT-master) or a heartbeat event (Heartbeat consumer) has occurred.
Triple flash	Sync Error	The SYNC message has not been received within the configured communication cycle period time out (see Object Dictionary Entry 0x1006).
On	Bus Off	The CAN controller is bus off

If at a given time several errors are present, the error with the highest number is indicated (e.g. if NMT Error and Sync Error occur, the SYNC error is indicated).

CANopen RUN LED (green)

The CANopen RUN LED indicates the status of the CANopen network state machine.

CAN RUN LED	State	Description
Flickering	AutoBaud/LSS	Auto Baudrate detection in progress or LSS services in progress (alternately flickering with RUN LED).
Single flash	STOPPED	The device is in STOPPED state.
Blinking	PRE-OPERATIONAL	The device is in the PRE-OPERATIONAL state.
On	OPERATIONAL	The device is in the OPERATIONAL state.

Whilst the device is executing a reset the CANopen RUN LED shall be off.

In case there is a conflict between turning the LED on green versus red, the LED may be turned on red. Apart from this situation, the bicolor status LED shall combine the behavior of the CAN Error LED.

More conditions in Configuration-, Test- or Update-Mode

off	
green/red flashing	UNIGATE® is in test mode
red flashing	UNIGATE® is in configuration mode / error (see error table chapter 13.1.1)
red bright	CL basis stopped, PC connection with CL extension active (Firmware update, see chapter 13)

10.3.6 LEDs 1 / 2 / 4 / 8 (Error No. / Select ID)

If these 4 LEDs flash and LED "State" simultaneously lights red, the error number is displayed in binary notation (conversion table, see Annex) in accordance with the table in chapter "Error handling".

10.3.7 LED "State"

Lights green	Controllable via Script
Flashes green	Controllable via Script
Flashes green/red	Controllable via Script
Lights red	General Gateway error (see LEDs Error No.), controllable via Script
Flashes red	UNIGATE® is in the configuration / test mode, controllable via Script

10.3.8 LEDs (Error No. / Select ID)

If these 4 LEDs flash and LED "State" simultaneously lights red, the error number is displayed in binary notation (conversion table, see Annex) in accordance with the table in chapter "Error handling". Additionally these LEDs are controllable via Script:

10.4 Switches

The Gateway features 5 switches with the following functions:

Termination Rx 422	switchable Rx 422-terminating resistor for the serial interface
Termination Tx 422	switchable Tx 422- or RS485-terminating resistor for the serial interface
Rotary coding switch S4	ID High for serial interface i. e. configmode
Rotary coding switch S5	ID Low for serial interface i. e. configmode
CANopen-Termination	switchable CANopen terminating resistor

10.4.1 Termination Rx 422 + Tx 422 (serial interface)

If the Gateway is operated as the physically first or last device in an RS485-bus or as 422, there must be a bus termination at this Gateway. In order to do this the termination switch is set to position ON. The resistor (150 Ω) integrated in the Gateway is activated. In all other cases, the switch remains in position OFF.

Please refer to the general RS485 literature for further information on the subject of bus terminations.

If the integrated resistor is used, please allow for the fact that this also activates a pull-down resistor (390 Ω) to ground and a pull-up resistor (390 Ω) to VCC.



**At RS48 only the Tx 422-switch must be set to ON.
The Rx 422-switch has to be on OFF.**

10.4.2 Rotary coding switches S4 + S5 (serial interface)

These two switches can be read out through the Script command "Get (RS_Switch, Destination)" and the value can be used for further functions. This value is read in when the Gateway is switched on or always after a Script command has been executed. The switch positions "EE" (testmode) and "FF" (config mode) are reserved.



The switch position "DD" (ie, S4 and S5 in position "D") is reserved for internal purposes, Firmware-Update CL-extension. The Gateway should only be switched into this mode for a Firmware-Update. Otherwise the firmware of the CL-extension will be deleted and there is no access, respectively no function of the extension anymore.

Switch positions

Switch positions S4	Switch positions S5	Function	Description
D	D	Firmware-Update extension	(Description see chapter 13)
E	E	Test mode	(Description see chapter 4.2) Note: This mode can only be terminated by a reboot.
F	F	Config mode	(Description see chapter 4.1) Note: This mode can only be terminated by a reboot.

10.4.3 CANopen termination

If the Gateway is operated as the first or last physical device in the CANopen[®], there must be a bus termination at this Gateway. In order to do this, either a bus terminating resistor must be activated in the connector or the resistor (120 Ω) integrated in the Gateway must be activated. In order to do this, slide the slide switch to position ON. In all other cases, the slide switch must remain in position OFF. Please refer to the general Fieldbus literature for further information on the subject of bus termination.

10.5 The Debug cable for UNIGATE[®] CM

As accessory a pre-configured Debug cable is available. The Debug cable connects the Gateway to Debug and RS.

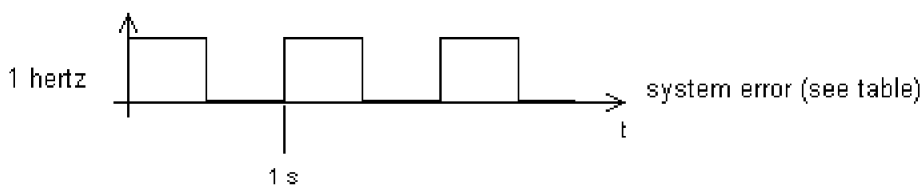
11 Error handling

11.1 Error handling at UNIGATE® CM

If the Gateway detects an error, the error is signalled by the "State" LED lighting red and, simultaneously, the error number being indicated by means of LEDs "Error No." (flashing frequency 1 hertz) as shown in the table below. A distinction can be made between two error categories:

Serious errors (1-4): In this case, the Gateway must be switched off and switched back on again. If the error occurs again, the Gateway must be exchanged and returned for repair.

Warnings (6-15): These warnings are displayed for one minute simply for information purposes and are then automatically reset. If such warnings occur frequently, please inform After-Sales Service.

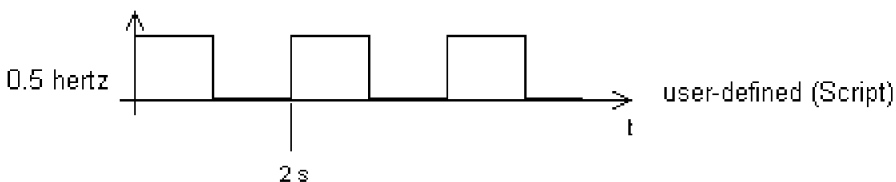


In the configuration mode these displays are not valid and only meant for internal use.

LED8	LED4	LED2	LED1	Error no. resp. ID	Error description
0	0	0	0	0	Reserved
0	0	0	1	1	Hardware fault
0	0	1	0	2	EEROM error
0	0	1	1	3	Internal memory error
0	1	0	0	4	Fieldbus hardware error
0	1	0	1	5	Script error
0	1	1	0	6	Reserved
0	1	1	1	7	RS-transmit buffer overflow
1	0	0	0	8	RS-receive buffer overflow
1	0	0	1	9	Controllable via Script
1	0	1	0	10	General fieldbus error
1	0	1	1	11	Parity-or frame-check-error
1	1	0	0	12	Reserved
1	1	0	1	13	Fieldbus configuration error
1	1	1	0	14	Fieldbus data buffer overflow
1	1	1	1	15	Reserved

Table 1: Error handling at UNIGATE® CM

For user-defined errors the flash frequency is 0.5 hertz. The error is displayed as long as defined by "Set Warning Time".



11.1.1 Error on the CL-extension

An error on the CL-extension will be signaled through red flashing of the Power/State-LED. The LED of the according error number turns off. This is followed by a short, then the flashing sequence is repeated.

Example: With an SRAM-Error 3 the LED lights red, turns off 3 times, lights up again for a moment and everything starts over. The following errors are possible on the CL-extension.

Error Number	Error description
1	HARDWARE_ERROR
2	STACK_ERROR FLASH_INIT_ERR
3	SRAM_ERROR FLASH_ERROR
4	CL_KOMM_ERROR, e.g. CL Firmware doesn't support an extension yet
5	BUS_ID_ERROR FLASH_CHECK_ERR
6	CL_KOMM_RX_ERR
7	CL_KOMM_TX_ERR
8	NSW_DATA_ERROR
9	TIMOUT_ERROR
10	TX_ERROR
11	RX_ERROR
12	ID_ERROR, e.g. double Dicnet-ID, or ID not in net 24V_ERROR, overload (only at Option I/O8)
13	PARA_ERROR
14	BUS_ERROR
15	NSW_PROG_ERROR

12 Installation guidelines

12.1 Installation of the module

The module with the dimensions 23 x 115 x 117 mm (W x D x H) has been developed for switch cabinet use (IP 20) and can thus be mounted only on a standard mounting channel (deep DIN-rail to EN 50022).

12.1.1 Mounting

- Engage the module from the top in the top-hat rail and swivel it down so that the module engages in position.
- Other modules may be rowed up to the left and right of the module.
- There must be at least 5 cm clearance for heat dissipation above and below the module.
- The standard mounting channel must be connected to the equipotential bonding strip of the switch cabinet. The connection wire must feature a cross-section of at least 10 mm².

12.1.2 Removal

- First disconnect the power supply and signal lines.
- Then push the module up and swivel it out of the top-hat rail.

Vertical installation

The standard mounting channel may also be mounted vertically so that the module is mounted turned through 90°.

12.2 Wiring

12.2.1 Connection systems

The following connection systems must resp. may be used when wiring the module:

- Standard screw-type/plug connection (power supply + RS)
- 8-pin RJ45-plug-in connection (EtherCAT® -connection)

a) In the case of standard screw-type terminals, one lead can be clamped per connection point. It is best to then use a screwdriver with a blade width of 3.5 mm to firmly tighten the screw.

Permitted cross-sections of the line:

- Flexible line with wire-end ferrule: 1 x 0.25 ... 1.5 mm²
- Solid conductor: 1 x 0.25 ... 1.5 mm²
- Tightening torque: 0.5 ... 0.8 Nm

b) The plug-in connection terminal strip is a combination of standard screw-type terminal and plug connector. The plug connection section is coded and can thus not be plugged on the wrong way round.

12.2.1.1 Power supply

The device must be powered with 10..33 V DC.

- Connect the supply voltage to the 4-pole plug-in screw terminal in accordance with the labelling on the device.

12.2.1.2 Equipotential bonding connection

The connection to the potential equalization automatically takes place if it is put on the DIN-rail.

12.2.2 EtherCAT® communication interface

This interface is located on the module in the form of two 8-pin RJ45 sockets on the bottom side of the housing.

- Plug the EtherCAT® -connector onto one of the RJ45 sockets labeled "In" (cable from the Master) or "Out" (further cable to the next EtherCAT® Slave).
- Please make sure that the length of the line to the adjacent Ethernet participants does not fall below 0.6 m.

12.2.3 Line routing, shield and measures to combat interference voltage

This chapter deals with line routing in the case of bus, signal and power supply lines, with the aim of ensuring an EMC-compliant design of your system.

12.2.4 General information on line routing

- Inside and outside of cabinets

In order to achieve EMC-compliant routing of the lines, it is advisable to split the lines into the following line groups and to lay these groups separately.

- ⇒ Group A:
 - shielded bus and data lines (e. g. for RS232C and printers etc.)
 - shielded analogue lines
 - unshielded lines for DC voltages ≥ 60 V
 - unshielded lines for AC voltage ≥ 25 V
 - coaxial lines for monitors
- ⇒ Group B:
 - unshielded lines for DC voltages ≥ 60 V and ≥ 400 V
 - unshielded lines for AC voltage ≥ 24 V and ≥ 400 V
- ⇒ Group C:
 - unshielded lines for DC voltages > 400 V

The table below allows you to read off the conditions for laying the line groups on the basis of the combination of the individual groups.

	Group A	Group B	Group C
Group A	1	2	3
Group B	2	1	3
Group C	3	3	1

Table 3: Line laying instructions as a function of the combination of line groups

- 1) Lines may be laid in common bunches or cable ducts.
- 2) Lines must be laid in separate bunches or cable ducts (without minimum clearance).
- 3) Lines must be laid in separate bunches or cable ducts inside cabinets but on separate cable racks with at least 10 cm clearance outside of cabinets but inside buildings.

12.2.4.1 Shielding of lines

Shielding is intended to weaken (attenuate) magnetic, electrical or electromagnetic interference fields.

Interference currents on cable shields are discharged to earth via the shielding bus which is connected conductively to the chassis or housing. A low-impedance connection to the PE wire is particularly important in order to prevent these interference currents themselves becoming an interference source.

Wherever possible, use only lines with braided shield. The coverage density of the shield should exceed 80%. Avoid lines with foil shield since the foil can be damaged very easily as the result of tensile and compressive stress on attachment. The consequence is a reduction in the shielding effect.

In general, you should always connect the shields of cables at both ends. The only way of achieving good interference suppression in the higher frequency band is by connecting the shields at both ends.

The shield may also be connected at one end only in exceptional cases. However, this then achieves only an attenuation of the lower frequencies. Connecting the shield at one end may be more favorable if

- it is not possible to lay an equipotential bonding line
- analogue signals (a few mV resp. mA) are to be transmitted
- foil shields (static shields) are used.

In the case of data lines for serial couplings, always use metallic or metallized plugs and connectors. Attach the shield of the data line to the plug or connector housing.

If there are potential differences between the earthing points, a compensating current may flow via the shield connected at both ends. In this case, you should lay an additional equipotential bonding line.

Please note the following points when shielding:

- Use metal cable clips to secure the shield braiding. The clips must surround the shield over a large area and must have good contact.
- Downstream of the entry point of the line into the cabinet, connect the shield to a shielding bus. Continue the shield as far as the module, but do not connect it again at this point!

13 Firmware CL-extension with CANopen interface

The firmware version is output in the configuration mode (see chapter 4.1). The actual start-up message appears, following the message of the extension that looks similar to the following:

```
Ext-Board: CL-Erweiterung(CANopen-IO-DICNET) V0.74 (c)dA SN=4294967295  
CAN: ID=1 Baud=500000 LSS-ID=1, LSS-BaudIdx=2
```

The switch position "DD" (meaning both, S4 and S5 are both in position "D") serves for the Firmware-Update. This position is transmitted to the CL-extension. The CPU of the CL-module goes mute and the CL-extension is set fixed in the boot mode, which means now a Firmware NEEDS to be loaded into the extension. The Firmware-Update can be started via the Firmware-Download-Tool FDT (Resume Download). The LED "Powe/State" is bright red.

14 Technical data

14.1 Device data

The technical data of the module is given in the table below.

No.	Parameter	Data	Explanations
1	Location	Switch cabinet	DIN-rail mounting
2	Enclosure	IP20	Protection against foreign bodies and water to IEC 529 (DIN 40050)
4	Service life	10 years	
5	Housing size	23 x 115 x 117 mm (screw-plug-connector included) 23 x 115 x 100 mm (screw-plug connector not included)	W x D x H
6	Installation position	Any	
7	Weight	Approx. 160 g	
8	Operating temperature	-25°C ... +85°C	
9	Storage/transport temperature	-40°C ... +85 °C	
10	Atmospheric pressure during operation during transport	795 hPa ... 1080 hPa 660 hPa ... 1080 hPa	
11	Installation altitude	2000 m 4000 m	Unrestricted Restricted - Ambient temperature ≤ 40°C
12	Relative humidity	Max. 80 %	No condensation, no corrosive atmosphere
14	External power supply	10..33 V DC	Standard power supply unit to DIN 19240
15	Current consumption at 24 VDC	Typ. 160 mA max 200 mA	
17	Reverse voltage protection	Yes	But does not function!
18	Short-circuit protection	Yes	
19	Overload protection	Poly-switch	Thermal fuse
20	Undervoltage detection (USP)	≤ 9 V DC	
21	Emergency power supply	≥ 5 ms	Device fully operable

Table: Technical data of the module

14.1.1 Interface data

The table below lists the technical data of the interfaces and ports on the device. The data has been taken from the corresponding Standards.

No.	Interface designation Physical interface	EtherCAT® Ethernet 100 BaseT	RS232-C RS232-C	RS485/RS422 RS485/RS422	CANopen® RS485
1	Standard		DIN 66020	EIA Standard	CiA® DS 102
2	Transmission mode	Symmetrical asynchronous serial full-duplex → Difference sig- nal	Asymmetrical asynchronous serial full-duplex → Level	Symmetrical asynchronous serial half-duplex full-duplex at RS422 → Difference signal	Symmetrical asynchronous serial half-duplex → Difference signal
3	Transmission method	Multimaster CSMA/CD	Master / slave	Master / slave	Master / slave
4	Number of users : - Transmitters - Receivers	65535 65535	1 1	32 32	32 32
5	Cable length: - Maximum - Baud rate-dependent	100 m	15 m no	1200 m <93.75 kBd→1200 m 312 kBd→500 m 625 kBd→250 m	1300 m 50 kBd → 1300 m 100 kBd → 640 m 200 kBd → 310 m 500 kBd → 112 m 1 MBd → 40 m
6	Bus topology	Line-, tree- or star	Point-to-point	Line	Line
7	Data rate: - Maximum - Standard	100 Mbit/s 100 Mbit/s	120 kBit/s 2.4 k/B 4.8 k/B 9.6 kBit/s 19.2 kBit/s 38.4 kBit/s	625 kBaud 2.4 kBit/s 4.8 kBit/s 9.6 kBit/s 19.2 kBit/s 57.6 kB 312.5 kB 625 kB	1Mbit/s 125 kB 250 kB 500 kB 1 MB
8	Transmitter: - Load - Maximum voltage - Signal, unloaded - Signal, loaded	100 Ω	3 ... 7 kΩ ± 25 V ± 15 V ± 5 V	54 Ω - 7 V ... 12 V ± 5 V ± 1.5 V	54 Ω - 7 V ... 12 V ± 5 V ± 1.5 V
9	Receiver: - Input resistance - Maximum input signal - Sensitivity	100 Ω	3 ... 7 Ω ± 15 V ± 3 V	12 Ω - 7 V ... 12 V ± 0.2 V	12 Ω - 7 V ... 12 V ± 0.2 V
10	Transmit range (SPACE): - Voltage level - Logic level		+ 3 ... + 15 V 0	- 0.2 ... + 0.2 V 0	- 0.5 ... + 0.05 V 0
11	Transmit pause (MARK): - Voltage level - Logic level		- 3 ... -15 V 1	+ 1.5 ... +5 V 1	+ 1.5 ... +3 V 1

Table: Technical data of the interfaces at the module

15 Commissioning guide

15.1 Note

Only trained personnel following the safety regulations may commission the UNIGATE®.

15.2 Components

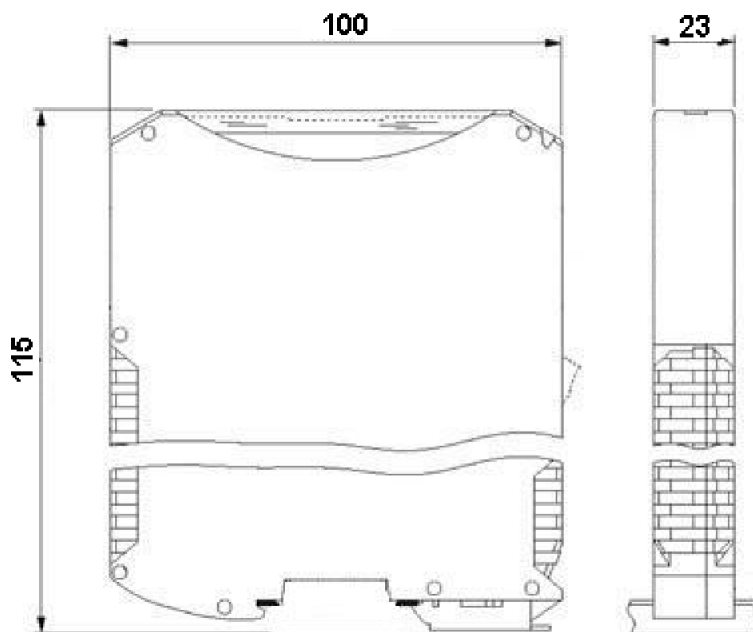
You will require the following components to commission the UNIGATE®

- UNIGATE®
- Connection cable from gateway to the process
- Connection cable for CANopen connector
- Connector for EtherCAT® connection to the Gateway
- Ethernet cable (this cable is generally available on site!)
- 10..33 V DC power supply (DIN 19240)
- Type file or XML file and user manual (a sample XML file as well as the user manual can be ordered separately or downloaded free of charge from our homepage at www.deutschmann.de).

15.3 Installation

The UNIGATE® CM - EC module features protection type IP20 and is thus suitable for switch cabinet use. The device is designed for snapping onto a 35 mm DIN-rail.

15.4 Dimensional drawing UNIGATE® CM - EtherCAT®



15.5 Commissioning

It is essential that you perform the following steps during commissioning in order to ensure that the module operates correctly:

15.6 EtherCAT® connection

Connect the device to the EtherCAT® network at the interface labeled "In" (cable from the Master) or "Out" (further cable to the next Slave).

15.7 Setting the CANopen address and baudrate

The setting of the CANopen-Node-ID and the baudrate is carried out via the script.



Attention:

The CANopen address set must correspond to the planned address!

All users in the CANopen have to use the same Baud rate!

15.8 CANopen connection

Connect the device to the CANopen at the interface X6.

15.9 Connection to the process device

Please also read the manual for the process device when commissioning the process device.

15.10 Shield connection

Earth the DIN rail onto which the module has been snapped.

15.11 Connecting the supply voltage

Please connect 10..33 DC voltage to the terminals provided for this.

15.12 Project planning

Use any project planning tool for project planning.

If the required XML file was not supplied with your project planning tool, a sample file can be found on the Internet (www.deutschmann.com).

16 Servicing

Should questions arise that are not covered in this manual you can find further information in our

- FAQ/Wiki area on our homepage www.deutschmann.com or directly in our Wiki on www.wiki.deutschmann.de

If your questions are still unanswered please contact us directly.

Please note down the following information before calling:

- Device designation
- Serial number (S/N)
- Article number
- Error number and error description

Your request will be recorded in the Support center and will be processed by our Support Team as quickly as possible (Usually in 1 working day, rarely more than 3 working days.).

Technical Support hours are as follows:

Monday to Thursday from 8 am to midday and from 1 pm to 4 pm, Friday from 8 am to midday (CET).

Deutschmann Automation GmbH & Co. KG
Carl-Zeiss-Straße 8
D-65520 Bad-Camberg
Germany

Central office and sales department +49 6434 9433-0
Technical Support +49 6434 9433-33

Fax sales department +49 6434 9433-40
Fax Technical Support +49 6434 9433-44

E-mail Technical Support support@deutschmann.de

16.1 Returning a device

If you return a device, we require as comprehensive a fault/error description as possible. We require the following information in particular:

- What error number was displayed?
- What is the supply voltage (± 0.5 V) with Gateway connected?
- What were you last doing or what last happened on the device (programming, error on power-up, ...)?

The more precise information a fault/error description you provide, the more exactly we will be able to pinpoint the possible causes.

16.2 Downloading PC software

You can download current information and software free of charge from our Internet server.

<http://www.deutschmann.com>

17 Annex

17.1 Explanations of the abbreviations

General

CL	=	Product group CL (Compact Line)
CM	=	Product group CM (CANopen Line)
CX	=	Product group CX
EL	=	Product group EL (Ethernet Line)
FC	=	Product group FC (Fast Connect)
GT	=	Galvanic separation RS-side
GY	=	Housing color gray
MB	=	Product group MB
RS	=	Product group RS
SC	=	Product group SC (Script)
232/485	=	Interface RS232 and RS485 switchable
232/422	=	Interface RS232 and RS422 switchable
DB	=	Additional RS232 DEBUG-interface
D9	=	Connection of the RS through 9-pin D-SUB instead of 5-pin screw-plug connector
PL	=	Board only without DIN-rail module and without housing cover
PD	=	Board only without DIN-rail module and with housing cover
AG	=	Gateway installed in a die-cast aluminum housing
EG	=	Gateway installed in a stainless steel housing
IC	=	Product group IC (IC-design DIL32)
IO8	=	Option I/O8
16	=	Script memory expanded to 16KB
5V	=	Operating voltage 5V
3,3V	=	Operating voltage 3.3V

Fieldbus

ASI	=	AS-Interface (AS-i)
BI	=	BACnet/IP
BMS	=	BACnet MSTB
CO	=	CANopen
C4	=	CANopen V4
C4X	=	CANopen V4-version X (see comparison table UNIGATE® IC for the respective product)
DN	=	DeviceNet
EC	=	EtherCAT
EI	=	Ethernet/IP
FE	=	Ethernet 10/100 MBit
FEX	=	Ethernet 10/100 MBit-version X (see comparison table UNIGATE® IC for the respective product)
IB	=	Interbus
IBL	=	Interbus
LN62	=	LONWorks62
LN512	=	LONWorks512
ModTCP	=	ModbusTCP
MPI	=	Siemens MPI®
PL	=	Powerlink

PN = PROFINET-IO
PBDP = PROFIBUS DP
PBDPL = PROFIBUS DP-version L (see comparison table UNIGATE® IC for the respective product)
PBDPX = PROFIBUS DP-version X (see comparison table UNIGATE® IC for the respective product)
PBDPV0 = PROFIBUS DPV0
PBDPV1 = PROFIBUS DPV1
RS = Serial RS232/485/422

17.2 Hexadecimal table

Hex	Decimal	Binary
0	0	0000
1	1	0001
2	2	0010
3	3	0011
4	4	0100
5	5	0101
6	6	0110
7	7	0111
8	8	1000
9	9	1001
A	10	1010
B	11	1011
C	12	1100
D	13	1101
E	14	1110
F	15	1111

