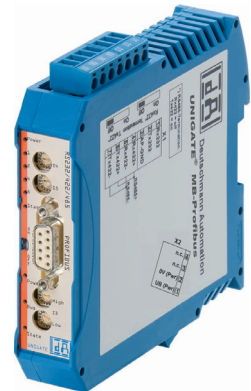




Deuschmann

your ticket to all buses

**Instruction Manual
Universal Fieldbus-Gateway
UNIGATE® MB - PROFIBUS DP**



Deuschmann Automation GmbH & Co. KG
www.deuschmann.com | wiki.deuschmann.de

1	Information on CE marking of the module	8
1.1	EU Directive EMC	8
1.2	Scope of application	8
1.3	Note installation guidelines	8
1.4	Installation of the unit	8
1.5	Working on switch cabinets	8
2	Information for the machine manufacturers	9
2.1	Introduction	9
2.2	EU Machinery Directive	9
3	Introduction	10
3.1	UNIGATE® MB software flow-chart	11
3.2	UNIGATE® block diagram	12
3.3	UNIGATE® application diagram	12
4	Operation modes of the Gateway	13
4.1	Configuration mode (config mode)	13
4.2	Test mode	13
4.3	Data exchange mode	13
5	RS-interface	14
5.1	RS-interfaces at the UNIGATE® MB	14
5.2	Buffer sizes at the UNIGATE® MB	14
5.3	Framing Check	14
6	SSI-interface	15
6.1	Initiation of the SSI-interface	15
6.1.1	Parameter sample frequency (Clock stretch)	15
6.1.2	Parameter Encoder monitoring (Check Encoder)	15
6.2	Hardware-wiring	16
7	Mode of operation of the system	17
7.1	General explanation	17
7.2	Interfaces	17
7.3	Data exchange	17
7.4	Possible data lengths	17
7.5	Startup phase	17
8	Implemented protocols in UNIGATE® MB	18
8.1	Protocol: Transparent	18
8.1.1	Data structure	18
8.2	Protocol: Universal 232	18
8.2.1	Data structure	19
8.2.2	Fieldbus parameters	19
8.2.3	RS232 parameter table	19
8.2.3.1	Start character (232 Start character)	19
8.2.3.2	Length 232 (232 Length)	19
8.2.3.3	Timeout	19
8.2.3.4	End character (232 End character)	19
8.2.4	Communication sequence	20
8.3	Protocol: 3964(R)	20

8.3.1	Data structure 3964R	20
8.3.2	Protocol definitions	20
8.3.3	Data communication	20
8.3.3.1	Initiation of data communication by the low-priority user	20
8.3.3.2	Conflicts	21
8.3.3.3	Timeout times	21
8.3.3.4	Retries	21
8.3.3.5	Initiation of data communication by the high-priority user	21
8.3.4	Protocol type 3964	21
8.4	Protocol: MODBUS-RTU	21
8.4.1	Notes	21
8.4.2	UNIGATE® as MODBUS-Master	21
8.4.2.1	Preparation	21
8.4.2.2	Data structure	22
8.4.2.3	Communication sequence	22
8.4.3	UNIGATE® as MODBUS-Slave	22
8.4.3.1	Preparation	22
8.4.3.2	Data structure	23
8.4.3.3	Communication sequence	23
8.5	Protocol Modbus ASCII Master/Slave	23
8.6	Protocol „Universal Modbus RTU Slave“	23
8.6.1	Data structure on the fieldbus side e.g.: PROFIBUS	23
8.6.1.1	Example: FC1 + FC2	24
8.6.1.2	Example: FC3 (Read Holding Register) + FC4 (Read Input Register)	25
8.6.1.3	Example: Write Single Coil FC5	25
8.6.1.4	Example: Write Single Register FC6	27
8.6.1.5	Example: Force multiple coils FC 15	27
8.6.1.6	Example: Preset multiple register FC16	28
8.7	Protocol „Universal Modbus RTU Master“	29
8.7.1	Data structure Fieldbus side (e.g. PROFIBUS):	29
8.7.2	Data structure Application side:	29
8.7.3	Configuration: via Wingate since wcf Datei Version 396	30
8.7.3.1	Example: Read coil status FC1	31
8.7.3.2	Example: Read input status FC2	32
8.7.3.3	Example: Read multiple register FC3	33
8.7.3.4	Example: Read input registers FC4	34
8.7.3.5	Example: Force single coil FC5	34
8.7.3.6	Example: Preset single register FC6	35
8.7.3.7	Example: Force multiple coils FC15	35
8.7.3.8	Example: Preset multiple register FC16	36
8.8	Protocol „Universal Modbus ASCII Master/Slave“	37
8.9	Protocol: "Ext. Universal Modbus RTU Master"	37
8.10	Protocol SSI	37
8.11	The trigger byte	37
8.12	The length byte	38
8.13	Swap word	38
8.14	Appendix / Configuration examples	39
8.14.1	Example Configuration 1:	39

8.14.2	Configuration with Swap Word	41
8.14.3	Example with Fast Ethernet	43
9	Hardware ports, switches and LEDs	45
9.1	Device labeling	45
9.2	Connectors	45
9.2.1	Connector to the external device (RS-interface)	45
9.2.2	Connector supply voltage	46
9.2.3	PROFIBUS DP-connector	46
9.2.4	Power supply	46
9.3	LEDs	47
9.3.1	LED "Power/State"	47
9.3.2	LEDs 1 / 2 / 4 / 8 (Error No. / Select ID)	47
9.3.3	LED "State"	47
9.3.4	LED "Bus Power"	47
9.3.5	LED "Bus"	47
9.3.6	LED "Bus State"	47
9.4	Switches	47
9.4.1	Termination Rx 422 + Tx 422 (serial interface)	48
9.4.2	Rotary coding switches S4 + S5 (serial interface)	48
9.4.3	Termination (Profibus)	48
9.4.4	Rotary coding switches High + Low (PROFIBUS-ID)	48
10	Error handling	49
10.1	Error handling at UNIGATE® MB	49
11	Installation guidelines	51
11.1	Installation of the module	51
11.1.1	Mounting	51
11.1.2	Removal	51
11.2	Wiring	51
11.2.1	Connection systems	51
11.2.1.1	Power supply	51
11.2.1.2	Equipotential bonding connection	52
11.2.2	PROFIBUS DP communication interface	52
11.2.2.1	Bus line with copper cable	52
11.2.3	Line routing, shield and measures to combat interference voltage	52
11.2.4	General information on line routing	52
11.2.4.1	Shielding of lines	53
12	PROFIBUS DP	54
12.1	Description of the DPV1-/DPV2-functions	54
12.1.1	DPV1	54
12.1.2	DPV2	54
12.2	Representation of the data in PROFIBUS DP	54
12.2.1	Configuration telegram	55
12.2.2	Configuration telegram	55
12.2.3	Diagnosis	55
12.2.3.1	Diagnosis in DPV1	57
12.2.4	Data exchange	58

13	Technical data	59
13.1	Device data	59
13.1.1	Interface data	60
14	Commissioning guide	61
14.1	Note	61
14.2	Components	61
14.3	Installation	61
14.4	Dimensional drawing UNIGATE® MB - PROFIBUS DP	61
14.5	Commissioning	61
14.6	Setting the PROFIBUS address	62
14.7	PROFIBUS connection	63
14.8	Connection to the process device	63
14.9	Connecting the supply voltage	63
14.10	Shield connection	63
14.11	Project planning	63
14.12	Literature	63
15	Servicing	64
15.1	Returning a device	64
15.2	Downloading PC software	64
16	Annex	65
16.1	Explanations of the abbreviations	65
16.2	Hexadecimal table	66

Disclaimer of liability

We have checked the contents of the document for conformity with the hardware and software described. Nevertheless, we are unable to preclude the possibility of deviations so that we are unable to assume warranty for full compliance. The information given in the publication is, however, reviewed regularly. Necessary amendments are incorporated in the following editions. We would be pleased to receive any improvement proposals which you may have.

Copyright

Copyright (C) Deutschmann Automation GmbH & Co. KG 1997 – 2021. All rights reserved. This document may not be passed on nor duplicated, nor may its contents be used or disclosed unless expressly permitted. Violations of this clause will necessarily lead to compensation in damages. All rights reserved, in particular rights of granting of patents or registration of utility-model patents.

1 Information on CE marking of the module

1.1 EU Directive EMC

The following applies to the module described in this User Manual:

Products which bear the CE mark comply with the requirements of EU Directive „Electromagnetic Compatibility“ and the harmonized European Standards (EN) listed therein.

The EU Declarations of Conformity are available at the following location for perusal by the responsible authorities in accordance with the EU Directive, Article 10:

Deutschmann Automation GmbH & Co. KG, Carl-Zeiss-Straße 8, 65520 Bad Camberg, Germany.

1.2 Scope of application

The modules are designed for use in the industrial sector and comply with the following requirements.

Scope of application	Requirement applicable to	
	Emitted interference	Interference immunity
Industry	EN 55011, cl. A (2007)	EN 61000-6-2 (2005)

1.3 Note installation guidelines

The module complies with the requirements if you

1. comply with the installation guidelines described in the User Manual when installing and operating the module.
2. also follow the rules below on installation of the equipment and on working on switch cabinets.

1.4 Installation of the unit

Modules must be installed in electrical equipment rooms/areas or in enclosed housings (e.g. switch boxes made of metal or plastic). Moreover, you must earth the unit and the switch box (metal box) or at least the top-hat rail (plastic box) onto which the module has been snapped.

1.5 Working on switch cabinets

In order to protect the modules against static electrical discharge, the personnel must discharge themselves electrostatically before opening switch cabinets or switch boxes.

2 Information for the machine manufacturers

2.1 Introduction

The UNIGATE® module does not constitute a machine as defined by the EU "Machinery" Directive. Consequently, the module does not have a Declaration of Conformity in relation to the EU Machinery Directive.

2.2 EU Machinery Directive

The EU Machinery Directive stipulates the requirements applicable to a machine. The term "machine" is taken to mean a totality of connected parts or fixtures (see also EN 292-1, Paragraph 3.1)

The module is a part of the electrical equipment of the machine and must thus be included by the machine manufacturer in the Declaration of Conformity process.

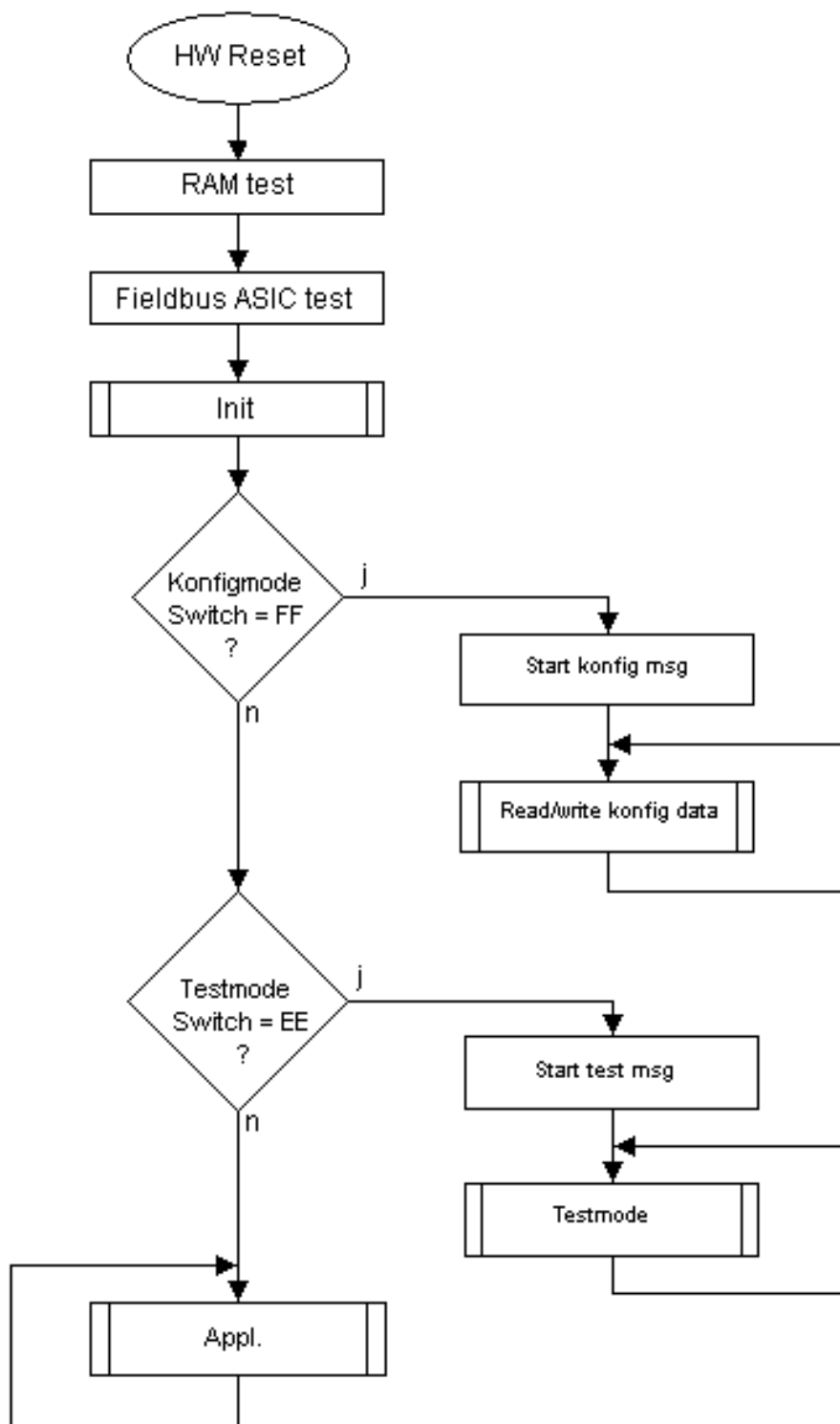
3 Introduction

The UNIGATE® MB-PROFIBUS DP module serves to adapt a serial port to the PROFIBUS DP to EN 50 170. In this application, it functions as a Gateway and operates as the PROFIBUS DP Slave. It can be operated by any standard-compliant Master.

The module MB-PROFIBUS DP essentially consists of the following hardware components:

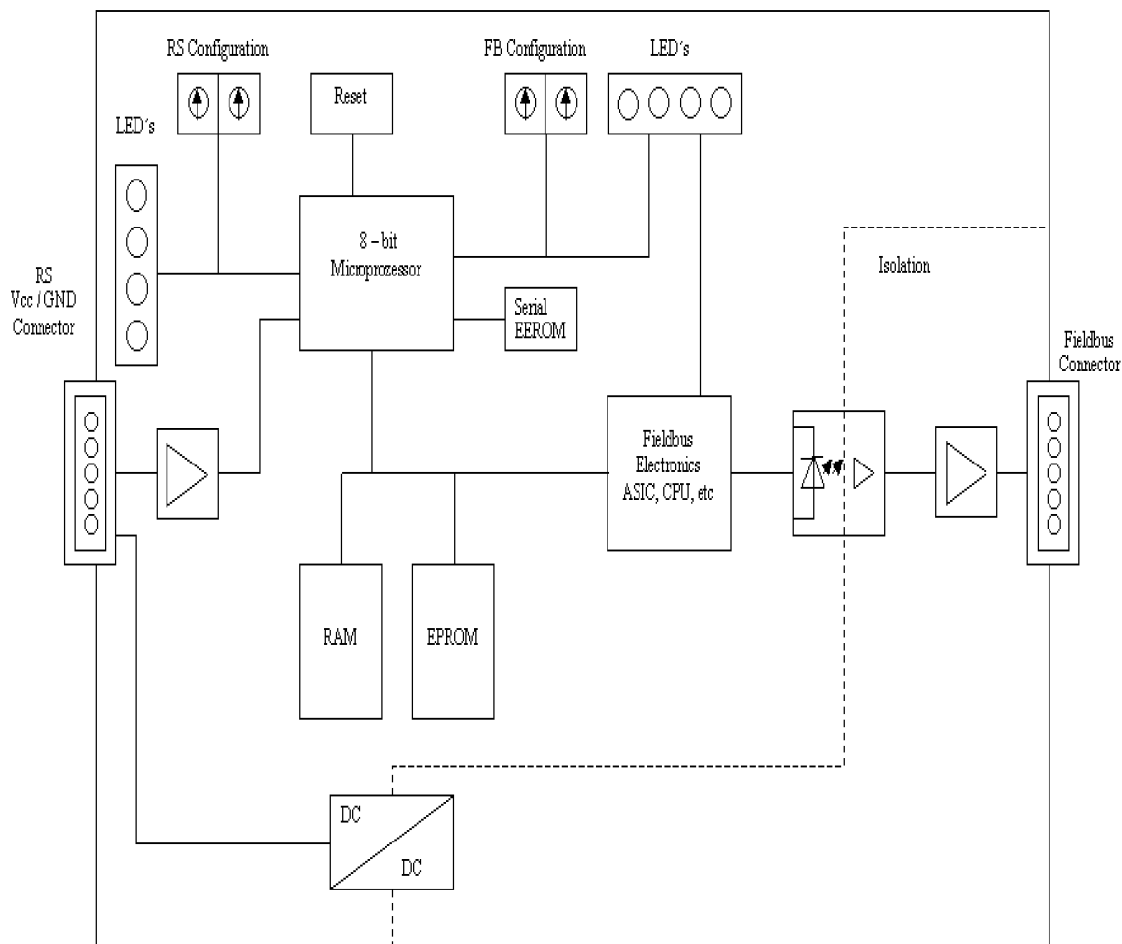
- Electrically isolated RS485 interface to the PROFIBUS DP
- PROFIBUS ASIC
- Microprocessor 89C51RD2
- RAM and EPROM
- Serial interface (RS232, RS485 and RS422) to the device connected externally

3.1 UNIGATE® MB software flow-chart



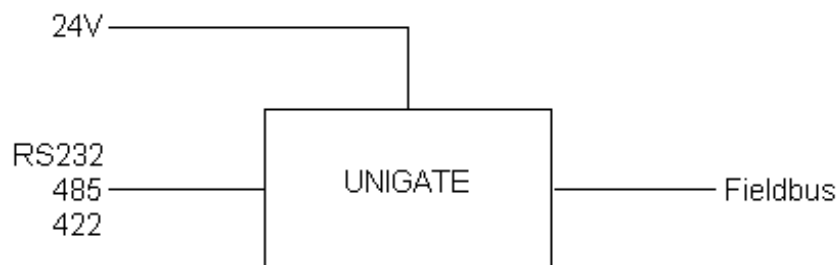
3.2 UNIGATE® block diagram

The following picture shows a typical UNIGATE®-module design.



3.3 UNIGATE® application diagram

The following graph shows a typical connection scheme.



4 Operation modes of the Gateway

4.1 Configuration mode (config mode)

The configuration mode serves to configure the Gateway. The following adjustments are possible in this mode.

- Loading a Script
- Updating the firmware
- Configuring the Gateway

The Gateway will be starting in this mode in case both switches S4 as well as S5 are set on position "F" when switching on the Gateway. Right after switching on the Gateway in the configuration mode it will be sending its starting message, that looks analog with the following message:

```
RS-PBV1-CL (232/422/485) V7.8.2[36] (c)dA Switch=0x00FF
Script(C:8345/16128,V:7693/8192)="Universalscript Deutschmann"
Author="G/S" Version="V 0.2y" Date=09.01.2012 SN=47110001 ID=0
```

In the configuration mode the Gateway always operates with the settings 9600 Bauds, no Parity, 8 Databits and 1 Stopbit, the RS-State LED will always be flashing red, the "Error No/Select ID" LEDs are of no account for the user. All software revisions contain the configuration mode.

4.2 Test mode

Setting of the test mode

The test mode is set by bringing the switches S4 and S5 in position "E". All other switches will not be taken into consideration for the setting of the test mode. Now the Gateway has to be restarted with these settings (by a short disconnection from the power supply).

In the test mode the Gateway always operates with the settings 9600 baud, no parity, 8 databits and 1 stopbit.

The test mode may be helpful to integrate the Gateway in the relevant environment, for instance to test the parameters of the RS-interfaces.

Mode of operation of the test mode

After the restart in the test mode the Gateway will be sending the values 0-15 in hexadecimal representation ("0".."F") in ASCII-coding on the serial side every second. Simultaneously the same values are issued binary on the fieldbus-interface.

In this mode the State-LED on the RS-side will be flashing red, the "Error No/Select ID" LEDs will be displaying the value in a binary way, that is issued that moment. Additionally each character that is received at one of the interfaces will also be output at the same interface as a local echo. On the fieldbus-side only the first byte will be used for the local echo, that means on receiving as well as on transmitting only the first byte of the bus data is looked at, the other bus data do not change compared to the last data.

4.3 Data exchange mode

The Gateway has to be in the data exchange mode, so that a data exchange between the RS-side of the Gateway and the fieldbus is possible. As long as the Gateway is not in the configuration mode or the test mode, the data exchange mode is active. In the data exchange mode the Gateway will execute the downloaded Script with the parameters, that have been preset through WINGATE.

5 RS-interface

5.1 RS-interfaces at the UNIGATE® MB

The UNIGATE® MB - PROFIBUS DP has the interfaces RS232, RS422 and RS485 available.

5.2 Buffer sizes at the UNIGATE® MB

UNIGATE® MB features at the serial side a buffer with the size of 1024 bytes for input data and output data each.

5.3 Framing Check

The length of the stop bit received by the Gateway is checked through the function "Framing Check". Here the stop bit generated by the Gateway is always long enough, so that connected participants can evaluate the stop bit.

Please be aware that the function "Framing Check" becomes effective only in case of 8 data bit and the setting "No parity".

An error is detected and indicated by the Error LEDs in case the stop bit does not show the length 1 bit during the activated check.

The fixed setting for the "Stop Bit Framing Check" is "enabled".

6 SSI-interface

The UNIGATE® also supports the connection of applications or products, that communicate via SSI.

6.1 Initiation of the SSI-interface

The configuration of the SSI-interface is executed in the config mode with the WINGATE software, Protocol SSI. The encoder type and the sampling frequency are defined via the parameter "Resolution" (1 bit..15 bit, 24 bit...25 bit), "SSI Encoder Type" (Binary or Gray code) and "Clock stretch".

6.1.1 Parameter sample frequency (Clock stretch)

You can change the sampling frequency. For this purpose a "Stretch value" is passed that inserts a waiting period after each clock edge.

If a 0 is passed, there is no waiting time.

Thus the following SSI sample frequencies may vary slightly:

Waiting time = 0	→ SSI-Clock ~ 333kHz (No Stretch)
Waiting time = 1	→ SSI-Clock ~ 185kHz
Waiting time = 2	→ SSI-Clock ~ 150kHz
Waiting time = 3	→ SSI-Clock ~ 125kHz
Waiting time = 4	→ SSI-Clock ~ 110kHz
Waiting time = 5	→ SSI-Clock ~ 100kHz
Waiting time = 6	→ SSI-Clock ~ 88kHz
Waiting time = 7	→ SSI-Clock ~ 80kHz
Waiting time = 8	→ SSI-Clock ~ 72kHz
Waiting time = 9	→ SSI-Clock ~ 67kHz
Waiting time = A	→ SSI-Clock ~ 62kHz
Waiting time = B	→ SSI-Clock ~ 58kHz
Waiting time = C	→ SSI-Clock ~ 54kHz
Waiting time = D	→ SSI-Clock ~ 50kHz
Waiting time = E	→ SSI-Clock ~ 48kHz
Waiting time = F	→ SSI-Clock ~ 45kHz

The bit time from which these frequencies were derived, calculate as follows:

$t = 3\mu s + (2 * (+ 0.6\mu s (n * 0.6\mu s)))$, where n corresponds to the "Stretch value" (1.. F).

Without clock extension (n = 0) remains at 3μs → 333kHz!

The max. Bit length of 32 bits and the slowest clock this results in a total readout time of $32 * = 22\mu s \sim 700\mu s$.

6.1.2 Parameter Encoder monitoring (Check Encoder)

An encoder monitoring can be activated via the parameter "Check encoder", as long as the used SSI-encoder supports this function. After the last read encoder bit it is verified if the data line is still at Low for at least one bit. If the UNIGATE® does NOT detect this bit on Low, error 12 is issued. For example it can detect a cable break or a not connected encoder. However, it can also be a misconfigured bit length, or a too slow read out clock.

6.2 Hardware-wiring

The clock wires of the SSI-interface are placed onto the Tx-wires of the RS422-interface and the data wires onto the Rx-wires at the UNIGATE® MB.

X1 (3pin + 4pin screw-plug-connector):

Pin no.	Name	Function at SSI
1	Rx 232	n. c.
2	Tx 232	n. c.
3	AP-GND	n. c.
4	Rx 422+	SSI DAT+
5	Rx 422-	SSI DAT-
6	Tx 422+	SSI CLK+
7	Tx 422-	SSI CLK-

7 Mode of operation of the system

7.1 General explanation

Communication can be split into seven layers, Layer 1 to Layer 7, in accordance with the ISO/OSI model.

The Deutschmann Automation Gateways convert Layers 1 and 2 of the customized bus system (RS485 / RS232 / RS422) to the corresponding Fieldbus system. Layers 3 to 6 are blank, and Layer 7 is converted in accordance with chapter 7.3.

The Gateway can be configured via the software WINGATE.

7.2 Interfaces

The Gateway features the RS232-, RS422- and RS485-interfaces. The switching of the interfaces is done via the configuration (Parameter 232 Interface).

7.3 Data exchange

All data is transferred by the Gateway in dependence of the configuration.

7.4 Possible data lengths

The table below shows the maximum transferable data:

Input data	max. 244 bytes	Variable: maximum value in this case
Output data	max. 244 bytes	Variable: maximum value in this case
Parameters	8 bytes	No user parameters
Configuration data	max. 16 bytes	Dependent on configuration
Diagnosis	max. 8 bytes	1 user diagnostic bit = error code

7.5 Startup phase

The Gateway is parameterized and configured by the Master during the startup phase. Only after a correct termination of the startup phase the data exchange with external devices will take place.

8 Implemented protocols in UNIGATE® MB

UNIGATE® MB is supplied with the Script "Universal Script Deutschmann". The configuration of the protocols is carried out in the configuration mode (see Chapter 4.1) with the software WINGATE. See "Instructions UNIGATE® CL - Configuration with WINGATE". The PDF can also be found on our website under Support/Downloads/Manuals.



Attention: If a Reset Device is carried out it is possible (depending on the firmware version of the UNIGATE) that the "Universal Script" will get lost and must be played in again.

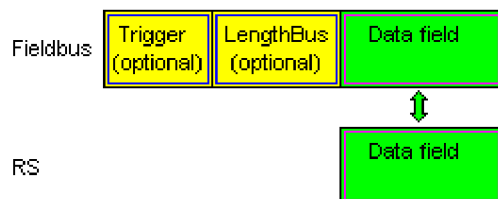
If you no longer have the compiled script, a corresponding request must be sent to Deutschmann Support.

<https://www.deutschmann.de/en/support/enquiry/>

8.1 Protocol: Transparent

The data is transferred bidirectional from the UNIGATE®.

8.1.1 Data structure



On the RS-entry side the timeout time of 2 ms is firmly set. If no more data is received within the timeout period, then the data that has been received so far is transferred to the bus.

If less data is received through Rx than configured by the device description file (I/O-length), then the rest is complemented with ZERO.

Too much data received will be cut off.

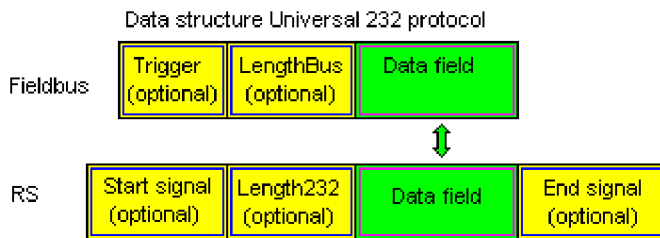
Depending on the fieldbus, the required length of the input and output data (I / O length) can be set via the device configuration of the UNIGATE or via the device description file in the higher-level controller.

8.2 Protocol: Universal 232



The protocol designation "Universal 232" and the relation to the "RS232-interface" in the description have evolved over the years. The protocol also works with RS422 and RS485 though!

8.2.1 Data structure



8.2.2 Fieldbus parameters

Trigger byte: See „The trigger byte“, chapter 8.11

Length byte: See „The length byte“, chapter 8.12

8.2.3 RS232 parameter table

8.2.3.1 Start character (232 Start character)

If this character is defined, the gateway evaluates only the data at the RS232 interface following this start character. Each transmission from the gateway via the RS232 interface is initiated with the start character in this case.

8.2.3.2 Length 232 (232 Length)

If this byte is activated, the gateway, at the receive end, awaits as many bytes of useful data as specified in this byte by the RS232 transmitter. At the transmission end, the gateway then sets this byte to the number of useful data items transmitted by it. If byte "Length232" is not defined, the gateway, on reception at the RS232 interface, waits for the end criterion if this is defined. If no end criterion is defined either, as many characters as can be transferred in the fieldbus transmit buffer are read in via the RS232 interface.

As a special case for this parameter also a length byte with additional Timeout monitoring can be set in WINGATE. In that case the received characters will be discarded at a Timeout.



Attention:

If "Timeout" is selected as end character, then this byte has no significance.

8.2.3.3 Timeout

If the end character is set to "FF", the value that was set in the RX_Timeout parameter is activated and the time entered there is waited for with serial reception, or triggered for new characters. If the set time is exceeded without an event, the end criterion is reached and the characters are copied onto the bus.

8.2.3.4 End character (232 End character)

If this character is defined, the gateway receives data from the RS232 interface up to this character. The "Timeout" criterion can be defined as a special case. In this case, the gateway continues to receive characters until a defined pause occurs. In the special case "Timeout" the "Length 232-byte" has no significance. At the transmit end, the gateway inserts the end character, if defined, as the last character of a transmission.

8.2.4 Communication sequence

The useful data (data area) arriving via the fieldbus is copied in accordance with chapter 8.2.1 transparently into the RS232 data field and transferred via the RS interface, whereby the protocol is supplemented in accordance with the configuration (start character, end character...). NO acknowledgement is issued !

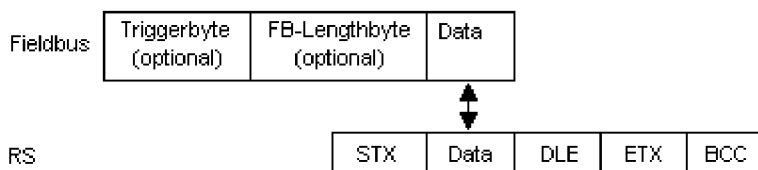
If the "Trigger byte" (see chapter 8.11) is active, data is sent only on a change of this byte. If the "Length byte" (see chapter 8.12) is active, only as many of the following bytes as specified there are transferred.

Receive data at the RS interface is evaluated in accordance with the configured protocol, and the data field (data area (see chapter 8.2.1)) is sent to the fieldbus Master. If more characters have been received than the fieldbus block length, the trailing bytes are truncated and an Rx Overrun is indicated. If less have been received, padding with 0 occurs. If the "Length byte" is active, the number of received useful data items is entered there. If the, "Trigger byte" is active, this is incremented by one after each complete reception operation at the RS interface.

8.3 Protocol: 3964(R)

The 3964 protocol is used to transfer data between two serial devices. One partner must be a high-priority partner and the other must be a low-priority partner in order to resolve initialisation conflicts.

8.3.1 Data structure 3964R



8.3.2 Protocol definitions

The telegram format is as follows:

STX	Data	DLE	ETX	BCC
-----	------	-----	-----	-----

- The received net data is forwarded (transparently) in both directions unchanged.
Attention: The DLE-doubling is excluded from it; that means one DLE (10H) on the bus-side is sent on the RS-side twice. A double DLE on the RS-side is only sent once to the bus-master.
- Data blocking is not scheduled.
- The net data length is restricted to 236 bytes per telegram.
- Communication always runs between high-priority and low-priority communication partners.

8.3.3 Data communication

8.3.3.1 Initiation of data communication by the low-priority user

If the low-priority user also receives an STX in response to a transmitted STX, it interrupts its transmit request, reverts to Receive mode and acknowledges the received STX with DLE.

A DLE in the data string is duplicated and included in the checksum. The BCC is computed from XORing all characters.

8.3.3.2 Conflicts

8.3.3.3 Timeout times

The timeout times are preset by the definition of the 3964R protocol and cannot be overwritten !!!
tq = acknowledgement timeout time (2 s).

The acknowledgement timeout time is started after transmission of control character STX. If no positive acknowledgement arrives within the acknowledgement timeout time, the job is repeated (max. 2 x). If it has not been possible to complete the job positively after two repetitions, the high-priority device nevertheless attempts to establish contact with the low-priority partner by transmitting STX (cycle corresponds to tq).

tz = character timeout time (200 ms)

If the 3964 R driver receives data, it monitors arrival of the individual characters within period tz. If no character is received within the timeout time, the protocol terminates transfer. No acknowledgement is sent to the coupling partner.

8.3.3.4 Retries

In the event of negative acknowledgement or timeout, a telegram transmitted by the high-priority user is repeated twice. After this, the gateway signals communication as disturbed but still attempts to re-establish the connection.

8.3.3.5 Initiation of data communication by the high-priority user

In the case of a negative acknowledgement or timeout, a telegram transmitted by the external device is repeated twice before a fault is signalled.

8.3.4 Protocol type 3964

The difference to protocol type 3964R is:

1. tq = acknowledge monitoring time
2. The checksum byte BCC is missing.

8.4 Protocol: MODBUS-RTU

8.4.1 Notes

- For reasons of simplicity, "MODBUS-RTU" is referred to as "MODBUS" in the text below.
- The terms "input" and "output" are always viewed from the gateway's point of view, i.e. fieldbus input data is the data sent by the fieldbus Master to the gateway.

8.4.2 UNIGATE® as MODBUS-Master

8.4.2.1 Preparation

Before data exchange is commenced, the parameters "Baud rate", "Parity", "Start bits", "Stop bits" and "Data bits" and, if applicable, the "Trigger byte" and the "Length byte" must be set.

In addition, a "Response time" which corresponds to the maximum time up to which the Modbus Slave responds after a request must be set. UNIGATE® multiplies the value entered in WINGATE by 10 ms.

Since the Modbus operates with a variable data format - dependent on the required function and data length - but since the fieldbus requires a fixed data length, this must be preset by means of a selection in the device description file (input and output are identical). This length should be selected by the user such that the longest Modbus request resp. response can be processed.

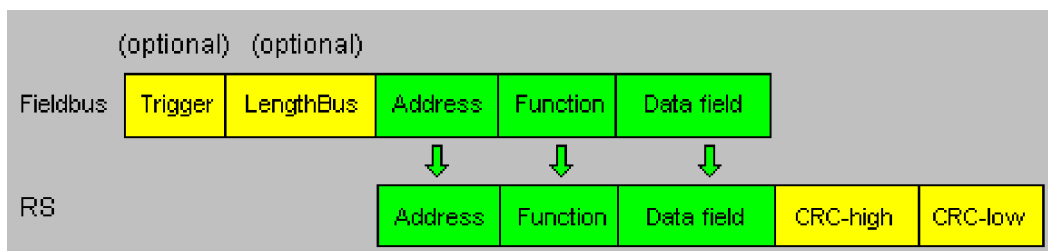
The user can choose whether the fieldbus requests are forwarded to the Modbus in case of a change (On Change) or on request (On Trigger).

In "Change" mode, detection of a change is based on the fact that the fieldbus data is compared with that of the last transmission, and a request is issued by the Modbus only in the case of a change.

The mode "Modbus request on demand" necessitates the first byte in the fieldbus containing a trigger byte (see chapter 8.11). This byte is not transferred to the Modbus and serves only to start a Modbus transmission. For this purpose, the gateway constantly monitors this trigger byte and sends data to the Modbus only when this byte has changed. In the reverse direction (to the fieldbus), the gateway transfers the number of received Modbus data records in this byte, i.e. this byte is incremented by the gateway after each data record.

If the "Length byte" is activated (see chapter 8.12), the gateway transfers only the number of bytes specified there. The number of received Modbus data items is saved in the direction of the fieldbus Master. The length always refers to bytes "Address" to "Data n" (inclusive in each case), always without CRC checksum.

8.4.2.2 Data structure



8.4.2.3 Communication sequence

The gateway always acts as the Slave with respect to the fieldbus and always acts as the Master at the Modbus end. Thus, data exchange must always be started by the fieldbus Master. The gateway fetches this data which must be structured in accordance with chapter "Data structure", from the fieldbus Master, determines the valid length of the Modbus data if the length byte is not activated, adds the CRC checksum and sends this data record as a request on the Modbus.

The response of the selected Slave is then sent to the fieldbus Master by the gateway - without CRC checksum. If no response occurs within the stipulated "Response time", the gateway signals a "TIMEOUT ERROR".

8.4.3 UNIGATE® as MODBUS-Slave

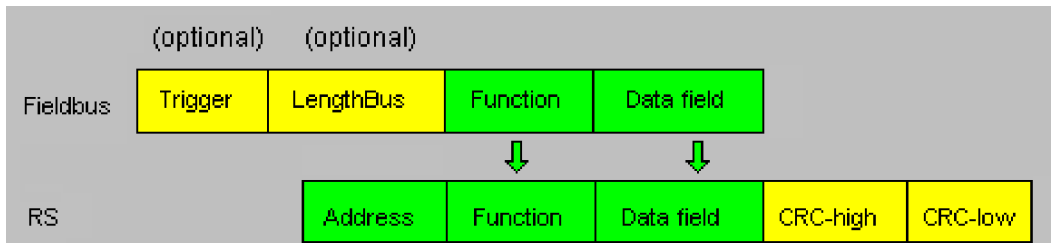
8.4.3.1 Preparation

Before data exchange is commenced, the parameters "Trigger byte" and "Length byte", "Baud rate", "Parity", "Start bits", "Stop bits" and "Data bits" must be set.

At the rotary switch on the RS-side the MODBUS-ID has to be set, under which the gateway is addressed in the Modbus.

Since the Modbus operates with a variable data format - dependent on the required function and data length - but since the fieldbus requires a fixed data length, this must be preset by means of a selection in the device description file. This length should be selected by the user such that the longest Modbus request resp. response can be processed.

8.4.3.2 Data structure



8.4.3.3 Communication sequence

The gateway always acts as the Slave with respect to the fieldbus and also acts as Slave at the Modbus end. A data exchange is always initiated by the MODBUS-Master via the RS-interface. If the Modbus-address (1st Byte) which is sent out by the Modbus-Master is identical with the address set on the gateway, the gateway sends the received data (without Modbus-address and CRC-check sum) to the fieldbus-master (look picture above). With it the gateway optionally completes as an introduction a Trigger byte and a Length byte.

The fieldbus-master detects when it has to analyse a record via the Trigger byte which is incremented by the gateway at every inquiry. The number of the following Modbus-data is to be found in the length byte.

Now the fieldbus-master has to analyse the Modbus-inquiry and it has to send back the answer in the same format (optionally with the leading Trigger byte and Length byte) via the fieldbus to the gateway.

The gateway then takes this answer and completes the Modbus-address and the CRC and sends the data to the Modbus-Master via the RS-interface. With it the data exchange is completed and the gateway waits for a new inquiry from the Modbus-Master.

8.5 Protocol Modbus ASCII Master/Slave

The fieldbus data exchange for Modbus ASCII is identical with RTU. On the serial site the UNIGATE automatically transfers the data in ASCII format.

-> For the description see chapter 8.4.2, UNIGATE® as MODBUS-Master respectively see chapter 8.4.3, UNIGATE® as MODBUS-Slave.

8.6 Protocol „Universal Modbus RTU Slave“

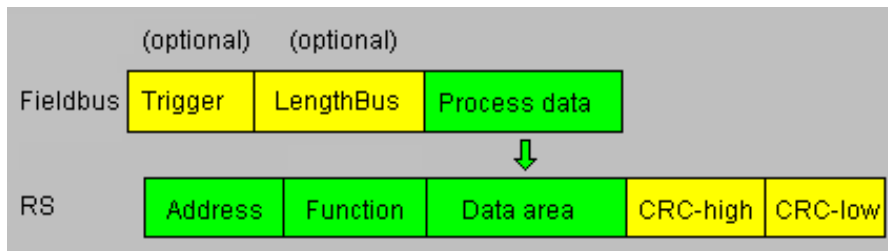
The UNIGATE® is a Modbus slave on the application side. The slave ID is set with the rotary coding switches S4 + S5 (S4 = High, S5 = Low).

8.6.1 Data structure on the fieldbus side e.g.: PROFIBUS

Applies to In and Out

1. Byte: trigger byte, optional (see chapter 8.11, The trigger byte)
2. Byte: fieldbus length byte, optional (see chapter 8.12, The length byte)
3. Byte: process data
4. Byte: process data
-

Data structure



8.6.1.1 Example: FC1 + FC2

A Modbus Master (external device) sends a request with function code 1 or 2.

Note:

Modbus Master Request Address (High + Low)

Address request 01 .. 08 will always be on address 01.

Address request 09 .. 16 will always be on address 09.

Address request 17 .. 24 will always be on 17.

...

Configuration:

-----FIELDBUS-----	
Fieldbus ID	126
Data exchange	On Change
Fieldbus lengthbyte	active
-----APPLICATION-----	
Protocol	Universal Modbus RTU Slave

Fieldbus sends to UNIGATE®

08 01 02 03 04 05 06 07 08 09 0A 0B 0C 0D 0E 0F 10 11 12 13 14 15 16 17 18 19 1A...

Note: The 1. byte (0x08) is the fieldbus length byte. This means only the following 8 Bytes are stored in the UNIGATE®.

Connected Modbus Master sends request to the RS232/484 side of the UNIGATE®:

Start-Address 0001, Length 56 (38h), FC1 (-Read Coil Status)

[01] [01] [00] [00] [00] [38] [3d] [d8]

UNIGATE® sends response via RS232/485:

[01] [01] [07] [01] [02] [03] [04] [05] [06] [07] [6b] [c5]

Display of the data in the Modbus Master (FC1):

```

00001: <1> 00009: <0> 00017: <1> 00025: <0> 00033: <1> 00041: <0> 00049: <1>
00002: <0> 00010: <1> 00018: <1> 00026: <0> 00034: <0> 00042: <1> 00050: <1>
00003: <0> 00011: <0> 00019: <0> 00027: <1> 00035: <1> 00043: <1> 00051: <1>
00004: <0> 00012: <0> 00020: <0> 00028: <0> 00036: <0> 00044: <0> 00052: <0>
00005: <0> 00013: <0> 00021: <0> 00029: <0> 00037: <0> 00045: <0> 00053: <0>
00006: <0> 00014: <0> 00022: <0> 00030: <0> 00038: <0> 00046: <0> 00054: <0>
00007: <0> 00015: <0> 00023: <0> 00031: <0> 00039: <0> 00047: <0> 00055: <0>
00008: <0> 00016: <0> 00024: <0> 00032: <0> 00040: <0> 00048: <0> 00056: <0>
  
```

Example: StartAddress 0008, Length 80, FC2 (Read Input Status)

[01] [02] [00] [07] [00] [50] [c9] [f7]

UNIGATE® sends response via RS232/485:

[01] [02] [0a] [02] [03] [04] [05] [06] [07] [08] [00] [00] [00] [8f] [7a]

8.6.1.2 Example: FC3 (Read Holding Register) + FC4 (Read Input Register)

Fieldbus sends to the UNIGATE®

00 30 02 03 04 05 06 07 08 09 0A 0B 0C 0D 0E 0F 10 11 12 13 14 15 16 17 18 19 1A 20 20 20...

(The configuration is "Data exchange = On Trigger", with an additional 1. control byte in the fieldbus data.)

„Fieldbus length byte = active“, in this example 30h (48d), the UNIGATE® copies the following 48 Byte from the fieldbus into the internal storage.

Connected Modbus Master sends request to the RS232/484 side of the UNIGATE®

[01] [03] [00] [00] [00] [14] [45] [c5]

UNIGATE® sends response via RS232/485:

[01] [03] [28] [02] [03] [04] [05] [06] [07] [08] [09] [0a] [0b] [0c] [0d] [0e] [0f] [10] [11] [12] [13] [14]...
... [15] [16] [17] [18] [19] [1a]

Display of the process data in the Modbus Master:

```
40001: <0203H>
40002: <0405H>
40003: <0607H>
40004: <0809H>
40005: <0A0BH>
40006: <0C0DH>
40007: <0E0FH>
40008: <1011H>
40009: <1213H>
40010: <1415H>
40011: <1617H>
40012: <1819H>
40013: <1A20H>
40014: <2020H>
40015: <2020H>
40016: <0000H>
40017: <0000H>
40018: <0000H>
40019: <0000H>
40020: <0000H>
```

Functionality FC3 and FC4 in Protocol „Universal Modbus (RTU/ASCII) Slave:

From „Universalscript Deutschmann“ V1.5.1:

- FC3 (0x03): Read Holding Registers accesses Puffer Data to SPS.
- FC4 (0x04): Read Input Registers accesses Puffer Data From SPS.

8.6.1.3 Example: Write Single Coil FC5

The Fieldbus Master sent the following data to the UNIGATE® once:

07 01 02 03 04 05 06 07 08 09 0A 0B 0C 0D 0E 0F 10 11 12 13 14 15 16 17 18 19 1A 20 20 20...

1. Byte = Fieldbus length byte

The following 7 byte are stored in the UNIGATE®, the rest is not overwritten.

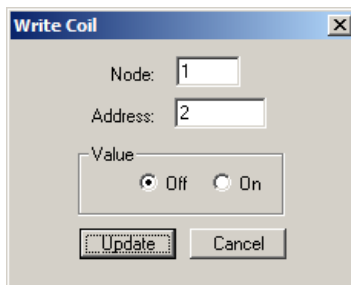
With FC1 and the coil length = 80 (10 Bytes) a Modbus Master reads out the following data:

```

00001: <1> 00017: <1> 00033: <1> 00049: <1> 00065: <0>
00002: <0> 00018: <1> 00034: <0> 00050: <1> 00066: <0>
00003: <0> 00019: <0> 00035: <1> 00051: <1> 00067: <0>
00004: <0> 00020: <0> 00036: <0> 00052: <0> 00068: <0>
00005: <0> 00021: <0> 00037: <0> 00053: <0> 00069: <0>
00006: <0> 00022: <0> 00038: <0> 00054: <0> 00070: <0>
00007: <0> 00023: <0> 00039: <0> 00055: <0> 00071: <0>
00008: <0> 00024: <0> 00040: <0> 00056: <0> 00072: <0>
00009: <0> 00025: <0> 00041: <0> 00057: <0> 00073: <0>
00010: <1> 00026: <0> 00042: <1> 00058: <0> 00074: <0>
00011: <0> 00027: <1> 00043: <1> 00059: <0> 00075: <0>
00012: <0> 00028: <0> 00044: <0> 00060: <0> 00076: <0>
00013: <0> 00029: <0> 00045: <0> 00061: <0> 00077: <0>
00014: <0> 00030: <0> 00046: <0> 00062: <0> 00078: <0>
00015: <0> 00031: <0> 00047: <0> 00063: <0> 00079: <0>
00016: <0> 00032: <0> 00048: <0> 00064: <0> 00080: <0>

```

The fieldbus output data is only updated if it's triggered via a write command from the RS side.
For example via FC 5 :



Address 0002 stays unchanged on 0, however, the fieldbus output data is updated.

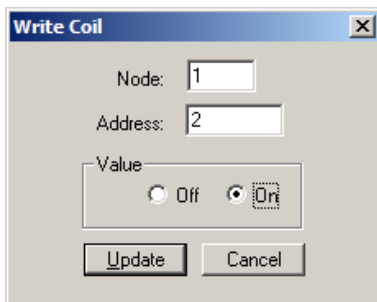
After a reset they are NULL (1st row) at first and are then updated (2nd row):

```
00 00 00 00 00 00 00 00 00 00 00 00 00 00 00 00 00 00 00 00 00 00 00 00 00 00 00 00 ...
```

```
1F 01 02 03 04 05 06 07 00 00 00 00 00 00 00 00 00 00 00 00 00 00 00 00 00 00 00 00...
```

The 1. byte is the fieldbus length byte. It contains the number of usable characters, followed by the payload. The user data (internal buffer) is no bigger than 1024 byte.

In the following example the Bit (Coil) in Address 0002 is set to High (1):



The fieldbus data is updated:


```
1F 03 02 03 04 05 06 07 00 00 00 00 00
```

The internal buffer reserves this value, which means it can be read back by the Master via FC1 Read Coil status:

```
00001: <1>
00002: <1>
00003: <0>
00004: <0>
00005: <0>
00006: <0>
00007: <0>
```

8.6.1.4 Example: Write Single Register FC6

Modbus Master sends the value 1234H in Address 0008:



Der Modbus Master sends the request to the UNIGATE®:

[01] [06] [00] [07] [12] [34] [35] [7c]

The UNIGATE® sends a response:

[01] [06] [00] [07] [12] [34] [35] [7c]

The 1st row shows the fieldbus data BEFORE the write command:

```
1F 03 02 03 04 05 06 07 00 00 00 00 00 00 00 00 00 00 00 00 00 00 00 00 00 00... .
```

```
1F 03 02 03 04 05 06 07 00 00 00 00 00 00 00 12 34 00 00 00 00 00 00 00 00 00 00 00 00 00...
```

The 2nd row shows the fieldbus data AFTER the write command.

You can see that the value 00 07 is send as Address in the Modbus request. (As mentioned in the chapter Universal Modbus Master some Master pull System one as offset.)

This leads to the Byte-Offset for the fieldbus output data => 14. You start counting with the first process data value with Index NULL.

1F 03 02

```
|  +---- 1. process value
+----- fieldbus length byte
```

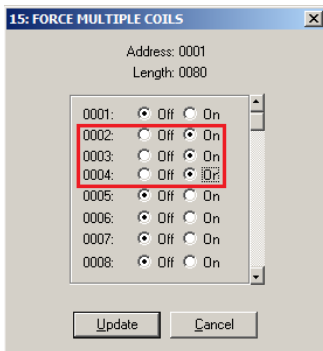
8.6.1.5 Example: Force multiple coils FC 15

Note: The address can only be passed in multiples of 8 incl. Null.

Also 0, 8, 16, ... (Here you also have to keep in mind the offset of 1)

Example: Start address = 0001.

Adr 0002 ... 004 was changed from Low to High



The 1st row shows the fieldbus BEFORE the request:

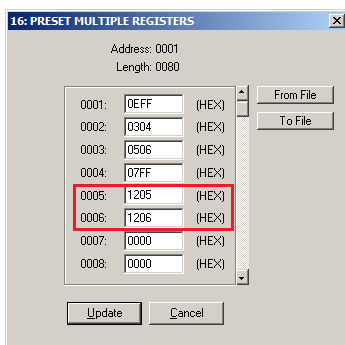
1F 00 FF 03 04 05 06 07 FF 00 00 00 00 00 00 00 00 00 00 00 00 00 00 00 00 00 00...

1F 0E FF 03 04 05 06 07 FF 12 05 12 06 00 00 00 00 00 00 00 00 00 00 00 00 00 00...

2nd row AFTER the request.

Therefor the 1. process data value changed from 00h to 0Eh.

8.6.1.6 Example: Preset multiple register FC16



Only the content of the register address 0005 and 0006 was changed.

The 1st row shows the fieldbus BEFORE the request:

1F 0E FF 03 04 05 06 07 FF 00 00 00 00 00 00 00 00 00 00 00 00 00 00 00 00 00 00...

1F 0E FF 03 04 05 06 07 FF 12 05 12 06 00 00 00 00 00 00 00 00 00 00 00 00 00 00...

The 2nd row shows the fieldbus data content AFTER the update.

8.7 Protocol „Universal Modbus RTU Master“

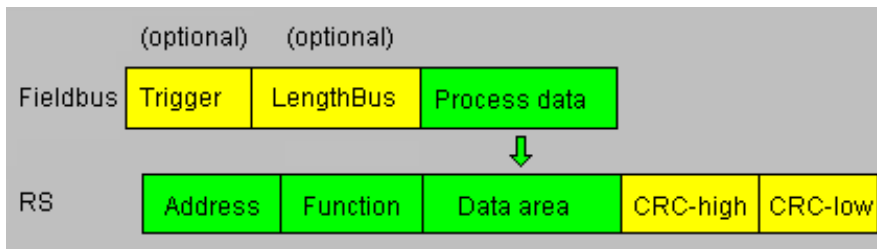
The UNIGATE® is Modbus-Master on the Application side.

8.7.1 Data structure Fieldbus side (e.g. PROFIBUS):

Applies to In and Out

1. Byte: Trigger-Byte, optional (see chapter 8.11, The trigger byte)
2. Byte: Fieldbus length byte, optional (see chapter 8.12, The length byte)
3. Process data

Data structure



8.7.2 Data structure Application side:

According to Modbus RTU Master definition.

Supported functions:

Read coil status FC1	(No. of Points = Bit)
Read input status FC2	(No. of Points = Bit)
Read multiple register FC3	(No. of Points = Word)
Read input registers FC4	(No. of Points = Word)
Force single coil FC5	(No. of Points – not used = fix 1 Bit)
Preset single register FC6	(No. of Points – not used = fix 1 Word)
Force multiple coils FC15	(No. of Points = Bit)
Preset multiple register FC16	(No. of Points = Word)

Note:

status and coil = 1 Bit, register = 16 Bit.

FC 1 + 2 as well as FC 3 + 4 are principally the same, the only difference is the definition of the start address.

At FC1 it starts at Null, at FC2 at 10 000.

At FC3 it starts at 40 000, at FC4 at 30 000

8.7.3 Configuration: via Wingate since wcf Datei Version 396

Parameter Name	value range	Explanation
Modbus Timeout (10ms)	1 ... 255 (10ms ... 2550ms)	Max. Waiting time for the "Response" before an error 9 is generated by timeout. If "RX Poll Retry" > 0 an error is only generated after retries.
RX Poll Retry		Retry of the last, invalid replied "Request"
RX Poll Delay (10ms)		Pause before the next "Request"

Configurations parameter for a Modbus Request:

Req. 1 Slave ID: Slave ID of the Modbus slave participant

Req. 1 Modbus Function: see "supported functions"

Req. 1 StartAdr (hex): Start address (High / Low) of the Modbus register from which should be read/written

Req. 1 No. of Points (dec): Number of the to read/to write register/coils

Req. 1 Fieldbus Map Adr(Byte): Position of the to be copied process value from/to the fieldbus range, depending on the write/read-command. If the value is NULL the process data is automatically lined up behind the other.

Up to 24 requests can be configured.

Additional configuration possibilities in the setting „Req. ... Modbus Function“:

jump to Req. 1: jump to 1. request entry

disable this Req.: skip this request and perform the next request entry.

„(10ms)“ : adjustable in 10ms steps

„(hex)“: Enter in hexadecimal style.

„(dec)“: Enter in decimal style.

„(Byte)“: Counting in bytes, starting at the position Null. Attention: For read commands, e.g. FC3, after the trigger- and lengthbyte the first process value is the position null, which is copied to the fieldbus to the PLC.
For write commands, e.g. FC16, the position Null is the trigger byte.

8.7.3.1 Example: Read coil status FC1

Configuration

Req. 3 Slave ID	1
Req. 3 Modbus Function	Read coil status FC1
Req. 3 StartAdr (hex)	0004
Req. 3 No. of Points (dec)	2
Req. 3 Fieldbus Map Adr(Byte)	6

Data content Modbus Slave

Device Id: <input type="text" value="1"/>	
Address: <input type="text" value="0001"/>	MODBUS Point Type
Length: <input type="text" value="24"/>	<input type="text" value="01: COIL STATUS"/>

00001: <0>	00009: <0>	00017: <0>
00002: <0>	00010: <0>	00018: <0>
00003: <0>	00011: <0>	00019: <0>
00004: <0>	00012: <0>	00020: <0>
00005: <1>	00013: <0>	00021: <0>
00006: <0>	00014: <0>	00022: <0>
00007: <0>	00015: <0>	00023: <0>
00008: <0>	00016: <0>	00024: <0>

UNIGATE® reads Address 5 + 6 and copies it into the 6. byte of the output buffer.

Fieldbus output data (UNIGATE® -> SPS)

66 07 00 00 00 00 00 00 01 00 00 00 00 00 00 00 00 00 00 0

1. Byte = Trigger byte (value = 0x66)
2. Byte = Fieldbus length byte (value = 0x07)
3. Byte = Fieldbus Map Adr 0 (value = 0x00)
4. Byte = Fieldbus Map Adr 1 (value = 0x00)
5. Byte = Fieldbus Map Adr 2 (value = 0x00)
6. Byte = Fieldbus Map Adr 3 (value = 0x00)
7. Byte = Fieldbus Map Adr 4 (value = 0x00)
8. Byte = Fieldbus Map Adr 5 (value = 0x00)
9. Byte = Fieldbus Map Adr 6 (value = 0x01) see configuration
10. Byte = Fieldbus Map Adr 7 (value = 0x00)
11. Byte ...

In the following example the value in address 6 in the Modbus Master is changed from 0 to 1.

```
00001: <0>
00002: <0>
00003: <0>
00004: <0>
00005: <1>
00006: <1>
00007: <0>
00008: <0>
```

AD 07 00 00 00 00 00 00 01 00 00 00 00 00 00 00
 AE 07 00 00 00 00 00 00 03 00 00 00 00 00 00 00

The modification can be seen here:

9. Byte = Fieldbus Map Adr 6 (Wert = 0x01) => 0x03

A modification of address 7 in the Modbus slave has no consequences to the fieldbus output side because "No. Of Points = 2" is set in the configuration.

```
00001: <0>
00002: <0>
00003: <0>
00004: <0>
00005: <1>
00006: <1>
00007: <1>
00008: <0>
```

The value stays unchanged on 0x03:

1F 07 00 00 00 00 00 00 03 00 00 00 0

8.7.3.2 Example: Read input status FC2

The following example shows the content of address 10007 ... 10009 is mapped/copied into the 8. fieldbus output byte.

Req. 1 Slave ID	1
Req. 1 Modbus Function	Read input status FC2
Req. 1 StartAdr (hex)	0006
Req. 1 No. of Points (dec)	3
Req. 1 Fieldbus Map Adr(Byte)	8

Device Id:

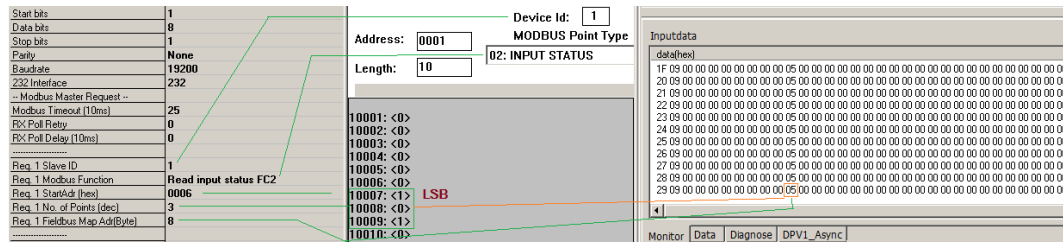
Address: MODBUS Point Type

Length: 02: INPUT STATUS

```
10001: <0>
10002: <0>
10003: <0>
10004: <0>
10005: <0>
10006: <0>
10007: <1>
10008: <0>
10009: <0>
10010: <0>
```

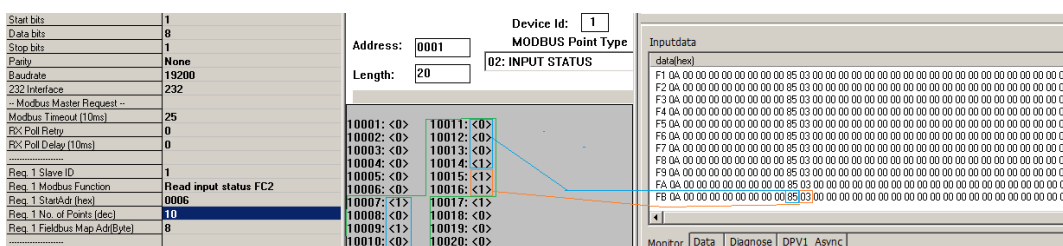
76 09 00 00 00 00 00 00 00 01 00 00 00 00

Here the content of the address 10009 is changed from 0 -> 1



In the following example only the "No. Of Points" is switched to 10.

Which means that now 10 Bits => 2 Byte are read out. This is also the reason why the fieldbus length byte (2. fieldbus byte) at 0x0A increases by 1 Byte.



8.7.3.3 Example: Read multiple register FC3

Protocol	Universal Modbus RTU Master
-- Modbus Master Request --	
Modbus Timeout (10ms)	25
RX Poll Retry	0
RX Poll Delay (10ms)	0

Req. 1 Slave ID	1
Req. 1 Modbus Function	Read multiple register FC3
Req. 1 StartAdr (hex)	0001
Req. 1 No. of Points (dec)	2
Req. 1 Fieldbus Map Adr(Byte)	0

RX Poll Delay = 0 is automatically set to 1 by the firmware.

Modbus-Request:

Byte 1	Byte 2	Byte 3	Byte 4	Byte 5	Byte 6	Byte 7	Byte 8
Slave ID	Modbus Function	StartAdr High	StartAdr Low	No. of Points High	No. of Points Low	CRC High	CRC Low
1	3	0x00	0x01	0	2	x	y

The CRC value is automatically calculated by the UNIGATE®

The UNIGATE[®] sends out the request (RX Poll Retry = 0) one time via the RS interface, and waits a maximum of 250 ms (Modbus Timeout = 25) on the response.

Fieldbus Map Adr = 0 -> not activ

Thereby the addressed slave holds the following data in its registers.:

register	
address	value(hex)
40000	0x0000
40001	0x0202
40002	0x0303
40003	0x0000
40004	0x0000

register = 1 Word = 2 Byte



In the documentation of some applications, an Offset + 1 at the address is assumed. The notation for address "40000" stands for "holding register". But in acutality address 0x0000 is meant by it. This is not uniform in the Modbus-Slave documentations. (E.g. the PC simulation tool "ModSim32" has this offset).

If a valid response is received, the four byte (No. Of Points = 2) process value (Modbus-Data) will be copied to the fieldbus from "Fieldbus Map Adr(Byte)" = 0 on.

Fieldbus data from UNIGATE® -> SPS:

51 13 02 02 03 03 30 04 01 00 01 00 00 00 02 57 00 01 03 00 00 00 00 00 00 00 ...

Byte 0 = Trigger-Byte „0x51“

Byte 1 = Fieldbus length byte „0x13“

Byte 2 = Process value (High) from StartAdr „0x02“

Byte 3 = Process value (Low) from StartAdr „0x02“

Byte 4 = Process value (High) from StartAdr + 1 „0x03“

Byte 5 = Prozess value (Low) from StartAdr + 1 „0x03“

8.7.3.4 Example: Read input registers FC4

(see chapter 8.7.3.3, Example: Read multiple register FC3)

8.7.3.5 Example: Force single coil FC5

At FC5 a bit is set in the Modbus slave, if the mapped fieldbus byte is bigger (>) than NULL.

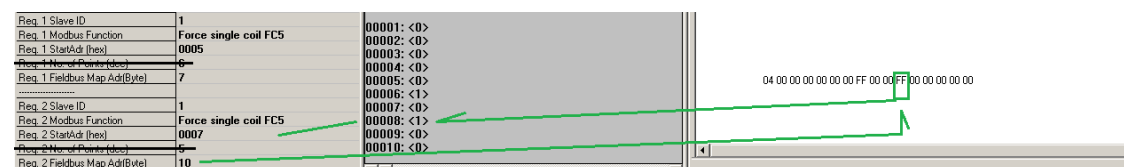
Configuration

Modbus Slave(impact)SPS sends
Fieldbus data (reason)



Note: No. of Points is not required

Another example for when a second request is configured:



8.7.3.6 Example: Preset single register FC6

Configuration

1 Slave ID	1
1 Modbus Function	Preset single register FC6
1 StartAdr (hex)	0005
1 Fieldbus Map Adr(Byte)	7

SPS sends to UNIGATE®

01 00 00 00 00 00 00 00 FF23 00 FF 00 00 00 00 00 FF 00 00 00 00 00 00 00 00 00 00 00 00 00 00 00 00 00 00 00 ...

UNIGATE® sends Modbus RTU request

[01] [06] [00] [05] [ff] [23] [99] [e2]

Modbus Slave sends response

[01] [06] [00] [05] [ff] [23] [99] [e2]

Storage content of Modbus Slave after Response:

```
40001: <0000H>
40002: <0000H>
40003: <0000H>
40004: <0000H>
40005: <0000H>
40006: <FF23H>
40007: <0000H>
40008: <0000H>
40009: <0000H>
40010: <0000H>
```

8.7.3.7 Example: Force multiple coils FC15

Configuration

Req. 1 Slave ID	1
Req. 1 Modbus Function	Force multiple coils FC15
Req. 1 StartAdr (hex)	0002
Req. 1 No. of Points (dec)	10
Req. 1 Fieldbus Map Adr(Byte)	2

Fieldbus Master sends:

0E 00 FF 05 00 ...

UNIGATE® sends request:

[01] [0f] [00] [02] [00] [0a] [02] [ff] [05] [65] [29]

Modbus Slave sends response:

[01] [0f] [00] [02] [00] [0a] [74] [0c]

Storage content of Modbus Slave after response:

```

00001: <0> 00011: <1>
00002: <0> 00012: <0>
00003: <1> 00013: <0>
00004: <1> 00014: <0>
00005: <1> 00015: <0>
00006: <1> 00016: <0>
00007: <1> 00017: <0>
00008: <1> 00018: <0>
00009: <1> 00019: <0>
00010: <1> 00020: <0>

```

Hex	FF	05
Bin		00000 0
Position	8 7 6 5 4 3 2 1	11 10 9

Please keep in mind that No. Of coils = 10, hence, only the lower bit in address 0011 is written at the value 0x05. Address 0013 would already be bit No. 11, which is not transmitted anymore.

8.7.3.8 Example: Preset multiple register FC16

Configuration

Req. 1 Slave ID	1
Req. 1 Modbus Function	Preset multiple register FC16
Req. 1 StartAdr (hex)	0002
Req. 1 No. of Points (dec)	10
Req. 1 Fieldbus Map Adr(Byte)	2

Fieldbus Master sends:

BA 00 01 02 03 04 05 06 07 08 09 0A 0B 0C 0D 0E 0F 10 11 12 13 14 15 16 ...

UNIGATE® sends Request:

[01] [10] [00] [02] [00] [0a] [14] [01] [02] [03] [04] [05] [06] [07] [08] [09] [0a] [0b] [0c] [0d] [0e] [0f]...
... [10] [11] [12] [13] [14] [3d] [e4]

Modbus Slave sends Response:

[01] [10] [00] [02] [00] [0a] [e1] [ce]

Storage content Modbus Slave to Response:

```

40001: <0000H>
40002: <0000H>
40003: <0102H>
40004: <0304H>
40005: <0506H>
40006: <0708H>
40007: <090AH>
40008: <0B0CH>
40009: <0D0EH>
40010: <0F10H>
40011: <1112H>
40012: <1314H>
40013: <0000H>

```

8.8 Protocol „Universal Modbus ASCII Master/Slave“

The fieldbus data exchange for Modbus ASCII is identical with RTU. The UNIGATE® automatically transmits the data in ASCII format on the serial side.

Protocol description: see chapter 8.6 "Protocol „Universal Modbus RTU Slave“" respectively see chapter 8.7 "Protocol „Universal Modbus RTU Master“".

8.9 Protocol: "Ext. Universal Modbus RTU Master"

Available from:

- Firmware version V7.8.3
- Universalscript "CL_Universal_256dyn"
- Software WINGATE from version V2.85 and wcf-file from 407

Identical with the "Universal Modbus RTU Master" protocol, (see Chapter 8.7), with additional configuration possibility. There can be up to 56 requests (instead of 24).

8.10 Protocol SSI

With the SSI protocol, e.g. SSI encoders are evaluated with the UNIGATE® and this information is forwarded to the higher-level controller. Parameters can be used to configure the encoder type, the encoder resolution, the clock frequency and an ERROR bit (if supported) according to the SSI encoder used. See also chapter 6 (SSI-interface).

- Resolution: The range extends from 1 bit to 25 bit. This allows single-turn SSI encoders and multi-turn SSI encoders to be configured.
- SSI Encoder Type: This can be selected between binary and gray code.
- Clock stretch: The range extends from no clock frequency to 45 kHz.
- Check Encoder: An ERROR bit can be activated here if the SSI encoder used supports it.

8.11 The trigger byte

Since the data is always transferred cyclically on PROFIBUS, the gateway must detect when the user wishes to send new data via the serial interface. This is normally done by the gateway comparing the data to be transferred via the PROFIBUS with the old data stored internally - data exchange on change (data exchange -> On Change). In many cases however, this cannot be used as the criterion, e.g. whenever the same data is to be sent. For this reason, the user can set control of transmission via a trigger byte (data exchange -> On Trigger). In this mode, the gateway always sends (and only then) when the trigger byte is changed.

Accordingly, the application program in the control in Normal mode cannot detect whether the gateway has received several identical telegrams. If Trigger-Byte mode is activated, the gateway increments the trigger byte each time a telegram has been received.

The first byte in the PROFIBUS input/output data buffer is used as the trigger byte if this mode is activated.

8.12 The length byte

The user can configure whether the transmit length is also to be stored as a byte in the input/output data area (Fieldbus length byte -> active). In transmit direction, as many bytes as specified in this byte are sent. On reception of a telegram the gateway enters the number of characters received.

8.13 Swap word

With activated "Swap word" the data is word-swapped to and from the fieldbus. I.e. High and Low byte are word-swapped and transferred in a 16-bit word. It affects the entire fieldbus Buffer.

8.14 Appendix / Configuration examples

8.14.1 Example Configuration 1:

Hardware UNIGATE® CL-PROFIBUS

WINGATE _WINGATE_395.wcf

FileOptionsExtrasHelp

☐ more items visible

☐ more items editable

Parameter	Value
Software revision	V 7.8
Device type	Profibus DP (Script)
Script revision	36
Serial Number	35531918
Store Serial Number	No
Script memory	16128
Data memory	8192
-----FIELDBUS-----	
Fieldbus ID	126
Data exchange	On Trigger
Fieldbus length(byte)	inactive
-----APPLICATION-----	
Protocol	Universal Modbus RTU Master
-- Modbus Master Request --	
Modbus Timeout (10ms)	25
RX Poll Retry	0
RX Poll Delay (10ms)	0

Req. 1 Slave ID	1
Req. 1 Modbus Function	Read multiple register FC3
Req. 1 StartAdr (hex)	0001
Req. 1 No. of Points (dec)	2
Req. 1 Fieldbus Map Adr(Byte)	0

Req. 2 Slave ID	1
Req. 2 Modbus Function	Read input registers FC4
Req. 2 StartAdr (hex)	0003
Req. 2 No. of Points (dec)	1
Req. 2 Fieldbus Map Adr(Byte)	4

Req. 3 Slave ID	1
Req. 3 Modbus Function	Read coil status FC1
Req. 3 StartAdr (hex)	0004
Req. 3 No. of Points (dec)	2
Req. 3 Fieldbus Map Adr(Byte)	6

Req. 4 Slave ID	1
Req. 4 Modbus Function	Read input status FC2
Req. 4 StartAdr (hex)	0004
Req. 4 No. of Points (dec)	2
Req. 4 Fieldbus Map Adr(Byte)	8

Req. 5 Slave ID	1
Req. 5 Modbus Function	Read output status FC5
Req. 5 StartAdr (hex)	0004
Req. 5 No. of Points (dec)	2
Req. 5 Fieldbus Map Adr(Byte)	10

Req. 6 Slave ID	1
Req. 6 Modbus Function	Read output status FC5
Req. 6 StartAdr (hex)	0004
Req. 6 No. of Points (dec)	2
Req. 6 Fieldbus Map Adr(Byte)	12

Req. 7 Slave ID	1
Req. 7 Modbus Function	Read output status FC5
Req. 7 StartAdr (hex)	0004
Req. 7 No. of Points (dec)	2
Req. 7 Fieldbus Map Adr(Byte)	14

Req. 8 Slave ID	1
Req. 8 Modbus Function	Read output status FC5
Req. 8 StartAdr (hex)	0004
Req. 8 No. of Points (dec)	2
Req. 8 Fieldbus Map Adr(Byte)	16

Req. 9 Slave ID	1
Req. 9 Modbus Function	Read output status FC5
Req. 9 StartAdr (hex)	0004
Req. 9 No. of Points (dec)	2
Req. 9 Fieldbus Map Adr(Byte)	18

Req. 10 Slave ID	1
Req. 10 Modbus Function	Read output status FC5
Req. 10 StartAdr (hex)	0004
Req. 10 No. of Points (dec)	2
Req. 10 Fieldbus Map Adr(Byte)	20

Req. 11 Slave ID	1
Req. 11 Modbus Function	Read output status FC5
Req. 11 StartAdr (hex)	0004
Req. 11 No. of Points (dec)	2
Req. 11 Fieldbus Map Adr(Byte)	22

Req. 12 Slave ID	1
Req. 12 Modbus Function	Read output status FC5
Req. 12 StartAdr (hex)	0004
Req. 12 No. of Points (dec)	2
Req. 12 Fieldbus Map Adr(Byte)	24

Req. 13 Slave ID	1
Req. 13 Modbus Function	Read output status FC5
Req. 13 StartAdr (hex)	0004
Req. 13 No. of Points (dec)	2
Req. 13 Fieldbus Map Adr(Byte)	26

Req. 14 Slave ID	1
Req. 14 Modbus Function	Read output status FC5
Req. 14 StartAdr (hex)	0004
Req. 14 No. of Points (dec)	2
Req. 14 Fieldbus Map Adr(Byte)	28

Req. 15 Slave ID	1
Req. 15 Modbus Function	Read output status FC5
Req. 15 StartAdr (hex)	0004
Req. 15 No. of Points (dec)	2
Req. 15 Fieldbus Map Adr(Byte)	30

Req. 16 Slave ID	1
Req. 16 Modbus Function	Read output status FC5
Req. 16 StartAdr (hex)	0004
Req. 16 No. of Points (dec)	2
Req. 16 Fieldbus Map Adr(Byte)	32

Req. 17 Slave ID	1
Req. 17 Modbus Function	Read output status FC5
Req. 17 StartAdr (hex)	0004
Req. 17 No. of Points (dec)	2
Req. 17 Fieldbus Map Adr(Byte)	34

Req. 18 Slave ID	1
Req. 18 Modbus Function	Read output status FC5
Req. 18 StartAdr (hex)	0004
Req. 18 No. of Points (dec)	2
Req. 18 Fieldbus Map Adr(Byte)	36

Req. 19 Slave ID	1
Req. 19 Modbus Function	Read output status FC5
Req. 19 StartAdr (hex)	0004
Req. 19 No. of Points (dec)	2
Req. 19 Fieldbus Map Adr(Byte)	38

Req. 20 Slave ID	1
Req. 20 Modbus Function	Read output status FC5
Req. 20 StartAdr (hex)	0004
Req. 20 No. of Points (dec)	2
Req. 20 Fieldbus Map Adr(Byte)	40

Req. 21 Slave ID	1
Req. 21 Modbus Function	Read output status FC5
Req. 21 StartAdr (hex)	0004
Req. 21 No. of Points (dec)	2
Req. 21 Fieldbus Map Adr(Byte)	42

Req. 22 Slave ID	1
Req. 22 Modbus Function	Read output status FC5
Req. 22 StartAdr (hex)	0004
Req. 22 No. of Points (dec)	2
Req. 22 Fieldbus Map Adr(Byte)	44

Req. 23 Slave ID	1
Req. 23 Modbus Function	Read output status FC5
Req. 23 StartAdr (hex)	0004
Req. 23 No. of Points (dec)	2
Req. 23 Fieldbus Map Adr(Byte)	46

Req. 24 Slave ID	1
Req. 24 Modbus Function	Read output status FC5
Req. 24 StartAdr (hex)	0004
Req. 24 No. of Points (dec)	2
Req. 24 Fieldbus Map Adr(Byte)	48

Req. 25 Slave ID	1
Req. 25 Modbus Function	Read output status FC5
Req. 25 StartAdr (hex)	0004
Req. 25 No. of Points (dec)	2
Req. 25 Fieldbus Map Adr(Byte)	50

Req. 26 Slave ID	1
Req. 26 Modbus Function	Read output status FC5
Req. 26 StartAdr (hex)	0004
Req. 26 No. of Points (dec)	2
Req. 26 Fieldbus Map Adr(Byte)	52

Req. 27 Slave ID	1
Req. 27 Modbus Function	Read output status FC5
Req. 27 StartAdr (hex)	0004
Req. 27 No. of Points (dec)	2
Req. 27 Fieldbus Map Adr(Byte)	54

Req. 28 Slave ID	1
Req. 28 Modbus Function	Read output status FC5
Req. 28 StartAdr (hex)	0004
Req. 28 No. of Points (dec)	2
Req. 28 Fieldbus Map Adr(Byte)	56

Req. 29 Slave ID	1
Req. 29 Modbus Function	Read output status FC5
Req. 29 StartAdr (hex)	0004
Req. 29 No. of Points (dec)	2
Req. 29 Fieldbus Map Adr(Byte)	58

Req. 30 Slave ID	1
Req. 30 Modbus Function	Read output status FC5
Req. 30 StartAdr (hex)	0004
Req. 30 No. of Points (dec)	2
Req. 30 Fieldbus Map Adr(Byte)	60

Req. 31 Slave ID	1
Req. 31 Modbus Function	Read output status FC5
Req. 31 StartAdr (hex)	0004
Req. 31 No. of Points (dec)	2
Req. 31 Fieldbus Map Adr(Byte)	62

Req. 32 Slave ID	1
Req. 32 Modbus Function	Read output status FC5
Req. 32 StartAdr (hex)	0004
Req. 32 No. of Points (dec)	2
Req. 32 Fieldbus Map Adr(Byte)	64

Req. 33 Slave ID	1
Req. 33 Modbus Function	Read output status FC5
Req. 33 StartAdr (hex)	0004
Req. 33 No. of Points (dec)	2
Req. 33 Fieldbus Map Adr(Byte)	66

Req. 34 Slave ID	1
Req. 34 Modbus Function	Read output status FC5
Req. 34 StartAdr (hex)	0004
Req. 34 No. of Points (dec)	2
Req. 34 Fieldbus Map Adr(Byte)	68

Req. 35 Slave ID	1
Req. 35 Modbus Function	Read output status FC5
Req. 35 StartAdr (hex)	0004
Req. 35 No. of Points (dec)	2
Req. 35 Fieldbus Map Adr(Byte)	70

Req. 36 Slave ID	1
Req. 36 Modbus Function	Read output status FC5
Req. 36 StartAdr (hex)	0004
Req. 36 No. of Points (dec)	2
Req. 36 Fieldbus Map Adr(Byte)	72

Req. 37 Slave ID	1
Req. 37 Modbus Function	Read output status FC5
Req. 37 StartAdr (hex)	0004
Req. 37 No. of Points (dec)	2
Req. 37 Fieldbus Map Adr(Byte)	74

Req. 38 Slave ID	1
Req. 38 Modbus Function	Read output status FC5
Req. 38 StartAdr (hex)	0004
Req. 38 No. of Points (dec)	2
Req. 38 Fieldbus Map Adr(Byte)	76

Req. 39 Slave ID	1
Req. 39 Modbus Function	Read output status FC5
Req. 39 StartAdr (hex)	0004
Req. 39 No. of Points (dec)	2
Req. 39 Fieldbus Map Adr(Byte)	78

Req. 40 Slave ID	1
Req. 40 Modbus Function	Read output status FC5
Req. 40 StartAdr (hex)	0004
Req. 40 No. of Points (dec)	2
Req. 40 Fieldbus Map Adr(Byte)	80

Req. 41 Slave ID	1
Req. 41 Modbus Function	Read output status FC5
Req. 41 StartAdr (hex)	0004
Req. 41 No. of Points (dec)	2
Req. 41 Fieldbus Map Adr(Byte)	82

Req. 42 Slave ID	1
Req. 42 Modbus Function	Read output status FC5
Req. 42 StartAdr (hex)	0004
Req. 42 No. of Points (dec)	2
Req. 42 Fieldbus Map Adr(Byte)	84

Req. 43 Slave ID	1
Req. 43 Modbus Function	Read output status FC5
Req. 43 StartAdr (hex)	0004
Req. 43 No. of Points (dec)	2
Req. 43 Fieldbus Map Adr(Byte)	86

Req. 44 Slave ID	1
Req. 44 Modbus Function	Read output status FC5
Req. 44 StartAdr (hex)	0004
Req. 44 No. of Points (dec)	2
Req. 44 Fieldbus Map Adr(Byte)	88

Req. 45 Slave ID	1
Req. 45 Modbus Function	Read output status FC5
Req. 45 StartAdr (hex)	0004
Req. 45 No. of Points (dec)	2
Req. 45 Fieldbus Map Adr(Byte)	90

Req. 46 Slave ID	1
Req. 46 Modbus Function	Read output status FC5
Req. 46 StartAdr (hex)	0004
Req. 46 No. of Points (dec)	2
Req. 46 Fieldbus Map Adr(Byte)	92

Req. 47 Slave ID	1
Req. 47 Modbus Function	Read output status FC5
Req. 47 StartAdr (hex)	0004
Req. 47 No. of Points (dec)	2
Req. 47 Fieldbus Map Adr(Byte)	94

Req. 48 Slave ID	1
Req. 48 Modbus Function	Read output status FC5
Req. 48 StartAdr (hex)	0004
Req. 48 No. of Points (dec)	2
Req. 48 Fieldbus Map Adr(Byte)	96

Req. 49 Slave ID	1
Req. 49 Modbus Function	Read output status FC5
Req. 49 StartAdr (hex)	0004
Req. 49 No. of Points (dec)	2
Req. 49 Fieldbus Map Adr(Byte)	98

Req. 50 Slave ID	1
Req. 50 Modbus Function	Read output status FC5
Req. 50 StartAdr (hex)	0004
Req. 50 No. of Points (dec)	2
Req. 50 Fieldbus Map Adr(Byte)	100

Req. 51 Slave ID	1
Req. 51 Modbus Function	Read output status FC5
Req. 51 StartAdr (hex)	0004
Req. 51 No. of Points (dec)	2
Req. 51 Fieldbus Map Adr(Byte)	102

Req. 52 Slave ID	1
Req. 52 Modbus Function	Read output status FC5
Req. 52 StartAdr (hex)	0004
Req. 52 No. of Points (dec)	2
Req. 52 Fieldbus Map Adr(Byte)	104

Req. 53 Slave ID	1
Req. 53 Modbus Function	Read output status FC5
Req. 53 StartAdr (hex)	0004
Req. 53 No. of Points (dec)	2
Req. 53 Fieldbus Map Adr(Byte)	106

Req. 54 Slave ID	1
Req. 54 Modbus Function	Read output status FC5
Req. 54 StartAdr (hex)	0004
Req. 54 No. of Points (dec)	2
Req. 54 Fieldbus Map Adr(Byte)	108

Req. 55 Slave ID	1
Req. 55 Modbus Function	Read output status FC5
Req. 55 StartAdr (hex)	0004
Req. 55 No. of Points (dec)	2
Req. 55 Fieldbus Map Adr(Byte)	110

Req. 56 Slave ID	1
Req. 56 Modbus Function	Read output status FC5
Req. 56 StartAdr (hex)	0004
Req. 56 No. of Points (dec)	2
Req. 56 Fieldbus Map Adr(Byte)	112

Req. 57 Slave ID	1
Req. 57 Modbus Function	Read output status FC5
Req. 57 StartAdr (hex)	0004
Req. 57 No. of Points (dec)	2
Req. 57 Fieldbus Map Adr(Byte)	114

Req. 58 Slave ID	1
Req. 58 Modbus Function	Read output status FC5
Req. 58 StartAdr (hex)	0004
Req. 58 No. of Points (dec)	2
Req. 58 Fieldbus Map Adr(Byte)	116

Req. 59 Slave ID	1
Req. 59 Modbus Function	Read output status FC5
Req. 59 StartAdr (hex)	0004
Req. 59 No. of Points (dec)	2
Req. 59 Fieldbus Map Adr(Byte)	118

Req. 60 Slave ID	1
Req. 60 Modbus Function	Read output status FC5
Req. 60 StartAdr (hex)	0004
Req. 60 No. of Points (dec)	2
Req. 60 Fieldbus Map Adr(Byte)	120

Req. 61 Slave ID	1
Req. 61 Modbus Function	Read output status FC5
Req. 61 StartAdr (hex)	0004
Req. 61 No. of Points (dec)	2
Req. 61 Fieldbus Map Adr(Byte)	122

Req. 62 Slave ID	1
Req. 62 Modbus Function	Read output status FC5
Req. 62 StartAdr (hex)	0004
Req. 62 No. of Points (dec)	2
Req. 62 Fieldbus Map Adr(Byte)	124

Req. 63 Slave ID	1
Req. 63 Modbus Function	Read output status FC5
Req. 63 StartAdr (hex)	0004
Req. 63 No. of Points (dec)	2
Req. 63 Fieldbus Map Adr(Byte)	126

Req. 64 Slave ID	1
Req. 64 Modbus Function	Read output status FC5
Req. 64 StartAdr (hex)	0004
Req. 64 No. of Points (dec)	2
Req. 64 Fieldbus Map Adr(Byte)	128

Req. 65 Slave ID	1
Req. 65 Modbus Function	Read output status FC5
Req. 65 StartAdr (hex)	0004
Req. 65 No. of Points (dec)	2
Req. 65 Fieldbus Map Adr(Byte)	130

Req. 66 Slave ID	1
Req. 66 Modbus Function	Read output status FC5
Req. 66 StartAdr (hex)	0004
Req. 66 No. of Points (dec)	2
Req. 66 Fieldbus Map Adr(Byte)	132

Req. 67 Slave ID	1
Req. 67 Modbus Function	Read output status FC5
Req. 67 StartAdr (hex)	0004
Req. 67 No. of Points (dec)	2
Req. 67 Fieldbus Map Adr(Byte)	134

Req. 68 Slave ID	1
Req. 68 Modbus Function	Read output status FC5
Req. 68 StartAdr (hex)	0004
Req. 68 No. of Points (dec)	2
Req. 68 Fieldbus Map Adr(Byte)	136

Req. 69 Slave ID	1
Req. 69 Modbus Function	Read output status FC5
Req. 69 StartAdr (hex)	0004
Req. 69 No. of Points (dec)	2
Req. 69 Fieldbus Map Adr(Byte)	138

Req. 70 Slave ID	1
Req. 70 Modbus Function	Read output status FC5
Req. 70 StartAdr (hex)	0004
Req. 70 No. of Points (dec)	2
Req. 70 Fieldbus Map Adr(Byte)	140

Req. 71 Slave ID	1
Req. 71 Modbus Function	Read output status FC5
Req. 71 StartAdr (hex)	0004
Req. 71 No. of Points (dec)	2
Req. 71 Fieldbus Map Adr(Byte)	142

Req. 72 Slave ID	1
Req. 72 Modbus Function	Read output status FC5
Req. 72 StartAdr (hex)	0004
Req. 72 No. of Points (dec)	2
Req. 72 Fieldbus Map Adr(Byte)	144

Req. 73 Slave ID	1
Req. 73 Modbus Function	Read output status FC5
Req. 73 StartAdr (hex)	0004
Req. 73 No. of Points (dec)	2
Req. 73 Fieldbus Map Adr(Byte)	146

Req. 74 Slave ID	1
Req. 74 Modbus Function	Read output status FC5
Req. 74 StartAdr (hex)	0004
Req. 74 No. of Points (dec)	2
Req. 74 Fieldbus Map Adr(Byte)	148

Req. 75 Slave ID	1
Req. 75 Modbus Function	Read output status FC5
Req. 75 StartAdr (hex)	0004
Req. 75 No. of Points (dec)	2
Req. 75 Fieldbus Map Adr(Byte)	150

Req. 76 Slave ID	1
Req. 76 Modbus Function	Read output status FC5
Req. 76 StartAdr (hex)	0004
Req. 76 No. of Points (dec)	2
Req. 76 Fieldbus Map Adr(Byte)	152

Req. 77 Slave ID	1
Req. 77 Modbus Function	Read output status FC5
Req. 77 StartAdr (hex)	0004
Req. 77 No. of Points (dec)	2
Req. 77 Fieldbus Map Adr(Byte)	154

Req. 78 Slave ID	1
Req. 78 Modbus Function	Read output status FC5
Req. 78 StartAdr (hex)	0004
Req. 78 No. of Points (dec)	2
Req. 78 Fieldbus Map Adr(Byte)	156

Req. 79 Slave ID	1
Req. 79 Modbus Function	Read output status FC5
Req. 79 StartAdr (hex)	0004
Req. 79 No. of Points (dec)	2
Req. 79 Fieldbus Map Adr(Byte)	158

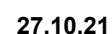
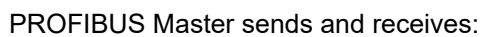
Req. 80 Slave ID	1
Req. 80 Modbus Function	Read output status FC5
Req. 80 StartAdr (hex)	0004
Req. 80 No. of Points (dec)	2
Req. 80 Fieldbus Map Adr(Byte)	160

Req. 81 Slave ID	1
Req. 81 Modbus Function	Read output status FC5
Req. 81 StartAdr (hex)	0004
Req. 81 No. of Points (dec)	2
Req. 81 Fieldbus Map Adr(Byte)	162

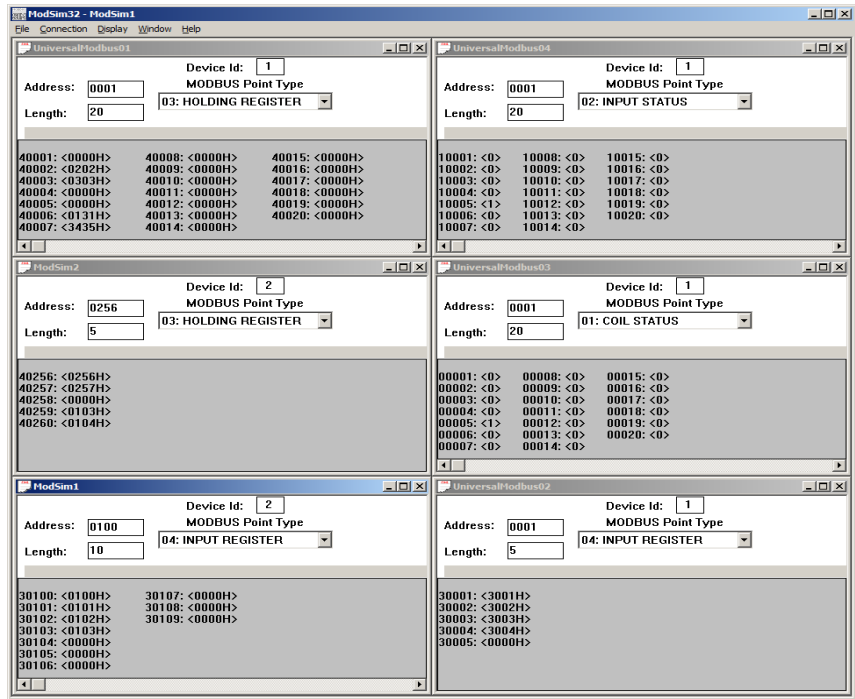
Req. 82 Slave ID	1
Req. 82 Modbus Function	Read output status FC5
Req. 82 StartAdr (hex)	0004
Req. 82 No. of Points (dec)	2
Req. 82 Fieldbus Map Adr(Byte)	164

Req. 83 Slave ID	1
Req. 83 Modbus Function	Read output status FC5
Req. 83 StartAdr (hex)	0004
Req. 83 No. of Points (dec)	2
Req. 83 Fieldbus Map Adr(Byte)	166

Req. 84 Slave ID	1
Req. 84 Modbus Function	Read output status FC5
Req. 84 StartAdr (hex)	0004
Req. 84 No. of Points (dec)	2

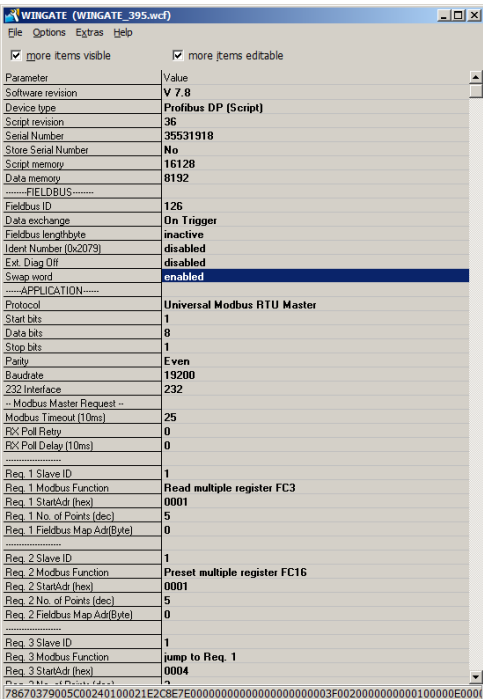


Modbus Slave storage content:



8.14.2 Configuration with Swap Word

Configuration with „Swap Word“ = enabled. Fieldbus data is swapped to the Modbus slave. Meaning High Byte and Low Byte are switched.



Fieldbus Master sends and receives.

Profinet Module

File Options Help

Outputdata: Send

hex: Autosend Off 1000 ms

time	length	data(hex)	data(ASCII)
16:42.43.547	32	00 00 FF 00 31 32 33 34 35 36 37 38 ...	y 1234567890abcdefgghijklmnopqr
16:43.23.086	32	FF 00 FF 00 31 32 33 34 35 36 37 38 ...	y y 1234567890abcdefgghijklmnopqr
16:46.34.463	32	00 00 FF 00 31 32 33 34 35 36 37 38 ...	y 1234567890abcdefgghijklmnopqr
16:47.00.451	32	FF 00 FF 00 31 32 33 34 35 36 37 38 ...	y y 1234567890abcdefgghijklmnopqr
16:54.51.690	32	00 00 FF 00 31 32 33 34 35 36 37 38 ...	y 1234567890abcdefgghijklmnopqr
16:55.29.201	32	01 00 FF FF 31 32 33 34 35 36 37 38 ...	y y 1234567890abcdefgghijklmnopqr
16:55.49.369	32	00 00 FF FF 31 32 33 34 35 36 37 38 ...	y y 1234567890abcdefgghijklmnopqr
16:56.18.977	32	02 00 01 FF 31 32 33 34 35 36 37 38 ...	y 1234567890abcdefgghijklmnopqr
16:56.49.360	32	03 00 01 01 31 32 33 34 35 36 37 38 ...	L 1234567890abcdefgghijklmnopqr
16:57.05.599	32	04 00 03 01 31 32 33 34 35 36 37 38 ...	L L 1234567890abcdefgghijklmnopqr
17:02.15.684	32	00 00 03 01 31 32 33 34 35 36 37 38 ...	L 1234567890abcdefgghijklmnopqr

Inputdata

time	length	data(hex)	data(ASCII)
17:03.43.242	32	23 0A 00 00 03 01 31 32 33 34 35 36 00 00 00 00 00 00 00 00 00 00 00 00 ..	# L 123456
17:03.43.459	32	24 0A 00 00 03 01 31 32 33 34 35 36 00 00 00 00 00 00 00 00 00 00 00 00 ..	% L 123456
17:03.43.678	32	25 0A 00 00 03 01 31 32 33 34 35 36 00 00 00 00 00 00 00 00 00 00 00 00 ..	\$ L 123456
17:03.43.897	32	26 0A 00 00 03 01 31 32 33 34 35 36 00 00 00 00 00 00 00 00 00 00 00 00 ..	& L 123456
17:03.44.118	32	27 0A 00 00 03 01 31 32 33 34 35 36 00 00 00 00 00 00 00 00 00 00 00 00 ..	' L 123456
17:03.44.334	32	28 0A 00 00 03 01 31 32 33 34 35 36 00 00 00 00 00 00 00 00 00 00 00 00 ..	{ L 123456
17:03.44.443	32	29 0A 00 00 03 01 31 32 33 34 35 36 00 00 00 00 00 00 00 00 00 00 00 00 ..	L 123456
17:03.44.664	32	2A 0A 00 00 03 01 31 32 33 34 35 36 00 00 00 00 00 00 00 00 00 00 00 00 ..	* L 123456
17:03.44.878	32	2B 0A 00 00 03 01 31 32 33 34 35 36 00 00 00 00 00 00 00 00 00 00 00 00 ..	+ L 123456
17:03.45.102	32	2C 0A 00 00 03 01 31 32 33 34 35 36 00 00 00 00 00 00 00 00 00 00 00 00 ..	, L 123456
17:03.45.318	32	2D 0A 00 00 03 01 31 32 33 34 35 36 00 00 00 00 00 00 00 00 00 00 00 00 ..	- L 123456

Monitor Data Diagnose DPV1_Async

Profinet DP V3.33 COM2 data length ok

The screenshot displays the ModSim32 - Universal Modbus01 application with four windows showing Modbus data for different devices and registers.

UniversalModbus01 (Top Left): Device Id: 1, MODBUS Point Type: 03: HOLDING REGISTER. Address: 0001, Length: 20. Data table shows 16 registers (0001-000F) with values 0000H.

Address	Value
0001: <0000H>	0000H
0002: <0000H>	0000H
0003: <0103H>	0000H
0004: <3231H>	0000H
0005: <3433H>	0000H
0006: <3635H>	0000H
0007: <0000H>	0000H
0008: <0000H>	0000H
0009: <0000H>	0000H
0010: <0000H>	0000H
0011: <0000H>	0000H
0012: <0000H>	0000H
0013: <0000H>	0000H
0014: <0000H>	0000H
0015: <0000H>	0000H
0016: <0000H>	0000H
0017: <0000H>	0000H
0018: <0000H>	0000H
0019: <0000H>	0000H
0020: <0000H>	0000H

UniversalModbus04 (Top Right): Device Id: 1, MODBUS Point Type: 02: INPUT STATUS. Address: 0001, Length: 20. Data table shows 8 coils (0001-0007) with values 0.

Address	Value
0001: <0>	0
0002: <0>	0
0003: <0>	0
0004: <0>	0
0005: <1>	0
0006: <0>	0
0007: <0>	0
0008: <0>	0
0009: <0>	0
0010: <0>	0
0011: <0>	0
0012: <0>	0
0013: <0>	0
0014: <0>	0
0015: <0>	0
0016: <0>	0
0017: <0>	0
0018: <0>	0
0019: <0>	0
0020: <0>	0

UniversalModbus07 (Bottom Left): Device Id: 2, MODBUS Point Type: 03: HOLDING REGISTER. Address: 0256, Length: 5. Data table shows 5 registers (0256-025F) with values 0256H, 0257H, 0000H, 0103H, and 0104H.

Address	Value
0256: <0256H>	0256H
0257: <0257H>	0257H
0258: <0000H>	0000H
0259: <0103H>	0103H
0260: <0104H>	0104H

UniversalModbus03 (Bottom Right): Device Id: 1, MODBUS Point Type: 01: COIL STATUS. Address: 0001, Length: 20. Data table shows 8 coils (0001-0007) with values 0.

Address	Value
0001: <0>	0
0002: <1>	0
0003: <1>	0
0004: <0>	0
0005: <0>	0
0006: <0>	0
0007: <0>	0
0008: <0>	0
0009: <0>	0
0010: <1>	0
0011: <0>	0
0012: <0>	0
0013: <0>	0
0014: <0>	0
0015: <0>	0
0016: <0>	0
0017: <0>	0
0018: <0>	0
0019: <0>	0
0020: <0>	0

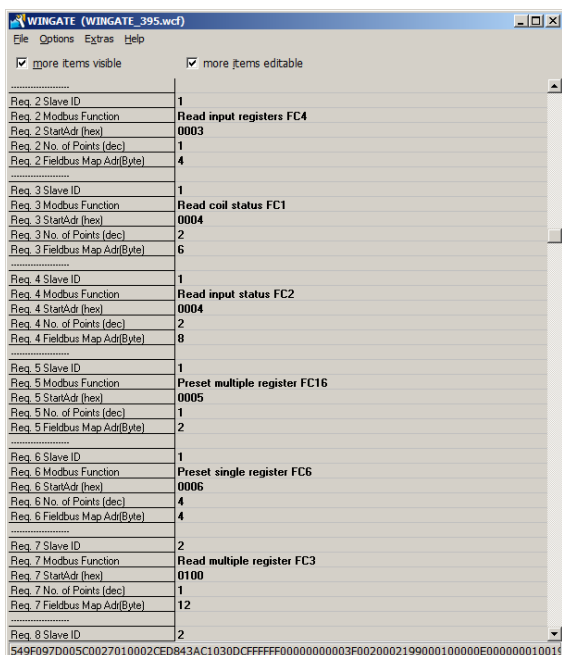
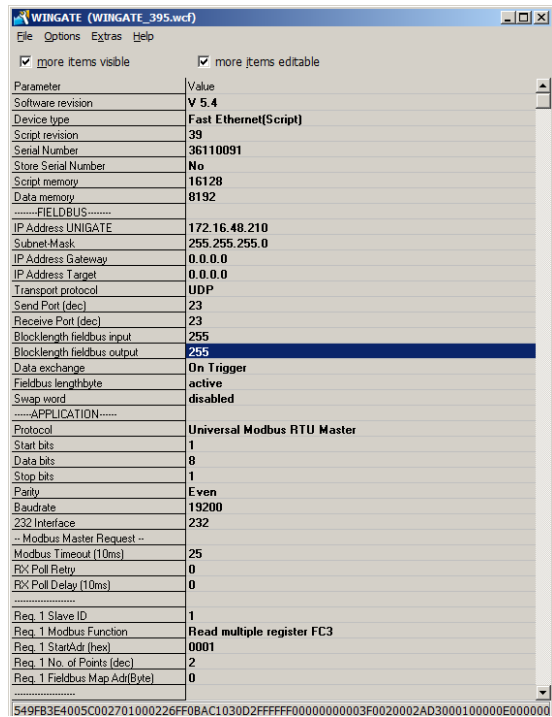
UniversalModbus08 (Bottom Left): Device Id: 2, MODBUS Point Type: 04: INPUT REGISTER. Address: 0100, Length: 10. Data table shows 10 registers (0100-010F) with values 0100H, 0101H, 0102H, 0103H, 0000H, 0000H, 0000H, 0000H, 0000H, and 0000H.

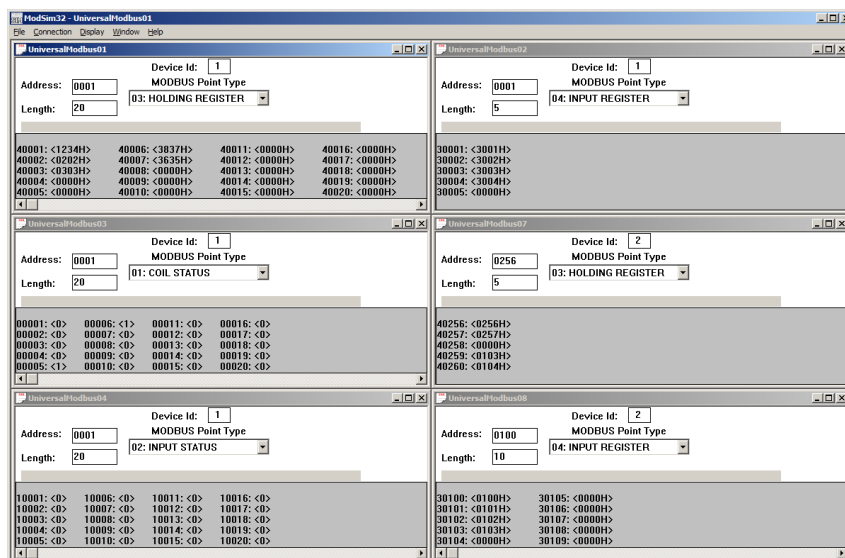
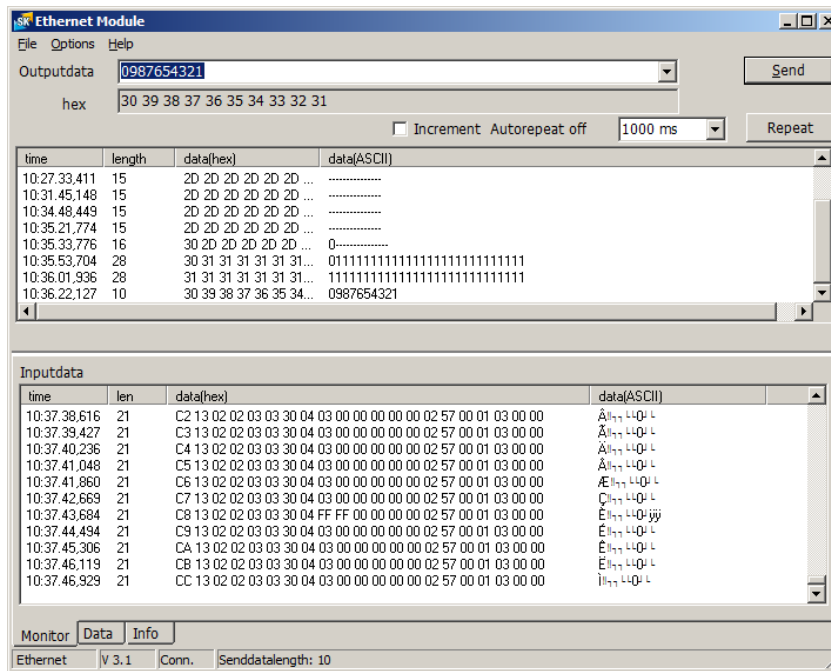
Address	Value
0100: <0100H>	0100H
0101: <0101H>	0101H
0102: <0102H>	0102H
0103: <0103H>	0103H
0104: <0000H>	0000H
0105: <0000H>	0000H
0106: <0000H>	0000H
0107: <0000H>	0000H
0108: <0000H>	0000H
0109: <0000H>	0000H

UniversalModbus02 (Bottom Right): Device Id: 1, MODBUS Point Type: 04: INPUT REGISTER. Address: 0001, Length: 5. Data table shows 5 registers (0001-0005) with values 3001H, 3002H, 3003H, 3004H, and 0000H.

Address	Value
0001: <3001H>	3001H
0002: <3002H>	3002H
0003: <3003H>	3003H
0004: <3004H>	3004H
0005: <0000H>	0000H

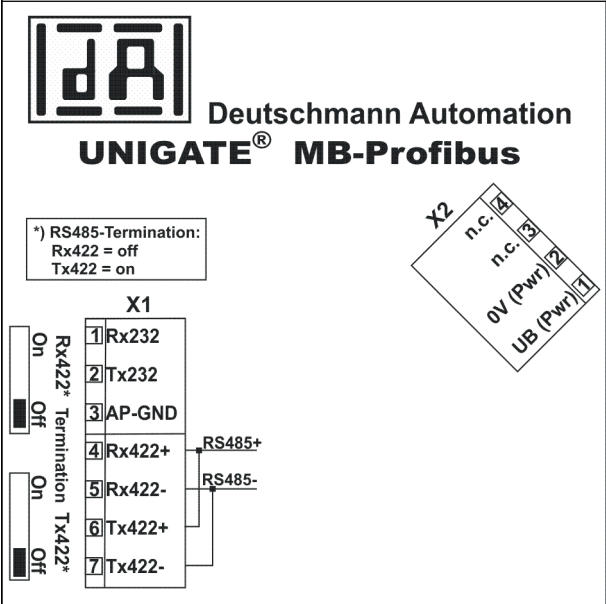
8.14.3 Example with Fast Ethernet



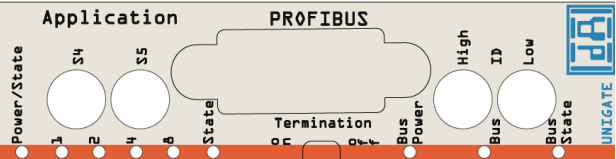


9 Hardware ports, switches and LEDs

9.1 Device labeling



Picture 1: Terminal labeling and termination



Picture 2: Front panel: Rotary switches, LEDs and termination PB



In case the front panel should pop out it does not affect the device's function or quality. It can be put in again without problems.

9.2 Connectors

9.2.1 Connector to the external device (RS-interface)

The serial interface is available at the plug accessible on the upper side of the device.

Pin assignment X1 (3-pole and 4-pole screw-type plug connector)

Pin No.	Name	Function
1	Rx 232	Receive signal
2	Tx 232	Transmit signal
3	AP-GND	Application Ground
4	Rx 422+ (485+)	Receive signal
5	Rx 422- (485-)	Receive signal
6	Tx 422+ (485+)	Transmit signal
7	Tx 422- (485-)	Transmit signal



For the operation at a 485-interface the two pins labeled "485-" have to be connected together.
Also the two pins "485+".

9.2.2 Connector supply voltage

Pin assignment X2 (4-pole screw-plug connector, on the bottom side, at the back)

Pin No.	Name	Function
1	UB (Pwr)	10..33 V supply voltage / DC
2	0 V (Pwr)	0 V supply voltage / DC
3	n.c.	
4	n.c.	

9.2.3 PROFIBUS DP-connector

The plug (labeled: PROFIBUS) for the connection to PROFIBUS is available on the front side of the device.

Pin assignment (9-pole D-SUB, socket)

Pin No.	Name	Function
1	Shield	
2		
3	B	Not inverting input-/output-signal from PROFIBUS
4	CNTR-P	Control signal / repeater
5	M5	DGND-data reference potential
6	P5	5 V supply voltage
7		
8	A	Inverting input-/output-signal from PROFIBUS
9		



For the operation at a 485-interface the two pins labeled "485-" have to be connected together.
Also the two pins "485+".

9.2.4 Power supply

The device must be powered with 10-33 VDC, The voltage supply is made through the 4-pole screw-plug connector at the device's bottom side.

Please note that the devices of the series UNIGATE® should not be operated with AC voltage.

9.3 LEDs

The Gateway UNIGATE® MB - PROFIBUS features 9 LEDs with the following significance:

LED Power/State	green	Supply voltage serial interface
LEDs 1 / 2 / 4 / 8 (Error No. / Select ID)	green	Binary display of the Error number
LED State	red/green	Interface condition serial interface
LED Bus Power	green	Supply voltage PROFIBUS
LED Bus	red	PROFIBUS error
LED Bus State	red/green	Interface state PROFIBUS

9.3.1 LED "Power/State"

This LED is connected directly to the supply voltage of the serial interface (RS232/422/485).

9.3.2 LEDs 1 / 2 / 4 / 8 (Error No. / Select ID)

If these 4 LEDs flash and LED "State" simultaneously lights red, the error number is displayed in binary notation (conversion table, see Annex) in accordance with the table in chapter "Error handling".

9.3.3 LED "State"

Lights green	Data exchange activ via serial interface
Flashes green	RS-interface OK, but no constant data exchange
Flashes green/red	No data exchange since switching on
Lights red	General Gateway error (see LEDs Error No.)
Flashes red	UNIGATE® is in the configuration / test mode

9.3.4 LED "Bus Power"

This LED is connected directly to the electrically isolated supply voltage of the PROFIBUS-side.

9.3.5 LED "Bus"

This LED is directly controlled by the PROFIBUS ASIC and goes out in the state "DATA EXCHANGE".

9.3.6 LED "Bus State"

Lights green	PROFIBUS in the state data exchange
Flashes green	Gateway waits for PROFIBUS communication data
Flashes green/red	Gateway waits for PROFIBUS parameter data
Lights red	General PROFIBUS error

9.4 Switches

The Gateway features 7 switches with the following functions:

Termination Rx 422	switchable Rx 422-terminating resistor for the serial interface
Termination Tx 422	switchable Tx 422- or RS485-terminating resistor for the serial interface
Rotary coding switch S4	ID High for serial interface i. e. configmode
Rotary coding switch S5	ID Low for serial interface i. e. configmode
Termination (Profibus)	switchable PROFIBUS DP-terminating resistor
Rotary coding switch High	PROFIBUS-ID (high byte)
Rotary coding switch Low	PROFIBUS-ID (low byte)

9.4.1 Termination Rx 422 + Tx 422 (serial interface)

If the Gateway is operated as the physically first or last device in an RS485-bus or as 422, there must be a bus termination at this Gateway. In order to do this the termination switch is set to position ON. The resistor (150 Ω) integrated in the Gateway is activated. In all other cases, the switch remains in position OFF.

Please refer to the general RS485 literature for further information on the subject of bus terminations.

If the integrated resistor is used, please allow for the fact that this also activates a pull-down resistor (390 Ω) to ground and a pull-up resistor (390 Ω) to VCC.



**At RS48 only the Tx 422-switch must be set to ON.
The Rx 422-switch has to be on OFF.**

9.4.2 Rotary coding switches S4 + S5 (serial interface)

Via these two switches the RS485 -ID of the gateway is set to hexadecimal, as long as an ID is necessary for the bus. (A conversion table from decimal to hexadecimal can be found in the appendix.) This value is read in when the Gateway is switched on. The switch positions "EE" (testmode) and "FF" (config mode) are not possible for RS422- or RS485-operation.

Note: The switch position "DD" (ie, S4 and S5 in position "D") is reserved for internal purposes.

9.4.3 Termination (Profibus)

If the Gateway is operated as the first or last physical device in the PROFIBUS DP, there must be a bus termination at this Gateway. In order to do this, either a bus terminating resistor must be activated in the connector or the resistor (220 Ω) integrated in the Gateway must be activated. In order to do this, slide the slide switch to position ON. In all other cases, the slide switch must remain in position OFF. Please refer to the general PROFIBUS literature for further information on the subject of bus termination.

Note: To activate or deactivate the bus termination, please remove the bus-connector and carefully set the switch to the desired position.

9.4.4 Rotary coding switches High + Low (PROFIBUS-ID)

With these two switches the Gateway's Profibus-ID (00... 7D) is set in hexadecimal notation. Please refer to the Annex for a conversion table from decimal to hexadecimal. This value is read in only once when the Gateway is activated.

10 Error handling

10.1 Error handling at UNIGATE® MB

If the Gateway detects an error, the error is signalled by the “State“ LED lighting red and, simultaneously, the error number being indicated by means of LEDs “Error No.“ as shown in the table below. A distinction can be made between two error categories:

Serious errors (1-5): In this case, the Gateway must be switched off and switched back on again. If the error occurs again, the Gateway must be exchanged and returned for repair.

Warnings (6-15): These warnings are displayed for one minute simply for information purposes and are then automatically reset. If such warnings occur frequently, please inform After-Sales Service.

In the configuration mode these displays are not valid and only meant for internal use.

LED8	LED4	LED2	LED1	Error no. resp. ID	Error description
0	0	0	0	0	Reserved
0	0	0	1	1	Hardware fault
0	0	1	0	2	EEROM error
0	0	1	1	3	Internal memory error
0	1	0	0	4	Fieldbus hardware error or wrong Fieldbus-ID
0	1	0	1	5	Script error
0	1	1	0	6	Reserved
0	1	1	1	7	RS-transmit buffer overflow
1	0	0	0	8	RS-receive buffer overflow
1	0	0	1	9	RS timeout
1	0	1	0	10	General fieldbus error
1	0	1	1	11	Parity-or frame-check-error
1	1	0	0	12	Reserved
1	1	0	1	13	Fieldbus configuration error
1	1	1	0	14	Fieldbus data buffer overflow
1	1	1	1	15	Reserved

Table 1: Error handling at UNIGATE® MB - system errors.

Flashing frequency 2 times per second (system error)

LED8	LED4	LED2	LED1	Error-No.	Protocol	Error description
0	0	1	1	3	all Protocols	No Universal script support
0	1	0	1	5	all Protocols	Unknown Protocols
1	0	0	1	9	Modbus RTU Master Modbus ASCII Master	Timeout-Modbus Slave Participant didn't response in set time frame (response time).
					Modbus RTU Slave Universal Modbus RTU Slave	Timeout at Response-transmission
					3964(R)	Timeout - no response from Participant
1	0	1	1	11	Universal 232 (with 232 Checksum)	Checksum of reception does not match the calculated one.
					Modbus RTU Slave Universal Modbus RTU Slave	Unknown error after response transmission.
					3964(R)	Error at data exchange (e.g. Checksum error)
1	1	0	0	12	Universal Modbus RTU Master	Error in Response of Functioncode
1	1	0	0	12	SSI	Error at the SSI communication
1	1	1	1	15	Modbus RTU Master Modbus ASCII Master	General reception error at Modbus (ASCII) Exchange, e.g. Checksum error
1	1	1	0	14	Modbus RTU Slave	Exception Response
1	1	1	1	15	all Protocols	internal error at process data measurement

Table 2: Protocol based errors

Flashing frequency once per second (user-defined errors or protocol-related errors)

Note: The error is displayed as long as is defined with "Set Warning Time".

11 Installation guidelines

11.1 Installation of the module

The module with the dimensions 23 x 117 x 111 mm (W x D x H) has been developed for switch cabinet use (IP 20) and can thus be mounted only on a standard mounting channel (deep DIN-rail to EN 50022).

11.1.1 Mounting

- Engage the module from the top in the top-hat rail and swivel it down so that the module engages in position.
- Other modules may be rowed up to the left and right of the module.
- There must be at least 5 cm clearance for heat dissipation above and below the module.
- The standard mounting channel must be connected to the equipotential bonding strip of the switch cabinet. The connection wire must feature a cross-section of at least 10 mm².

11.1.2 Removal

- First disconnect the power supply and signal lines.
- Then push the module up and swivel it out of the top-hat rail.

Vertical installation

The standard mounting channel may also be mounted vertically so that the module is mounted turned through 90°.

11.2 Wiring

11.2.1 Connection systems

The following connection systems must resp. may be used when wiring the module:

- Standard screw-type/plug connection (power supply + RS)
- 9-pin D-SUB plug connector (PROFIBUS DP)

- a) In the case of standard screw-type terminals, one lead can be clamped per connection point. It is best to then use a screwdriver with a blade width of 3.5 mm to firmly tighten the screw.

Permitted cross-sections of the line:

- Flexible line with wire-end ferrule: 1 x 0.25 ... 1.5 mm²
- Solid conductor: 1 x 0.25 ... 1.5 mm²
- Tightening torque: 0.5 ... 0.8 Nm

- b) The plug-in connection terminal strip is a combination of standard screw-type terminal and plug connector. The plug connection section is coded and can thus not be plugged on the wrong way round.

- c) The 9-pin D-SUB plug connector is secured with two screws with "4-40-UNC" thread. It is best to use a screwdriver with a blade width of 3.5 mm to screw the screw tight.
Tightening torque: 0.2... 0.4 Nm

11.2.1.1 Power supply

The device must be powered with 10..33 V DC.

- Connect the supply voltage to the 4-pole plug-in screw terminal in accordance with the labelling on the device.

11.2.1.2 Equipotential bonding connection

The connection to the potential equalization automatically takes place if it is put on the DIN-rail.

11.2.2 PROFIBUS DP communication interface

11.2.2.1 Bus line with copper cable

This interface is located on the module in the form of a 9-pin D-SUB socket on the front side of the housing.

- Plug the PROFIBUS connector onto the SUB-D socket labelled "PROFIBUS DP".
- Firmly screw the securing screws of the plug connector tight using a screwdriver.
- If the module is located at the start or end of the PROFIBUS line, you must connect the bus terminating resistor integrated in the gateway. In order to do this, slide the slide switch to the position labelled ...on...
- If the module is not located at the start or at the end, you must set the slide switch to position "off".

11.2.3 Line routing, shield and measures to combat interference voltage

This chapter deals with line routing in the case of bus, signal and power supply lines, with the aim of ensuring an EMC-compliant design of your system.

11.2.4 General information on line routing

- Inside and outside of cabinets

In order to achieve EMC-compliant routing of the lines, it is advisable to split the lines into the following line groups and to lay these groups separately.

- ⇒ Group A:
 - shielded bus and data lines (e. g. for PROFIBUS DP, RS232C and printers etc.)
 - shielded analogue lines
 - unshielded lines for DC voltages ≥ 60 V
 - unshielded lines for AC voltage ≥ 25 V
 - coaxial lines for monitors
- ⇒ Group B:
 - unshielded lines for DC voltages ≥ 60 V and ≥ 400 V
 - unshielded lines for AC voltage ≥ 24 V and ≥ 400 V
- ⇒ Group C:
 - unshielded lines for DC voltages > 400 V

The table below allows you to read off the conditions for laying the line groups on the basis of the combination of the individual groups.

	Group A	Group B	Group C
Group A	1	2	3
Group B	2	1	3
Group C	3	3	1

Table 3: Line laying instructions as a function of the combination of line groups

- 1) Lines may be laid in common bunches or cable ducts.
- 2) Lines must be laid in separate bunches or cable ducts (without minimum clearance).
- 3) Lines must be laid in separate bunches or cable ducts inside cabinets but on separate cable racks with at least 10 cm clearance outside of cabinets but inside buildings.

11.2.4.1 Shielding of lines

Shielding is intended to weaken (attenuate) magnetic, electrical or electromagnetic interference fields.

Interference currents on cable shields are discharged to earth via the shielding bus which is connected conductively to the chassis or housing. A low-impedance connection to the PE wire is particularly important in order to prevent these interference currents themselves becoming an interference source.

Wherever possible, use only lines with braided shield. The coverage density of the shield should exceed 80%. Avoid lines with foil shield since the foil can be damaged very easily as the result of tensile and compressive stress on attachment. The consequence is a reduction in the shielding effect.

In general, you should always connect the shields of cables at both ends. The only way of achieving good interference suppression in the higher frequency band is by connecting the shields at both ends.

The shield may also be connected at one end only in exceptional cases. However, this then achieves only an attenuation of the lower frequencies. Connecting the shield at one end may be more favorable if

- it is not possible to lay an equipotential bonding line
- analogue signals (a few mV resp. mA) are to be transmitted
- foil shields (static shields) are used.

In the case of data lines for serial couplings, always use metallic or metallized plugs and connectors. Attach the shield of the data line to the plug or connector housing.

If there are potential differences between the earthing points, a compensating current may flow via the shield connected at both ends. In this case, you should lay an additional equipotential bonding line.

Please note the following points when shielding:

- Use metal cable clips to secure the shield braiding. The clips must surround the shield over a large area and must have good contact.
- Downstream of the entry point of the line into the cabinet, connect the shield to a shielding bus. Continue the shield as far as the module, but do not connect it again at this point!

12 PROFIBUS DP

12.1 Description of the DPV1-/DPV2-functions

12.1.1 DPV1

Die DPV1-Erweiterung besteht aus folgenden Funktionen:

1. Acyclic data exchange with Class1-Master (e. g.: PLC)

This function is optional for a DPV1-Slave. Our gateways support this function as a default. By means of this function the Class1-Master can read and write data from the slave acyclically. This data is processed by the script in the gateway. The channel for the acyclic data exchange is set up firmly during the parameterization.

2. Acyclic data exchange with Class2-Master (e. g.: control unit)

This option is optional for a DPV1-Slave as well. Our gateways support this function as a default. By means of this function the Class2-Master can read and write data from the slave acyclically. This data is processed by the script in the gateway. The channel for the acyclic data exchange is set up prior to every data exchange and closed again afterwards.

3. Alarm handling

Also the alarms are optional. If they are activated, they replace the device-specific diagnosis. At present our gateway does not support alarms.

Every DPV1-Slave must support the extended parameterization since it is determined in Octet 8 of the parameterization telegram whether it is a DPV0- or a DPV1-Slave.

A DPV1-Slave can also be operated at a DPV0-Master if the DPV1-functions remain turned off.

12.1.2 DPV2

Die DPV2-enlargement consists of the following functions:

1. Isochron Mode (IsoM)

It means the clock-synchronous behavior of a bus system. This function is optional for a DPV2-Slave and is activated via the device description file. At present our gateway does not support this mode.

2. Data Exchange Broadcast (DxB)

It means the communication between Slaves (inter-communication). This function is optional for a DPV2-Slave and is activated via the device description file. At present our gateway only supports the function of the „Publisher“ (sending data to other Slaves). The function „Subscriber“ (receiving data from other Slaves) is not supported at present.

3. Up- And Download

This function is also optional for a DPV2-Slave and at present it is not supported by our gateway.

4. Time-synchronization (Time stamp)

This function is also optional for a DPV2-Slave and at present it is not supported by our gateway.

5. Redundancy concept

This function is also optional for a DPV2-Slave and at present it is not supported by our gateway.

12.2 Representation of the data in PROFIBUS DP

Any standard-compliant PROFIBUS DP Master can exchange data with the gateway. It is also possible to use very "simple" Master connections owing to the data structure.

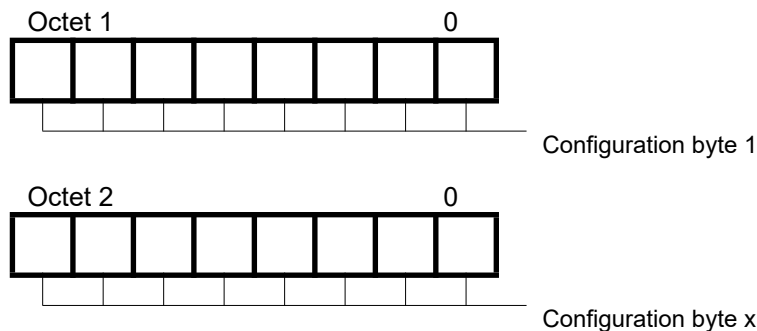
12.2.1 Configuration telegram

After programming, the Master must send a configuration telegram to the corresponding Slave. The configuration telegram provides the Slave with information on the length of the input/output data. If the user has set the 'Length byte' flag, this means the maximum data lengths. Otherwise, it means the actual lengths.

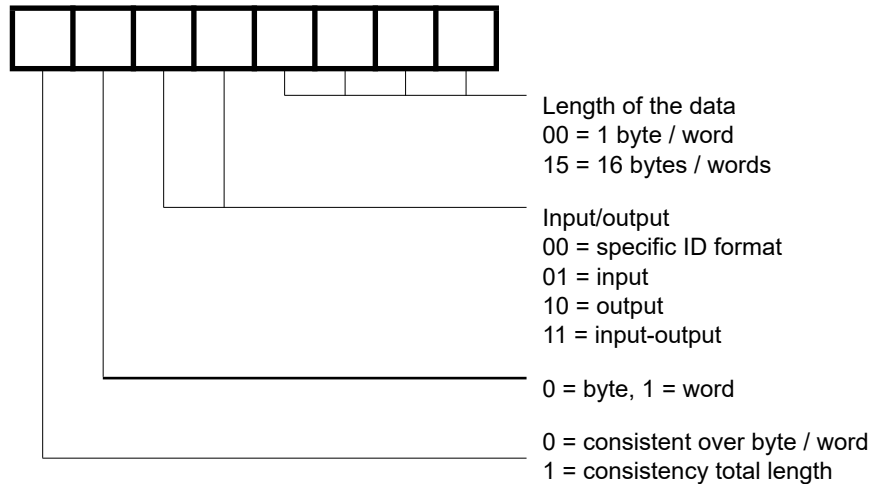
The user normally also configures the configuration telegram in the project planning tool where he may also, if necessary, enter the address range in which the useful data is stored.

You can write up to 16 bytes or words in one octet of the DataUnit (DU). Inputs and outputs having the same format can be combined in one octet. Otherwise, you must use as many octets as the number of different bytes/words you wish to use and which cannot be combined in one octet. If the module detects, during the check, that the maximum permitted input/output data lengths have been exceeded, it signals incorrect configuration to the Master during a subsequent diagnostic scan. It is then not ready for useful data communication.

12.2.2 Configuration telegram



Structure of an octet in the configuration telegram:



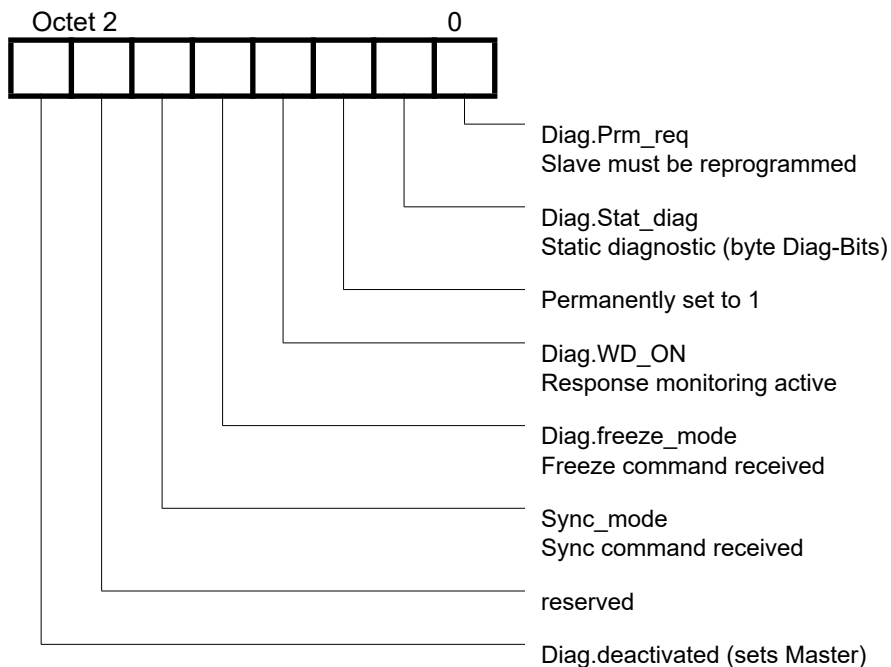
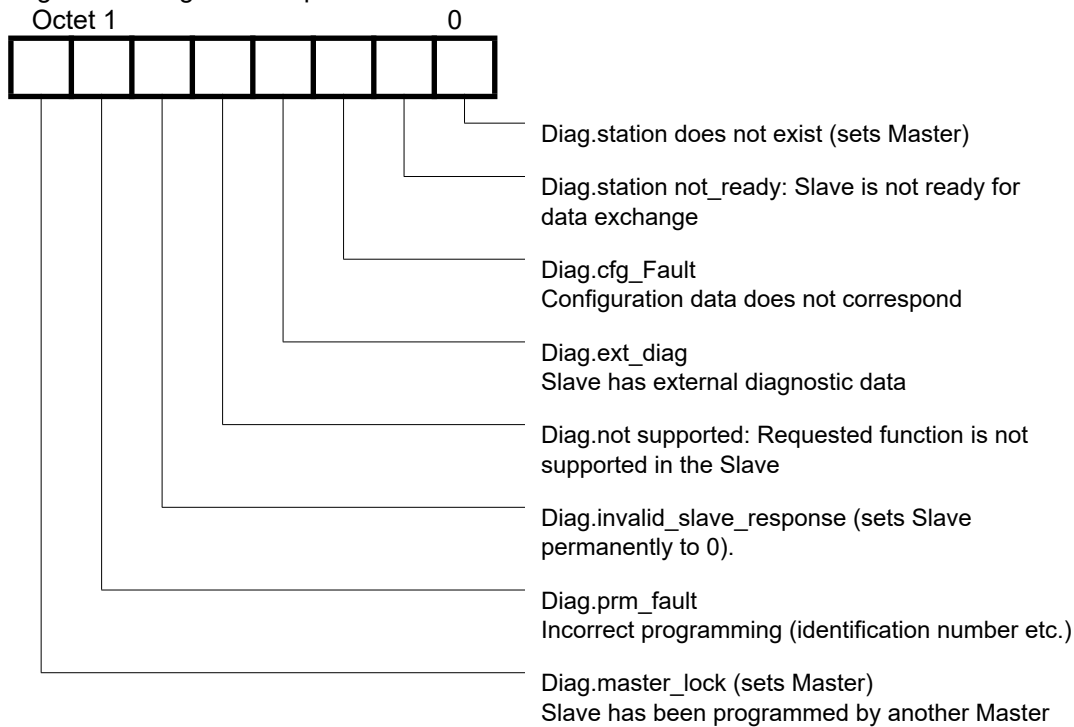
12.2.3 Diagnosis

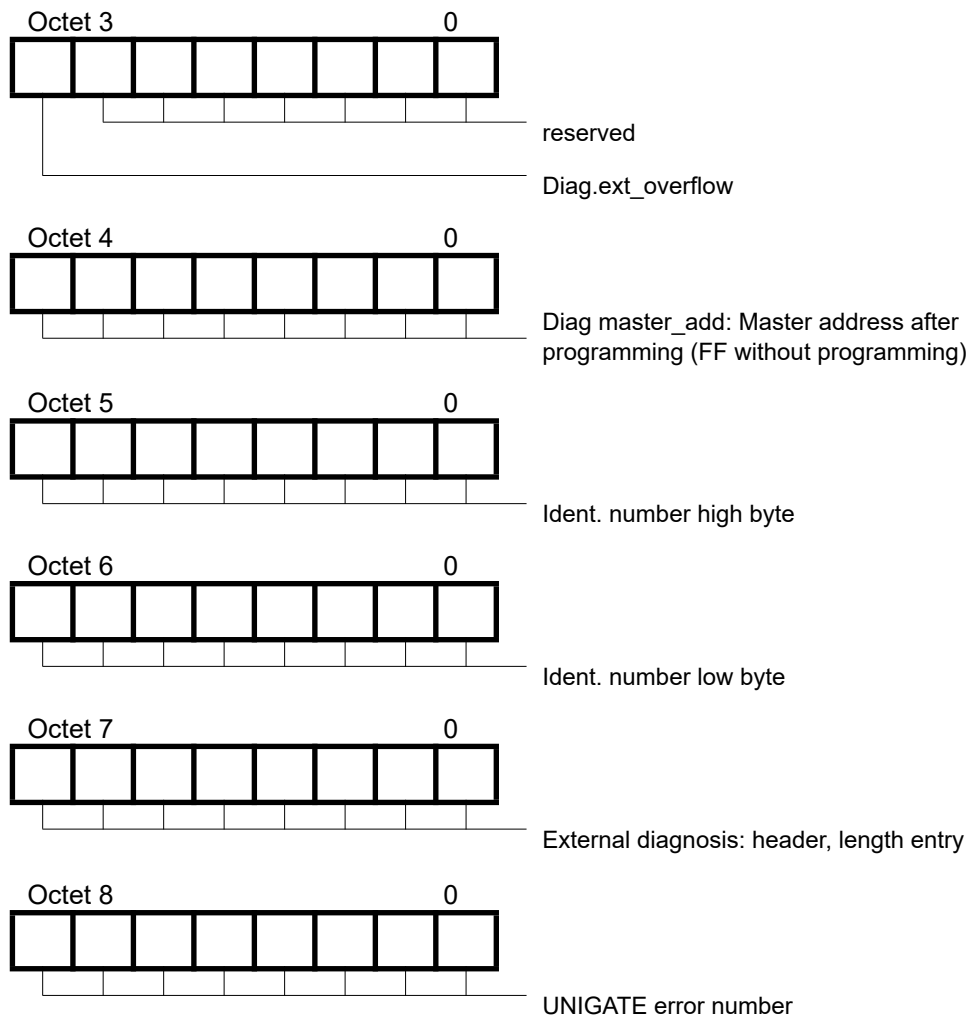
Diagnostic data is high-priority data. The gateway runs an external diagnostic if it detects an internal error.

Representation of the information in the external diagnostic byte:

The diagnostic information of a DP Slave consists of standard diagnostic information items (6 bytes) and a user-specific diagnostic information item. (Error number)

Telegram for diagnostic request:





12.2.3.1 Diagnosis in DPV1

The "external diagnosis" of DPV0 (old PB) is used differently at DPV1. At DPV1 the alarms and the status messages are transferred there. Since the gateway's error numbers have been transferred in the external diagnosis it became necessary then to carry out an adaptation at DPV1. Now the 3 bytes "0x81, 0x00, 0x00" have been inserted in front of the actual error message in order to be compatible with DPV1-masters. With it a DPV1-master identifies our gateway's error as status message now.

This results in a different representation of our gateway error in PROFIBUS. At DPV0 the error number is transmitted in unmodified form as 1 byte external diagnosis. In case DPV1 has been activated in the gateway through the device description file, the error number occurs as 1 byte status message.

Supposing the DPV1 is activated and a master (which does not support the alarms and status messages) is connected, then our gateway error number is presented as "external diagnosis" with 4 bytes (see above), at which point the 4th byte contains the error number and the preceding 3 bytes (0x81, 0x00, 0x00) can be ignored.

12.2.4 Data exchange

After the Master, in the diagnostic, detects that the Slave is ready for data exchange, it sends data exchange telegrams. Either the Master stores the data in the input/output direction in the address area specified during project planning or the control program must fetch or retrieve the data using specific function blocks.

13 Technical data

13.1 Device data

The technical data of the module is given in the table below.

No.	Parameter	Data	Explanations
1	Location	Switch cabinet	DIN-rail mounting
2	Enclosure	IP20	Protection against foreign bodies and water to IEC 529 (DIN 40050)
4	Service life	10 years	
5	Housing size	23 x 117 x 111 mm (screw-plug-connector included) 23 x 117 x 100 mm (screw-plug connector not included)	W x D x H
6	Installation position	Any	
7	Weight	123 g	
8	Operating temperature	-40°C ... +85°C	The negative temperatures are only valid for the usual conditions (not condensing)
9	Storage/transport temperature	-40°C ... +85°C	
10	Atmospheric pressure during operation during transport	795 hPa ... 1080 hPa 660 hPa ... 1080 hPa	
11	Installation altitude	2000 m 4000 m	Unrestricted Restricted - Ambient temperature ≤ 40°C
12	Relative humidity	Max. 80 %	No condensation, no corrosive atmosphere
14	External power supply	10...33 V DC	Standard power supply unit to DIN 19240
15	Current consumption at 24 VDC	Typ. 70 mA max 80 mA	At 10V. typ. 200 mA
16	Supply at the Profibus-interface	5 V DC / max. 50 mA	(Max. 50 mA at < 30°C ambient temperature)
17	Reverse voltage protection	Yes	But does not function!
18	Short-circuit protection	Yes	
19	Overload protection	Poly-switch	Thermal fuse
20	Undervoltage detection (USP)	≤ 9 V DC	
21	Emergency power supply	≥ 5 ms	Device fully operable

Table: Technical data of the module

13.1.1 Interface data

The table below lists the technical data of the interfaces and ports on the device. The data has been taken from the corresponding Standards.

No.	Interface designation Physical interface	PROFIBUS DP RS485	RS232-C RS232-C	RS485/RS422 RS485/RS422
1	Standard	EIA Standard	DIN 66020	EIA Standard
2	Transmission mode	Symmetrical asynchronous serial half-duplex → Difference signal	Asymmetrical asynchronous serial full duplex → Level	Symmetrical asynchronous serial half-duplex full duplex at RS422 → Difference signal
3	Transmission method	Master / Slave	Master / Slave	Master / Slave
4	Number of users : - Transmitters - Receiver	32 32	1 1	32 32
5	Cable length: - Maximum - Baud rate-dependent	1200 m 93.75 kBd → 1200 m 187.5 kBd → 1000 m 500 kBd → 400 m 1.5 MBd → 200 m >1.5 MBd → 100 m	15 m no	1200 m <93.75 kBd → 1200 m 312, kBd → 500 m 625 kBd → 250 m
6	Bus topology	Line	Point-to-point	Line
7	Data rate: - Maximum - Standard values	12 Mbit/s 9.6 kBit/s 19.2 kBit/s 93.75 kBit/s 187.5 kBit/s 500 kBit/s 1.5 Mbit/s 3 MBit/s 6 MBit/s 12 Mbit/s	120 kBit/s 2.4 k/B 4.8 k/B 9.6 kBit/s 19.2 kBit/s 38.4 kBit/s	625 kBaud 2.4 kBit/s 4.8 kBit/s 9.6 kBit/s 19.2 kBit/s 57.6 kB 312.5 kB 625 kB
8	Transmitter: - Load - Maximum voltage - Signal, unloaded - Signal, loaded	54 Ω - 7 V ... 12 V ± 5 V ± 1.5 V	3 ... 7 kΩ ± 25 V ± 15 V ± 5 V	54 Ω - 7 V ... 12 V ± 5 V ± 1.5 V
9	Receiver: - Input resistance - Max. input signal - Sensitivity	12 Ω - 7 V ... 12 V ± 0.2 V	3 ... 7 Ω ± 15 V ± 3 V	12 Ω - 7 V ... 12 V ± 0.2 V
10	Transmit range (SPACE): - Voltage level - Logic level	- 0.2 ... + 0.2 V 0	+ 3 ... + 15 V 0	- 0.2 ... + 0.2 V 0
11	Transmit pause (MARK): - Voltage level - Logic level	+ 1.5 ... +5 V 1	- 3 ... -15 V 1	+ 1.5 ... +5 V 1

Table: Technical data of the interfaces at the module

14 Commissioning guide

14.1 Note

Only trained personnel following the safety regulations may commission the UNIGATE®.

14.2 Components

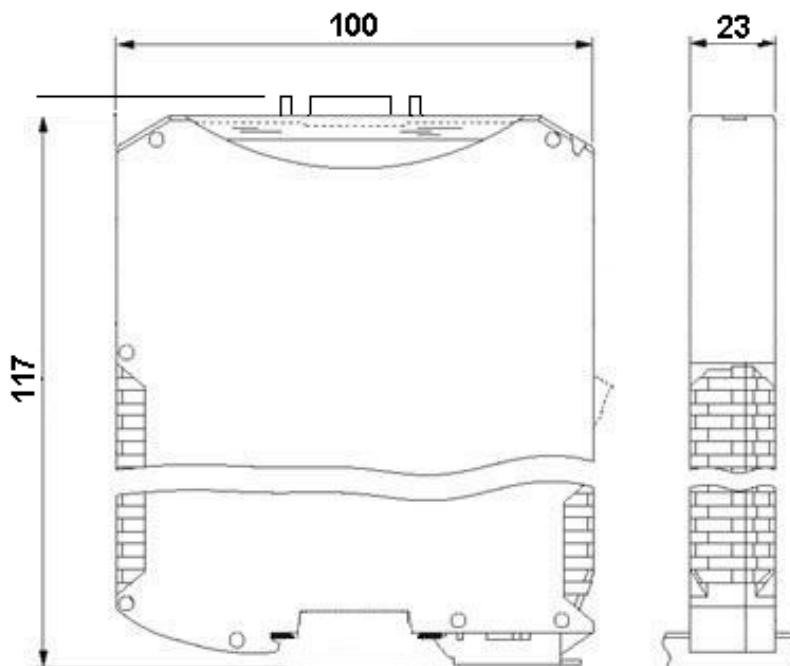
You will require the following components to commission the UNIGATE®:

- UNIGATE®
- Connection cable from gateway to the process
- Connector for Profibus connection to the Gateway
- PROFIBUS cable (this cable is generally already installed on site!)
- 10..33 V DC power supply (DIN 19240)
- Type file or device description file and user manual (a sample file as well as the user manual can be ordered separately or downloaded free of charge from our homepage at www.deutschmann.de).

14.3 Installation

The UNIGATE® MB - PROFIBUS DP module features protection type IP20 and is thus suitable for switch cabinet use. The device is designed for snapping onto a 35 mm DIN-rail.

14.4 Dimensional drawing UNIGATE® MB - PROFIBUS DP



14.5 Commissioning

It is essential that you perform the following steps during commissioning in order to ensure that the module operates correctly:

14.6 Setting the PROFIBUS address

Set the PROFIBUS address at the fieldbus end of the module on the two rotary switches designated "PROFIBUS-ID High" and "PROFIBUS-ID Low". This adjustment is carried out in a hexadecimal way.

Example:

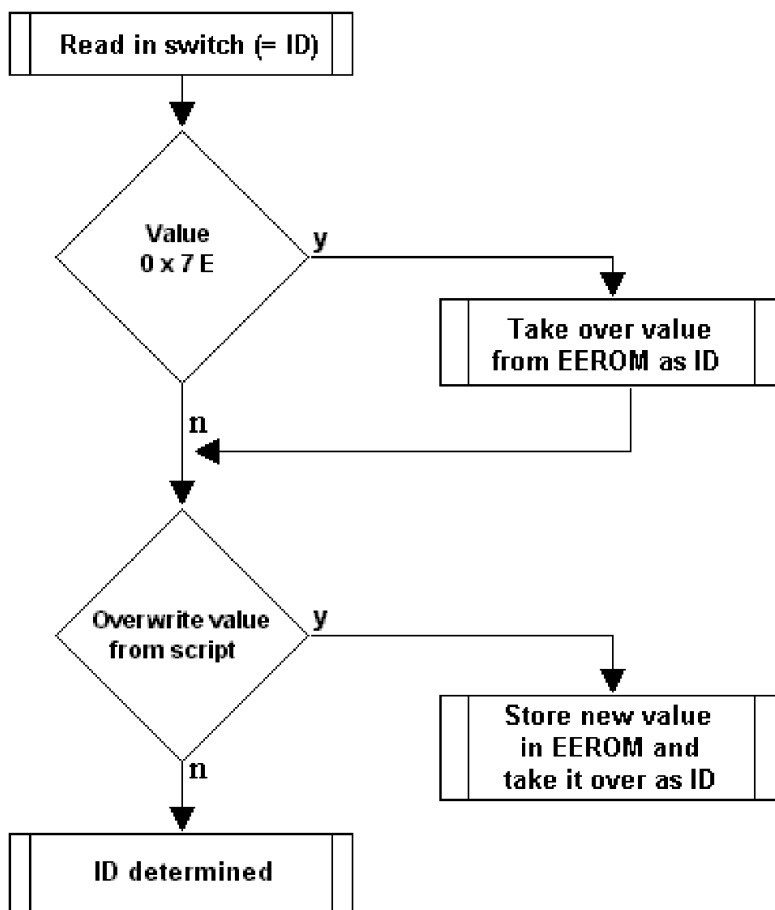
The PROFIBUS-ID is 26 decimal = 1A hexadecimal

The switch "PROFIBUS-ID High" has to be set to 1 and the switch "PROFIBUS-ID Low" has to be set to A.

If the rotary switch is set to "7E" (=126) on the PROFIBUS-side (PROFIBUS-ID), the gateway operates with a PROFIBUS-address, that is stored in the EEROM. In the state of delivery this address is set to 126 and can only be changed by a PROFIBUS-master via the PROFIBUS itself. The address 126 is reserved in the PROFIBUS for this purpose; that means that a slave with this address can never carry out a data exchange, but it can only be configured with a new ID.

In case the rotary switch is set to a value between 0...125, the gateway operates - with this PROFIBUS-ID and a change via the master is not possible.

Flow diagram



**Attention:**

The set PROFIBUS address must correspond with the planned address under COM PROFIBUS!

It is read in only on power-up of the gateway!

14.7 PROFIBUS connection

Connect the device to the Profibus at the interface labelled "PROFIBUS".

14.8 Connection to the process device

Please also read the manual for the process device when commissioning the process device.

14.9 Connecting the supply voltage

Please connect 10..33 DC voltage to the terminals provided for this.

14.10 Shield connection

Earth the top-hat rail onto which the module has been snapped.

14.11 Project planning

Use any project planning tool for project planning.

If the required device description file was not supplied with your project planning tool, a sample file can be found on the Internet (www.deutschmann.de).

14.12 Literature

We recommend that you read book "Schnelleinstieg in PROFIBUS DP", author M. Popp, to help you quickly get to grips with the subject of the PROFIBUS DP and the mode of operation of the available ASICs. The book can be ordered from the PROFIBUS User Organisation, Order No. 4.071. (German-language).

Address:
PROFIBUS Nutzerorganisation e.V.
Haid-und-Neu-Str. 7
D-76131 Karlsruhe
Germany
Tel: 0721 9658 590

15 Servicing

Should questions arise that are not covered in this manual you can find further information in our

- FAQ/Wiki area on our homepage www.deutschmann.com or directly in our Wiki on www.wiki.deutschmann.de

If your questions are still unanswered please contact us directly.

Please note down the following information before calling:

- Device designation
- Serial number (S/N)
- Article number
- Error number and error description

Your request will be recorded in the Support center and will be processed by our Support Team as quickly as possible (Usually in 1 working day, rarely more than 3 working days.).

Technical Support hours are as follows:

Monday to Thursday from 8 am to midday and from 1 pm to 4 pm, Friday from 8 am to midday (CET).

Deutschmann Automation GmbH & Co. KG
Carl-Zeiss-Straße 8
D-65520 Bad-Camberg
Germany

Central office and sales department +49 6434 9433-0
Technical Support +49 6434 9433-33

Fax sales department +49 6434 9433-40
Fax Technical Support +49 6434 9433-44

E-mail Technical Support support@deutschmann.de

15.1 Returning a device

If you return a device, we require as comprehensive a fault/error description as possible. We require the following information in particular:

- What error number was displayed?
- What is the supply voltage (± 0.5 V) with Gateway connected?
- What were you last doing or what last happened on the device (programming, error on power-up, ...)?

The more precise information a fault/error description you provide, the more exactly we will be able to pinpoint the possible causes.

15.2 Downloading PC software

You can download current information and software free of charge from our Internet server.
<http://www.deutschmann.com>

16 Annex

16.1 Explanations of the abbreviations

General

CL	=	Product group CL (Compact Line)
CM	=	Product group CM (CANopen Line)
CX	=	Product group CX
EL	=	Product group EL (Ethernet Line)
FC	=	Product group FC (Fast Connect)
GT	=	Galvanic separation RS-side
GY	=	Housing color gray
MB	=	Product group MB
RS	=	Product group RS
SC	=	Product group SC (Script)
232/485	=	Interface RS232 and RS485 switchable
232/422	=	Interface RS232 and RS422 switchable
DB	=	Additional RS232 DEBUG-interface
D9	=	Connection of the RS through 9-pin D-SUB instead of 5-pin screw-plug connector
PL	=	Board only without DIN-rail module and without housing cover
PD	=	Board only without DIN-rail module and with housing cover
AG	=	Gateway installed in a die-cast aluminum housing
EG	=	Gateway installed in a stainless steel housing
IC2	=	Product group IC2 (IC-design DIL32)
IC	=	Product group IC (IC-design DIL32)
IO8	=	Option I/O8
16	=	Script memory expanded to 16KB
5V	=	Operating voltage 5V
3,.3V	=	Operating voltage 3.3V

Fieldbus

CO	=	CANopen
C4	=	CANopen V4
C4X	=	CANopen V4-version X (see comparison table UNIGATE® IC for the respective product)
DN	=	DeviceNet
EC	=	EtherCAT
EI	=	Ethernet/IP
FE	=	Ethernet 10/100 MBit
FEX	=	Ethernet 10/100 MBit-version X (see comparison table UNIGATE® IC for the respective product)
IB	=	Interbus
IBL	=	Interbus
LN62	=	LONWorks62
LN512	=	LONWorks512
ModTCP	=	ModbusTCP
MPI	=	Siemens MPI®
PL	=	Powerlink
PN	=	Profinet-IO
PBDP	=	ProfibusDP

PBDPL = ProfibusDP-version L (see comparison table UNIGATE® IC for the respective product)
PBDPX = ProfibusDP-version X (see comparison table UNIGATE® IC for the respective product)
PBDPV0 = ProfibusDPV0
PBDPV1 = ProfibusDPV1
RS = Serial RS232/485/422

16.2 Hexadecimal table

Hex	Decimal	Binary
0	0	0000
1	1	0001
2	2	0010
3	3	0011
4	4	0100
5	5	0101
6	6	0110
7	7	0111
8	8	1000
9	9	1001
A	10	1010
B	11	1011
C	12	1100
D	13	1101
E	14	1110
F	15	1111

